

## TEST REPORT

CheckCode:885386  
Report No.:C202213016256E

**Applicant:** Lumi United Technology Co., Ltd  
**Address:** Room 801-804, Building 1, Chongwen Park, Nanshan iPark, No.3370, Liuxian Avenue, Fuguang Community, Taoyuan Residential District, Nanshan District, Shenzhen, China

**The following sample information was submitted and identified by/on the behalf of the client**

**Name:** Smart Pet Feeder C1  
**Specifications:** PETC1-M01  
**Sample State:** Normal

**Date of Receipt:** Jun.23, 2022  
Jul.15, 2022  
Aug.17, 2022  
**Test Period:** Jun.23, 2022 – Aug.23, 2022

**Test Request:** Two hundred and twenty-four (224) SVHC screening is performed according to Regulation (EC) No 1907/2006 concerning the REACH.

**Test Result:** Please refer to following page(s).

**Summary:**

According to the specified scope and evaluation screening, the test results of SVHC are > 0.1% (w/w) in the submitted sample. See B8, B10, B11.	See annex 2: obligations under REACH
--	--------------------------------------

Edited by Liany Qiu Xia Reviewed by Huang Yingkun Approved by Zheng Xiaojing



扫一扫 验真伪

Seal of:

GUANGZHOU GRG METROLOGY & TEST CO., LTD.

Issue date: Aug.23,2022

This test report is responsible for the tested samples only. Without permission of the test center this test report is not permitted to be duplicated in extracts. The test report is invalid without the specialized stamp of GUANGZHOU GRG METROLOGY & TEST CO., LTD. The test report is invalid if altered. Objections to the test report must be submitted to GUANGZHOU GRG METROLOGY & TEST CO., LTD. within 15 days.

**GUANGZHOU GRG METROLOGY & TEST CO., LTD.**

Address: No.31 Nanxiang Second Road, Science City, Huangpu District, Guangzhou, China  
Tel: 4006020999 Fax: +86-020-38698685 Website: <http://www.grgtest.com>

## TEST REPORT

CheckCode:885386  
Report No.:C202213016256E

## Material list:

No.	Sample Description
1	White plastic shell
2	White adhesive paper sheet with black printing ( On No.1 )
3	Translucent plastic shell ( On No.1 )
4	White plastic shell ( On No.3 )
5	Silvery metal screw ( On No.4 )
6	White plastic part ( On No.4 )
7	White rubber part ( On No.6 )
8	White plastic part ( On No.6 )
9	Silvery metal screw ( On No.6 )
10	White rubber part ( On No.6 )
11	White plastic cover ( On No.11 )
12	White plastic shell ( On No.11 )
13	Silvery metal spring ( In No.12 )
14	White plastic shell ( In No.11 )
15	Silvery metal screw ( On No.14 )
16	White plastic shell ( On No.11 )
17	White plastic part ( In No.3 )
18	Silvery metal shell ( On No.17 )
19	Dk-grey plastic part with white printing ( On No.1 )
20	Black plastic part with white printing ( On No.19 )
21	White plastic shell ( In No.1 )
22	Silvery metal screw ( On No.21 )
23	White plastic sheet ( On No.21 )
24	Silvery metal screw ( On No.21 )
25	Green "PCB" ( On No.19 )

## GUANGZHOU GRG METROLOGY &amp; TEST CO., LTD.

Address: No.31 Nanxiang Second Road, Science City, Huangpu District, Guangzhou, China  
Tel: 4006020999 Fax: +86-020-38698685 Website: <http://www.grgtest.com>

## TEST REPORT

CheckCode:885386  
Report No.:C202213016256E

No.	Sample Description
26	Black surfaced metal screw ( On No.25 )
27	Silvery & golden metal pin ( In No.72 )
28	Beige plastic shell ( On No.25 )
29	Silvery metal pin ( On No.28 )
30	Silvery metal sheet ( On No.28 )
31	Lt-brown body ( C21 ) ( On No.25 )
32	Black body ( R32 ) ( On No.25 )
33	Black body ( U6 ) ( On No.25 )
34	Brown body ( C18 ) ( On No.25 )
35	Silvery metal solder ( On No.25 )
36	White plastic part ( On No.25 )
37	Beige "LED" ( On No.36 )
38	Silvery metal pin ( On No.37 )
39	Black body ( D1 ) ( On No.25 )
40	Black body with white printing ( R37 ) ( On No.25 )
41	Black body ( K4 ) ( On No.25 )
42	Brown body ( C29 ) ( On No.25 )
43	Black body ( D2 ) ( On No.25 )
44	Black body ( U4 ) ( 5 feet ) ( On No.25 )
45	Lt-brown body ( C25 ) ( On No.25 )
46	Brown body ( C12 ) ( On No.25 )
47	Black body ( U2 ) ( On No.25 )
48	Black body ( U3 ) ( On No.25 )
49	Silvery metal shell ( On No.25 )
50	Black body ( On No.39 )
51	Silvery metal sheet ( In No.49 )

**GUANGZHOU GRG METROLOGY & TEST CO., LTD.**

Address: No.31 Nanxiang Second Road, Science City, Huangpu District, Guangzhou, China  
Tel: 4006020999 Fax: +86-020-38698685 Website: <http://www.grgtest.com>

## TEST REPORT

CheckCode:885386  
Report No.:C202213016256E

No.	Sample Description
52	Silvery metal pin
53	Silvery metal ring ( In No.49 )
54	Black plastic part
55	Silvery metal ring ( In No.49 )
56	Silvery metal shell
57	Blue "PCB" ( In No.49 )
58	Grey body ( On No.57 )
59	Black body ( On No.57 )
60	Silvery metal shell with black printing ( On No.25 )
61	Black plastic sheet ( On No.60 )
62	Black rubber part ( In No.60 )
63	Silvery metal terminal ( In No.60 )
64	Silvery metal pin ( On No.63 )
65	Silvery-grey metal foil ( In No.60 )
66	Beige paper sheet with liquid ( In No.60 )
67	Grey metal foil ( In No.60 )
68	Silvery metal shell ( On No.25 )
69	Golden metal button ( On No.68 )
70	Silvery metal sheet ( In No.68 )
71	White plastic part
72	Black plastic part ( In No.68 )
73	Silvery & golden metal sheet ( In No.72 )
74	Black "PCB" ( On No.25 )
75	Golden metal pin with solder
76	White body with white printing ( On No.74 )
77	Brown body ( On No.74 )

**GUANGZHOU GRG METROLOGY & TEST CO., LTD.**

Address: No.31 Nanxiang Second Road, Science City, Huangpu District, Guangzhou, China  
Tel: 4006020999 Fax: +86-020-38698685 Website: <http://www.grgtest.com>

## TEST REPORT

CheckCode:885386  
Report No.:C202213016256E

No.	Sample Description
78	Black body ( On No.74 )
79	Grey body ( On No.74 )
80	Silvery body ( On No.74 )
81	Brown body ( On No.74 )
82	Black body ( On No.74 )
83	Silvery metal solder ( On No.74 )
84	White plastic shell ( On No.1 )
85	Black adhesive rubber sheet ( On No.84 )
86	Silvery metal screw ( In No.84 )
87	White adhesive plastic sheet with black printing ( On No.84 )
88	White plastic cover ( On No.84 )
89	Translucent adhesive plastic sheet with black printing ( On No.84 )
90	Black adhesive foam sheet ( In No.84 )
91	Translucent adhesive plastic sheet with grey printing ( On No.84 )
92	Black glue ( On No.84 )
93	White plastic part ( On No.25 )
94	Silvery metal terminal ( In No.93 )
95	Red plastic jacket with black printing ( On No.93 )
96	Orange plastic jacket with black printing ( On No.93 )
97	Yellow plastic jacket with black printing ( On No.93 )
98	Blue plastic jacket ( On No.93 )
99	Grey plastic jacket with black printing ( On No.93 )
100	Brown plastic jacket with white printing ( On No.93 )
101	Black plastic jacket with white printing ( On No.93 )
102	White plastic jacket with black printing ( On No.93 )
103	Silvery metal wire ( In No.102 )

**GUANGZHOU GRG METROLOGY & TEST CO., LTD.**

Address: No.31 Nanxiang Second Road, Science City, Huangpu District, Guangzhou, China  
Tel: 4006020999 Fax: +86-020-38698685 Website: <http://www.grgtest.com>

## TEST REPORT

CheckCode:885386  
Report No.:C202213016256E

No.	Sample Description
104	Black plastic jacket with white printing ( On No.93 )
105	Black plastic heat shrinkable tube with Lt-blue printing ( On No.102 )
106	Black plastic shell ( In No.84 )
107	Silvery metal screw ( On No.106 )
108	Black plastic shell ( On No.106 )
109	Silvery metal part ( In No.106 )
110	Golden metal sheet ( In No.106 )
111	Grey metal spring ( In No.106 )
112	Silvery metal sheet ( In No.106 )
113	Golden metal contact dot ( On No.110 )
114	Silvery metal sheet ( In No.106 )
115	Black plastic part ( In No.106 )
116	Silvery metal sheet ( In No.106 )
117	Silvery metal solder ( On No.116 )
118	Copper-colored metal contact dot ( On No.116 )
119	Silvery metal shell ( In No.84 )
120	White plastic part ( On No.119 )
121	Silvery metal screw ( On No.119 )
122	Silvery metal cover ( On No.119 )
123	Grey surface metal gear ( On No.122 )
124	Silvery metal part ( On No.122 )
125	Silvery metal part ( On No.122 )
126	White plastic gear ( In No.119 )
127	Beige translucent oil ( On No.126 )
128	Silvery-grey metal gear ( In No.93 )
129	Silvery metal part ( In No.119 )

**GUANGZHOU GRG METROLOGY & TEST CO., LTD.**

Address: No.31 Nanxiang Second Road, Science City, Huangpu District, Guangzhou, China  
Tel: 4006020999 Fax: +86-020-38698685 Website: <http://www.grgtest.com>

## TEST REPORT

CheckCode:885386  
Report No.:C202213016256E

No.	Sample Description
130	Silvery metal rod ( In No.119 )
131	White plastic part
132	Silvery metal shell
133	Silvery metal screw ( On No.119 )
134	Silvery metal shell ( On No.119 )
135	Grey core ( In No.134 )
136	Silvery metal rod ( In No.134 )
137	Silvery metal silicon steel sheet ( On No.136 )
138	White plastic sheet ( On No.136 )
139	Copper-colored enameled wire ( On No.136 )
140	White plastic part
141	Copper-colored metal wire
142	Black plastic jacket
143	Copper-colored metal part ( On No.136 )
144	White plastic gear ( On No.136 )
145	White plastic part ( On No.136 )
146	Silvery & copper-colored metal sheet ( On No.145 )
147	Black core ( On No.146 )
148	White fiber thread
149	Beige plastic cover ( On No.134 )
150	Silvery metal sheet with solder ( On No.149 )
151	Silvery metal sheet ( On No.150 )
152	Red plastic jacket
153	Black plastic shell ( In No.84 )
154	Silvery metal part ( In No.153 )
155	Black plastic part ( On No.153 )

**GUANGZHOU GRG METROLOGY & TEST CO., LTD.**

Address: No.31 Nanxiang Second Road, Science City, Huangpu District, Guangzhou, China  
Tel: 4006020999 Fax: +86-020-38698685 Website: <http://www.grgtest.com>

## TEST REPORT

CheckCode:885386  
Report No.:C202213016256E

No.	Sample Description
156	Silvery metal sheet ( In No.153 )
157	Silvery metal rod ( In No.153 )
158	Silvery metal sheet ( In No.153 )
159	Silvery metal solder ( On No.158 )
160	Silvery metal screw ( On No.153 )
161	Silvery metal part ( In No.84 )
162	Silvery metal spring ( On No.161 )
163	Silvery metal sheet ( In No.84 )
164	Lt-blue surfaced metal shell ( In No.84 )
165	Black fiber sheet ( On No.164 )
166	Green "PCB" ( On No.164 )
167	Silvery metal solder ( On No.166 )
168	Black glue ( On No.166 )
169	Black plastic ring ( On No.164 )
170	Black plastic sheet ( On No.164 )
171	Copper-colored enameled wire ( On No.170 )
172	White rubber jacket
173	Silvery metal magnet ( In No.164 )
174	Silvery metal sheet ( In No.164 )
175	Dk-grey core
176	Brown body ( C31 )

**GUANGZHOU GRG METROLOGY & TEST CO., LTD.**

Address: No.31 Nanxiang Second Road, Science City, Huangpu District, Guangzhou, China  
Tel: 4006020999 Fax: +86-020-38698685 Website: <http://www.grgtest.com>



## TEST REPORT

CheckCode:885386  
Report No.:C202213016256E

Testing groups	Testing requirement	Composition
A1	72 Substances of Very High Concern(SVHC) testing	5+9+13+15+18+22+24+26+29+30
A2	72 Substances of Very High Concern(SVHC) testing	35+38+49+51+53+55+60+63+64+65
A3	72 Substances of Very High Concern(SVHC) testing	67+68+69+70+73+83+86+94+103+107
A4	72 Substances of Very High Concern(SVHC) testing	109+110+111+112+113+114+116+117+118+119
A5	72 Substances of Very High Concern(SVHC) testing	121+122+123+124+125+128+129+130+133
A6	72 Substances of Very High Concern(SVHC) testing	134+136+137+143+146+150+151+154
A7	72 Substances of Very High Concern(SVHC) testing	156+157+158+159+160+161+162+163+164
A8	72 Substances of Very High Concern(SVHC) testing	167+173+174+141+132+75+56+52+27
B1	224 Substances of Very High Concern(SVHC) testing	1+3+4+6+8+11+12+14+16+17
B2	224 Substances of Very High Concern(SVHC) testing	19+20+21+23+28+36+61
B3	224 Substances of Very High Concern(SVHC) testing	72+84+87+88+89+91+93+105
B4	224 Substances of Very High Concern(SVHC) testing	106+108+115+120+126+138
B5	224 Substances of Very High Concern(SVHC) testing	144+145+149+153+155+169+170+140+131
B6	224 Substances of Very High Concern(SVHC) testing	7+10+62+95+172+71+54
B7	224 Substances of Very High Concern(SVHC) testing	96+97+98+99+100+101+102+104+152+142
B8	224 Substances of Very High Concern(SVHC) testing	25+31+32+33+34+37+39+40+41+42
B9	224 Substances of Very High Concern(SVHC) testing	43+44+45+46+47+48+57+58+59+74
B10	224 Substances of Very High Concern(SVHC) testing	76+77+78+79+80+81+82+166+50
B11	224 Substances of Very High Concern(SVHC) testing	50+66+85+90+92+127+135
B12	224 Substances of Very High Concern(SVHC) testing	139+147+165+168+171+148
B13	224 Substances of Very High Concern(SVHC) testing	175+176

**GUANGZHOU GRG METROLOGY & TEST CO., LTD.**

Address: No.31 Nanxiang Second Road, Science City, Huangpu District, Guangzhou, China  
Tel: 4006020999 Fax: +86-020-38698685 Website: <http://www.grgtest.com>

## TEST REPORT

CheckCode:885386  
Report No.:C202213016256E

## Test Result(s):

Test Method: In-house method, GC-MS, GC-ECD/NCI-GC/MS, HPLC and UPLC-PDA-MS quantification of relevant SVHC (substances of very high concern) in material samples;  
ICP-OES-screening, AAS-screening after decomposition for determination of relevant SVHC.

Substance name	CAS No.	Reporting Limit (%)	Result (%)			
			A1	A2	A3	A4
Lead*	7439-92-1	0.005	0.008	0.021	0.044	0.017
Other tested SVHC	---	---	N.D.	N.D.	N.D.	N.D.

Substance name	CAS No.	Reporting Limit (%)	Result (%)			
			A5	A6	A7	A8
Lead*	7439-92-1	0.005	N.D.	0.006	0.028	0.042
Other tested SVHC	---	---	N.D.	N.D.	N.D.	N.D.

Substance name	CAS No.	Reporting Limit (%)	Result (%)			
			B1	B2	B3	B4
All tested SVHC	---	---	N.D.	N.D.	N.D.	N.D.

Substance name	CAS No.	Reporting Limit (%)	Result (%)			
			B5	B6	B7	B8
Lead*	7439-92-1	0.005	N.D.	N.D.	N.D.	2.599
N,N-dimethylformamide	68-12-2	0.030	N.D.	N.D.	N.D.	0.072
Decamethylcyclopentasiloxane (D5)	541-02-6	0.030	N.D.	0.036	N.D.	N.D.
Dodecamethylcyclohexasiloxane (D6)	540-97-6	0.030	N.D.	0.093	N.D.	N.D.
Other tested SVHC	---	---	N.D.	N.D.	N.D.	N.D.

## GUANGZHOU GRG METROLOGY &amp; TEST CO., LTD.

Address: No.31 Nanxiang Second Road, Science City, Huangpu District, Guangzhou, China  
Tel: 4006020999 Fax: +86-020-38698685 Website: <http://www.grgtest.com>

## TEST REPORT

CheckCode:885386  
Report No.:C202213016256E

Substance name	CAS No.	Reporting Limit (%)	Result (%)			
			B9	B10	B11	B12
Lead✳	7439-92-1	0.005	N.D.	4.633	N.D.	N.D.
Dodecamethylcyclohexasiloxane (D6)	540-97-6	0.030	N.D.	N.D.	0.043	N.D.
Tris(4-nonylphenyl, branched and linear) phosphite (TNPP) with ≥ 0.1% w/w of 4-nonylphenol, branched and linear (4-NP)	---	0.030	N.D.	N.D.	1.351	N.D.
4-Nonylphenol, branched and linear (substances with a linear and/or branched alkyl chain with a carbon number of 9 covalently bound in position 4 to phenol, covering also UVCB- and well-defined substances which include any of the individual isomers or a combination thereof)	---	0.030	N.D.	N.D.	0.431	0.055
4-Nonylphenol, branched and linear, ethoxylated (substances with a linear and/or branched alkyl chain with a carbon number of 9 covalently bound in position 4 to phenol, ethoxylated covering UVCB- and well-defined substances, polymers and homologues, which include any of the individual isomers and/or combinations thereof)	---	0.030	N.D.	N.D.	N.D.	0.070
Other tested SVHC	---	---	N.D.	N.D.	N.D.	N.D.

**GUANGZHOU GRG METROLOGY & TEST CO., LTD.**

Address: No.31 Nanxiang Second Road, Science City, Huangpu District, Guangzhou, China  
Tel: 4006020999 Fax: +86-020-38698685 Website: <http://www.grgtest.com>

## TEST REPORT

CheckCode:885386  
Report No.:C202213016256E

Substance name	CAS No.	Reporting Limit (%)	Result (%)
			B13
All tested SVHC	---	---	N.D.

- Remark:
- 1) The table above only shows detected substances, and substances that below Reporting Limit are not reported. Please refer to Annex 1 for the full list of tested SVHC.
  - 2) \*The substances are tested in term of its respective elements (e.g. As, Pb, Cr(VI) ,B).
  - 3) §The substance is proposed for the identification as target compound only where it contains Michler's ketone(CAS No.:90-94-8) or Michler's base(CAS No.:101-61-1) ≥0.1%(w/w).
  - 4) Anthracene are tested by Polycyclic and heterocyclic Aromatic Hydrocarbons.
  - 5) \*,※The analysis of these substances is conducted for metal components.
  - 6) "N.D." = Not Detected (Below Reporting Limit).
  - 7) Results shown are of the minimum weight of mixed samples.
  - 8) As the specimen 57, 61, 62, 66, 168 were insufficient, the test result(s) was /were based on sample resubmitted by 2022-07-15.
  - 9) The performed tests on selected parts of submitted sample(s).

## Annex 1 - Full list of tested SVHC:

No.	Substance name	CAS No.	Reporting Limit (%)
1	4,4'- Diaminodiphenylmethane (MDA)	101-77-9	0.030
2	5-tert-butyl-2,4,6-trinitro-m-xylene (Musk xylene)	81-15-2	0.030
3	Alkanes, C10-13, chloro (Short Chain Chlorinated Paraffins)	85535-84-8	0.030
4	Anthracene	120-12-7	0.030
5	Benzyl butyl phthalate (BBP)	85-68-7	0.030
6	Bis (2-ethylhexyl)phthalate (DEHP)	117-81-7	0.030
7	Bis(tributyltin) oxide (TBTO)	56-35-9	0.030
8	Cobalt dichloride*	7646-79-9	0.005
9	Diarsenic pentaoxide*	1303-28-2	0.005

## GUANGZHOU GRG METROLOGY &amp; TEST CO., LTD.

Address: No.31 Nanxiang Second Road, Science City, Huangpu District, Guangzhou, China  
Tel: 4006020999 Fax: +86-020-38698685 Website: <http://www.grgtest.com>

## TEST REPORT

CheckCode:885386  
Report No.:C202213016256E

No.	Substance name	CAS No.	Reporting Limit (%)
10	Diarsenic trioxide*	1327-53-3	0.005
11	Dibutyl phthalate (DBP)	84-74-2	0.030
12	Hexabromocyclododecane (HBCDD) and all major diastereoisomers identified( $\alpha$ -HBCDD, $\beta$ -HBCDD, $\gamma$ -HBCDD)	25637-99-4 3194-55-6 (134237-51-7, 134237-50-6, 134237-52-8)	0.030
13	Lead hydrogen arsenate*	7784-40-9	0.005
14	Sodium dichromate*	7789-12-0, 10588-01-9	0.005
15	Triethyl arsenate*	15606-95-8	0.005
16	2,4-dinitrotoluene	121-14-2	0.030
17	Acrylamide	79-06-1	0.030
18	Anthracene oil	90640-80-5	0.030
19	Anthracene oil, anthracene paste	90640-81-6	0.030
20	Anthracene oil, anthracene paste, anthracene fraction	91995-15-2	0.030
21	Anthracene oil, anthracene paste, distn. lights	91995-17-4	0.030
22	Anthracene oil, anthracene-low	90640-82-7	0.030
23	Diisobutyl phthalate	84-69-5	0.030
24	Lead chromate*	7758-97-6	0.010
25	Lead chromate molybdate sulphate red (C.I. Pigment Red 104) *	12656-85-8	0.010
26	Lead sulfochromate yellow (C.I. Pigment Yellow 34) *	1344-37-2	0.010
27	Pitch, coal tar, high-temp.	65996-93-2	0.030
28	Tris(2-chloroethyl) phosphate	115-96-8	0.030
29	Ammonium dichromate*	7789-09-5	0.010

**GUANGZHOU GRG METROLOGY & TEST CO., LTD.**

Address: No.31 Nanxiang Second Road, Science City, Huangpu District, Guangzhou, China  
Tel: 4006020999 Fax: +86-020-38698685 Website: <http://www.grgtest.com>

## TEST REPORT

CheckCode:885386  
Report No.:C202213016256E

No.	Substance name	CAS No.	Reporting Limit (%)
30	Boric acid*	10043-35-3, 11113-50-1	0.010
31	Disodium tetraborate, anhydrous*	12179-04-3, 1303-96-4, 1330-43-4	0.010
32	Potassium chromate*	7789-00-6	0.010
33	Potassium dichromate*	7778-50-9	0.010
34	Sodium chromate*	7775-11-3	0.010
35	Tetraboron disodium heptaoxide, hydrate*	12267-73-1	0.010
36	Trichloroethylene	79-01-6	0.030
37	2-ethoxyethanol	110-80-5	0.030
38	2-methoxyethanol	109-86-4	0.030
39	Chromic acid, Oligomers of chromic acid and dichromic acid, Dichromic acid*	7738-94-5, --- 13530-68-2	0.010
40	Chromium trioxide*	1333-82-0	0.010
41	Cobalt(II) carbonate*	513-79-1	0.010
42	Cobalt(II) diacetate*	71-48-7	0.010
43	Cobalt(II) dinitrate*	10141-05-6	0.010
44	Cobalt(II) sulphate*	10124-43-3	0.010
45	1,2,3-trichloropropane	96-18-4	0.030
46	1,2-Benzenedicarboxylic acid, di-C6-8-branched alkyl esters, C7-rich	71888-89-6	0.030
47	1,2-Benzenedicarboxylic acid, di-C7-11-branched and linear alkyl esters	68515-42-4	0.030
48	1-Methyl-2-pyrrolidone (NMP)	872-50-4	0.030
49	2-ethoxyethyl acetate	111-15-9	0.030
50	Hydrazine	302-01-2, 7803-57-8	0.030

**GUANGZHOU GRG METROLOGY & TEST CO., LTD.**

Address: No.31 Nanxiang Second Road, Science City, Huangpu District, Guangzhou, China  
Tel: 4006020999 Fax: +86-020-38698685 Website: <http://www.grgtest.com>

## TEST REPORT

CheckCode:885386  
Report No.:C202213016256E

No.	Substance name	CAS No.	Reporting Limit (%)
51	Strontium chromate*	7789-06-2	0.010
52	1,2-dichloroethane	107-06-2	0.030
53	2,2'-dichloro-4,4'-methylenedianiline	101-14-4	0.030
54	2-Methoxyaniline, o-Anisidine	90-04-0	0.030
55	4-(1,1,3,3-tetramethylbutyl)phenol	140-66-9	0.030
56	Aluminosilicate Refractory Ceramic Fibres*	---	0.010
57	Arsenic acid*	7778-39-4	0.010
58	Bis(2-methoxyethyl) ether	111-96-6	0.030
59	Bis(2-methoxyethyl) phthalate	117-82-8	0.030
60	Calcium arsenate*	7778-44-1	0.010
61	Dichromium tris(chromate) *	24613-89-6	0.010
62	Formaldehyde, oligomeric reaction products with aniline	25214-70-4	0.030
63	Lead diazide, Lead azide*	13424-46-9	0.010
64	Lead dipicrate*	6477-64-1	0.010
65	Lead styphnate*	15245-44-0	0.010
66	N,N-dimethylacetamide	127-19-5	0.030
67	Pentazinc chromate octahydroxide*	49663-84-5	0.010
68	Phenolphthalein	77-09-8	0.030
69	Potassium hydroxyoctaoxodizincatedichromate*	11103-86-9	0.010
70	Trilead diarsenate*	3687-31-8	0.010
71	Zirconia Aluminosilicate Refractory Ceramic Fibres*	---	0.010
72	[4-[[4-anilino-1-naphthyl][4-(dimethylamino)phenyl]methylene]cyclohexa-2,5-dien-1-ylidene] dimethylammonium chloride (C.I. Basic Blue 26)§	2580-56-5	0.030

**GUANGZHOU GRG METROLOGY & TEST CO., LTD.**

Address: No.31 Nanxiang Second Road, Science City, Huangpu District, Guangzhou, China  
Tel: 4006020999 Fax: +86-020-38698685 Website: <http://www.grgtest.com>

## TEST REPORT

CheckCode:885386  
Report No.:C202213016256E

No.	Substance name	CAS No.	Reporting Limit (%)
73	[4-[4,4'-bis(dimethylamino)benzhydrylidene]cyclohexa-2,5-dien-1-ylidene]dimethylammonium chloride (C.I. Basic Violet 3)§	548-62-9	0.030
74	1,2-bis(2-methoxyethoxy)ethane (TEGDME, triglyme)	112-49-2	0.030
75	1,2-dimethoxyethane, ethylene glycol dimethyl ether (EGDME)	110-71-4	0.030
76	4,4'-bis(dimethylamino)benzophenone (Michler's ketone)	90-94-8	0.030
77	4,4'-bis(dimethylamino)-4''-(methylamino)trityl alcohol§	561-41-1	0.030
78	Diboron trioxide*	1303-86-2	0.010
79	Formamide	75-12-7	0.030
80	Lead(II) bis(methanesulfonate) *	17570-76-2	0.010
81	N,N,N',N'-tetramethyl-4,4'-methylenedianiline (Michler's base)	101-61-1	0.030
82	1,3,5-Tris(oxiran-2-ylmethyl)-1,3,5-triazinane-2,4,6-trione (TGIC)	2451-62-9	0.030
83	$\alpha,\alpha$ -Bis[4-(dimethylamino)phenyl]-4(phenylamino)naphthalene-1-methanol (C.I. Solvent Blue 4)§	6786-83-0	0.030
84	1,3,5-tris[(2S and 2R)-2,3-epoxypropyl]-1,3,5-triazine-2,4,6-(1H,3H,5H)-trione ( $\beta$ -TGIC)	59653-74-6	0.030
85	[Phthalato(2-)]dioxotrilead*	69011-06-9	0.010
86	1,2-Benzenedicarboxylic acid, dipentyl ester, branched and linear	84777-06-0	0.030
87	1,2-diethoxyethane	629-14-1	0.030
88	1-bromopropane (n-propyl bromide)	106-94-5	0.030
89	3-ethyl-2-methyl-2-(3-methylbutyl)-1,3-oxazolidine	143860-04-2	0.030

**GUANGZHOU GRG METROLOGY & TEST CO., LTD.**

Address: No.31 Nanxiang Second Road, Science City, Huangpu District, Guangzhou, China  
Tel: 4006020999 Fax: +86-020-38698685 Website: <http://www.grgtest.com>



## TEST REPORT

CheckCode:885386  
Report No.:C202213016256E

No.	Substance name	CAS No.	Reporting Limit (%)
90	4-(1,1,3,3-tetramethylbutyl)phenol, ethoxylated (covering well-defined substances and UVCB substances, polymers and homologues)	---	0.030
91	4,4'-methylenedi-o-toluidine	838-88-0	0.030
92	4,4'-oxydianiline and its salts	101-80-4	0.030
93	4-aminoazobenzene	60-09-3	0.030
94	4-methyl-m-phenylenediamine (toluene-2,4-diamine)	95-80-7	0.030
95	4-Nonylphenol, branched and linear (substances with a linear and/or branched alkyl chain with a carbon number of 9 covalently bound in position 4 to phenol, covering also UVCB- and well-defined substances which include any of the individual isomers or a combination thereof)	---	0.030
96	6-methoxy-m-toluidine (p-cresidine)	120-71-8	0.030
97	Acetic acid, lead salt, basic*	51404-69-4	0.010
98	Biphenyl-4-ylamine	92-67-1	0.030
99	Bis(pentabromophenyl) ether (decabromodiphenyl ether) (DecaBDE)	1163-19-5	0.030
100	Cyclohexane-1,2-dicarboxylic anhydride, cis-cyclohexane-1,2-dicarboxylic anhydride, trans-cyclohexane-1,2-dicarboxylic anhydride	85-42-7, 13149-00-3, 14166-21-3	0.030
101	Diazene-1,2-dicarboxamide (C,C'-azodi(formamide)) (ADCA)	123-77-3	0.030
102	Dibutyltin dichloride (DBTC)	683-18-1	0.030
103	Diethyl sulphate	64-67-5	0.030
104	Diisopentyl phthalate	605-50-5	0.030
105	Dimethyl sulphate	77-78-1	0.030
106	Dinoseb (6-sec-butyl-2,4-dinitrophenol)	88-85-7	0.030
107	Dioxobis(stearato)trilead*	12578-12-0	0.010

**GUANGZHOU GRG METROLOGY & TEST CO., LTD.**

Address: No.31 Nanxiang Second Road, Science City, Huangpu District, Guangzhou, China  
Tel: 4006020999 Fax: +86-020-38698685 Website: <http://www.grgtest.com>

## TEST REPORT

CheckCode:885386  
Report No.:C202213016256E

No.	Substance name	CAS No.	Reporting Limit (%)
108	Fatty acids, C16-18, lead salts*	91031-62-8	0.010
109	Furan	110-00-9	0.030
110	Henicosaflluoroundecanoic acid	2058-94-8	0.030
111	Heptacosaflluorotetradecanoic acid	376-06-7	0.030
112	Hexahydromethylphthalic anhydride, Hexahydro-4-methylphthalic anhydride, Hexahydro-1-methylphthalic anhydride, Hexahydro-3-methylphthalic anhydride	25550-51-0, 19438-60-9, 48122-14-1, 57110-29-9	0.030
113	Lead bis(tetrafluoroborate) *	13814-96-5	0.010
114	Lead cyanamidate*	20837-86-9	0.010
115	Lead dinitrate*	10099-74-8	0.010
116	Lead monoxide (lead oxide) *	1317-36-8	0.010
117	Lead oxide sulfate*	12036-76-9	0.010
118	Orange lead (lead tetroxide) *	1314-41-6	0.010
119	Lead titanium trioxide*	12060-00-3	0.010
120	Lead titanium zirconium oxide*	12626-81-2	0.010
121	Methoxyacetic acid	625-45-6	0.030
122	Methyloxirane (Propylene oxide)	75-56-9	0.030
123	N,N-dimethylformamide	68-12-2	0.030
124	N-methylacetamide	79-16-3	0.030
125	N-pentyl-isopentylphthalate	776297-69-9	0.030
126	o-aminoazotoluene	97-56-3	0.030
127	o-toluidine	95-53-4	0.030
128	Pentacosaflluorotridecanoic acid	72629-94-8	0.030
129	Pentalead tetraoxide sulphate*	12065-90-6	0.010
130	Pyrochlore, antimony lead yellow*	8012-00-8	0.010
131	Silicic acid, barium salt, lead-doped*	68784-75-8	0.010

**GUANGZHOU GRG METROLOGY & TEST CO., LTD.**

Address: No.31 Nanxiang Second Road, Science City, Huangpu District, Guangzhou, China  
Tel: 4006020999 Fax: +86-020-38698685 Website: <http://www.grgtest.com>

## TEST REPORT

CheckCode:885386  
Report No.:C202213016256E

No.	Substance name	CAS No.	Reporting Limit (%)
132	Silicic acid, lead salt*	11120-22-2	0.010
133	Sulfurous acid, lead salt, dibasic*	62229-08-7	0.010
134	Tetraethyllead*	78-00-2	0.010
135	Tetralead trioxide sulphate*	12202-17-4	0.010
136	Tricosafuorododecanoic acid	307-55-1	0.030
137	Trilead bis(carbonate) dihydroxide*	1319-46-6	0.010
138	Trilead dioxide phosphonate*	12141-20-7	0.010
139	4-Nonylphenol, branched and linear, ethoxylated (substances with a linear and/or branched alkyl chain with a carbon number of 9 covalently bound in position 4 to phenol, ethoxylated covering UVCB- and well-defined substances, polymers and homologues, which include any of the individual isomers and/or combinations thereof)	---	0.030
140	Ammonium pentadecafluorooctanoate (APFO)	3825-26-1	0.030
141	Cadmium oxide*	1306-19-0	0.010
142	Cadmium※	7440-43-9	0.010
143	Dipentyl phthalate (DPP)	131-18-0	0.030
144	Pentadecafluorooctanoic acid (PFOA)	335-67-1	0.030
145	Cadmium sulphide*	1306-23-6	0.010
146	Dihexyl phthalate	84-75-3	0.030
147	Disodium 3,3'-[[1,1'-biphenyl]-4,4'-diylbis(azo)]bis(4-aminonaphthalene-1-sulphonate) (C.I. Direct Red 28)	573-58-0	0.030

**GUANGZHOU GRG METROLOGY & TEST CO., LTD.**

Address: No.31 Nanxiang Second Road, Science City, Huangpu District, Guangzhou, China  
Tel: 4006020999 Fax: +86-020-38698685 Website: <http://www.grgtest.com>

## TEST REPORT

CheckCode:885386  
Report No.:C202213016256E

No.	Substance name	CAS No.	Reporting Limit (%)
148	Disodium 4-amino-3-[[4'-[(2,4-diaminophenyl)azo][1,1'- biphenyl]-4-yl]azo] -5-hydroxy-6-(phenylazo)naphthalene-2,7-dis ulphonate (C.I. Direct Black 38)	1937-37-7	0.030
149	Imidazolidine-2-thione (2-imidazoline-2-thiol)	96-45-7	0.030
150	Lead di(acetate) *	301-04-2	0.010
151	Trixylyl phosphate	25155-23-1	0.030
152	1,2-Benzenedicarboxylic acid, dihexyl ester, branched and linear	68515-50-4	0.030
153	Cadmium chloride*	10108-64-2	0.010
154	Sodium perborate, perboric acid, sodium salt*	---	0.010
155	Sodium peroxometaborate*	7632-04-4	0.010
156	2-(2H-benzotriazol-2-yl)-4,6-ditertpentylphen ol (UV-328)	25973-55-1	0.030
157	2-benzotriazol-2-yl-4,6-di-tert-butylphenol (UV-320)	3846-71-7	0.030
158	2-ethylhexyl 10-ethyl-4,4-dioctyl-7-oxo-8-oxa-3,5-dithia-4- stannatetradecanoate (DOTE)	15571-58-1	0.030
159	Reaction mass of 2-ethylhexyl 10-ethyl-4,4-dioctyl-7-oxo-8-oxa-3,5-dithia-4- stannatetradecanoate and 2-ethylhexyl 10-ethyl-4-[[2-[(2-ethylhexyl)oxy]-2-oxoethyl]t hio]-4-octyl-7-oxo-8-oxa-3,5-dithia-4-stannat etradecanoate (reaction mass of DOTE and MOTE)	---	0.030
160	Cadmium fluoride*	7790-79-6	0.010
161	Cadmium sulphate*	10124-36-4, 31119-53-6	0.010

## GUANGZHOU GRG METROLOGY &amp; TEST CO., LTD.

Address: No.31 Nanxiang Second Road, Science City, Huangpu District, Guangzhou, China  
Tel: 4006020999 Fax: +86-020-38698685 Website: <http://www.grgtest.com>

## TEST REPORT

CheckCode:885386  
Report No.:C202213016256E

No.	Substance name	CAS No.	Reporting Limit (%)
162	1,2-benzenedicarboxylic acid, di-C6-10-alkyl esters, 1,2-benzenedicarboxylic acid,mixed decyl and hexyl and octyl diesters (with ≥ 0.3% of dihexyl phthalate)	68515-51-5, 68648-93-1	0.030
163	5-sec-butyl-2-(2,4-dimethylcyclohex-3-en-1-yl)-5-methyl-1,3-dioxane [1], 5-sec-butyl-2-(4,6-dimethylcyclohex-3-en-1-yl)-5-methyl-1,3-dioxane [2] [covering any of the individual stereoisomers of [1] and [2] or any combination thereof]	---	0.030
164	1,3-propanesultone	1120-71-4	0.030
165	2,4-di-tert-butyl-6-(5-chlorobenzotriazol-2-yl)phenol (UV-327)	3864-99-1	0.030
166	2-(2H-benzotriazol-2-yl)-4-(tert-butyl)-6-(sec-butyl)phenol (UV-350)	36437-37-3	0.030
167	Nitrobenzene	98-95-3	0.030
168	Perfluorononan-1-oic-acid and its sodium and ammonium salts	375-95-1, 21049-39-8, 4149-60-4	0.030
169	Benzo[def]chrysene (Benzo[a]pyrene)	50-32-8	0.030
170	4,4'-isopropylidenediphenol (bisphenol A)	80-05-7	0.030
171	4-heptylphenol, branched and linear	---	0.030
172	Nonadecafluorodecanoic acid (PFDA) and its sodium and ammonium salts	3108-42-7, 335-76-2, 3830-45-3	0.030
173	P-(1,1-dimethylpropyl)phenol	80-46-6	0.030
174	Perfluorohexane-1-sulfonic acid and its salts (PFHxS)	---	0.030
175	1,6,7,8,9,14,15,16,17,17,18,18-Dodecachloro-pentacyclo[12.2.1.16,9.0.2,13.0.5,10]octadeca-7,15-diene ("Dechlorane Plus"™) [covering any of its individual anti- and syn-isomers or any combination thereof]	---	0.030

**GUANGZHOU GRG METROLOGY & TEST CO., LTD.**

Address: No.31 Nanxiang Second Road, Science City, Huangpu District, Guangzhou, China  
Tel: 4006020999 Fax: +86-020-38698685 Website: <http://www.grgtest.com>

## TEST REPORT

CheckCode:885386  
Report No.:C202213016256E

No.	Substance name	CAS No.	Reporting Limit (%)
176	Benz[a]anthracene	56-55-3, 1718-53-2	0.030
177	Cadmium nitrate*	10022-68-1, 10325-94-7	0.010
178	Cadmium carbonate *	513-78-0	0.010
179	Cadmium hydroxide*	21041-95-2	0.010
180	Chrysene	218-01-9, 1719-03-5	0.030
181	Reaction products of 1,3,4-thiadiazolidine-2,5-dithione, formaldehyde and 4-heptylphenol, branched and linear (RP-HP) [with ≥0.1% w/w 4-heptylphenol, branched and linear]	---	0.030
182	Benzene-1,2,4-tricarboxylic acid 1,2 anhydride (trimellitic anhydride) (TMA)	552-30-7	0.030
183	Dicyclohexyl phthalate (DCHP)	84-61-7	0.030
184	Benzo[ghi]perylene	191-24-2	0.030
185	Decamethylcyclotetrasiloxane (D5)	541-02-6	0.030
186	Disodium octaborate*	12008-41-2	0.010
187	Dodecamethylcyclohexasiloxane(D6)	540-97-6	0.030
188	Ethylenediamine	107-15-3	0.030
189	Lead※	7439-92-1	0.005
190	Octamethylcyclotetrasiloxane (D4)	556-67-2	0.030
191	Terphenyl hydrogenated	61788-32-7	0.030
192	2,2-bis(4'-hydroxyphenyl)-4-methylpentane	6807-17-6	0.030
193	Benzo[k]fluoranthene	207-08-9	0.030
194	Fluoranthene	206-44-0	0.030
195	Phenanthrene	85-01-8	0.030
196	Pyrene	129-00-0	0.030

**GUANGZHOU GRG METROLOGY & TEST CO., LTD.**

Address: No.31 Nanxiang Second Road, Science City, Huangpu District, Guangzhou, China  
Tel: 4006020999 Fax: +86-020-38698685 Website: <http://www.grgtest.com>

## TEST REPORT

CheckCode:885386  
Report No.:C202213016256E

No.	Substance name	CAS No.	Reporting Limit (%)
197	1,7,7-trimethyl-3-(phenylmethylene)bicyclo[2.2.1]heptan-2-one	15087-24-8	0.030
198	Tris(4-nonylphenyl, branched and linear) phosphite (TNPP) with $\geq 0.1\%$ w/w of 4-nonylphenol, branched and linear (4-NP)	---	0.030
199	4-tert-butylphenol	98-54-4	0.030
200	2-methoxyethyl acetate	110-49-6	0.030
201	2,3,3,3-tetrafluoro-2-(heptafluoropropoxy)propionic acid, its salts and its acyl halides (covering any of their individual isomers and combinations thereof)	---	0.030
202	2-benzyl-2-dimethylamino-4'-morpholinobutyrophenone	119313-12-1	0.030
203	2-methyl-1-(4-methylthiophenyl)-2-morpholinopropan-1-one	71868-10-5	0.030
204	Diisohexyl phthalate	71850-09-4	0.030
205	Perfluorobutane sulfonic acid (PFBS) and its salts	---	0.030
206	1-vinylimidazole	1072-63-5	0.030
207	2-methylimidazole	693-98-1	0.030
208	Dibutylbis(pentane-2,4-dionato-O,O')tin	22673-19-4	0.030
209	Butyl 4-hydroxybenzoate(Butylparaben)	94-26-8	0.030
210	Bis(2-(2-methoxyethoxy)ethyl)ether	143-24-8	0.030
211	Dioctyltin dilaurate, stannane, dioctyl-, bis(coco acyloxy) derivs., and any other stannane, dioctyl-, bis(fatty acyloxy) derivs. wherein C12 is the predominant carbon number of the fatty acyloxy moiety	---	0.030
212	1,4-dioxane	123-91-1	0.030
213	2,2-bis(bromomethyl)propane-1,3-diol (BMP); 2,2-dimethylpropan-1-ol, tribromo derivative/3-bromo-2,2-bis(bromomethyl)-1-propanol (TBNPA); 2,3-dibromo-1-propanol (2,3-DBPA)	3296-90-0, 36483-57-5 1522-92-5, 96-13-9	0.030

## GUANGZHOU GRG METROLOGY &amp; TEST CO., LTD.

Address: No.31 Nanxiang Second Road, Science City, Huangpu District, Guangzhou, China  
Tel: 4006020999 Fax: +86-020-38698685 Website: <http://www.grgtest.com>

## TEST REPORT

CheckCode:885386  
Report No.:C202213016256E

No.	Substance name	CAS No.	Reporting Limit (%)
214	2-(4-tert-butylbenzyl)propionaldehyde and its individual stereoisomers	---	0.030
215	4,4'-(1-methylpropylidene)bisphenol	77-40-7	0.030
216	Glutaral	111-30-8	0.030
217	Medium-chain chlorinated paraffins (MCCP) [UVCB substances consisting of more than or equal to 80% linear chloroalkanes with carbon chain lengths within the range from C14 to C17]	---	0.030
218	Orthoboric acid, sodium salt*	---	0.010
219	Phenol, alkylation products (mainly in para position) with C12-rich branched or linear alkyl chains from oligomerisation, covering any individual isomers and/ or combinations thereof (PDDP)	---	0.030
220	(±)-1,7,7-trimethyl-3-[(4-methylphenyl)methylene]bicyclo[2.2.1]heptan-2-one covering any of the individual isomers and/or combinations thereof (4-MBC)	---	0.030
221	6,6'-di-tert-butyl-2,2'-methylenedi-p-cresol	119-47-1	0.030
222	S-(tricyclo[5.2.1.0'2,6]deca-3-en-8(or 9)-yl) O-(isopropyl or isobutyl or 2-ethylhexyl) O-(isopropyl or isobutyl or 2-ethylhexyl) phosphorodithioate	255881-94-8	0.030
223	Tris(2-methoxyethoxy)vinylsilane	1067-53-4	0.030
224	N-(hydroxymethyl)acrylamide	924-42-5	0.030

**Annex 2 - REACH obligation:**

## 1. Concerning article(s):

Communication:

Article 33 of Regulation (EC) No 1907/2006 requires supplier of an article containing a substance meeting the criteria in Article 57 and identified in accordance with Article 59(1) in a concentration above

**GUANGZHOU GRG METROLOGY & TEST CO., LTD.**

Address: No.31 Nanxiang Second Road, Science City, Huangpu District, Guangzhou, China  
Tel: 4006020999 Fax: +86-020-38698685 Website: <http://www.grgtest.com>



# TEST REPORT

CheckCode:885386  
Report No.:C202213016256E

0.1% weight by weight (w/w) shall provide the recipient of the article with sufficient information, available to the supplier, to allow safe use of the article including, as a minimum, the name of that substance in the Candidate List.

## Notification:

In accordance with Regulation (EC) No 1907/2006, any EU producer or importer of articles shall notify ECHA, in accordance with paragraph 4 of Article 7, if a substance meets the criteria in Article 57 and is identified in accordance with Article 59(1) of the Regulation, if (a) the substance in the Candidate List is present in those articles in quantities totaling over one tonne per producer or importer per year; and (b) the substance in the Candidate List is present in those articles above a concentration of 0.1% weight by weight (w/w).

## 2. Concerning material(s):

Test results in this report are based on the tested sample. This report refers to testing result of tested sample submitted as homogenous material(s). In case such material is being used to compose an article, the results indicated in this report may not represent SVHC concentration in such article. If this report refers to testing result of composite material group by equal weight proportion, the material in each composite test group may come from more than one article.

If the sample is a substance or mixture, and it directly exports to EU, client has the obligation to comply with the supply chain communication obligation under Article 31 of Regulation (EC) No. 1907/2006 and the conditions of Authorization of substance of very high concern included in the Annex XIV of the Regulation (EC) No. 1907/2006.

## 3. Concerning substance and preparation:

If a SVHC is found over 0.1% (w/w) and/or the specific concentration limit which is set in Regulation (EC) No 1272/2008 and its amendments, client is suggested to prepare a Safety Data Sheet (SDS) against the SVHC to comply with the supply chain communication obligation under Regulation (EC) No 1907/2006, in which:

- a substance that is classified as hazardous under the CLP Regulation (EC) No 1272/2008.
- a mixture that is classified as hazardous under the CLP Regulation (EC) No 1272/2008, when it contains a substance with concentration equal to, or greater than the classification limit as set in Regulation (EC) No. 1272/2008; or
- a mixture is not classified as hazardous under the CLP Regulation (EC) No 1272/2008, but contains either:

(a) a substance posing human health or environmental hazards in an individual concentration of  $\geq 1\%$  by weight for mixtures that are solid or liquids (i.e., non-gaseous mixtures) or  $\geq 0.2\%$  by volume for gaseous mixtures; or

## GUANGZHOU GRG METROLOGY & TEST CO., LTD.

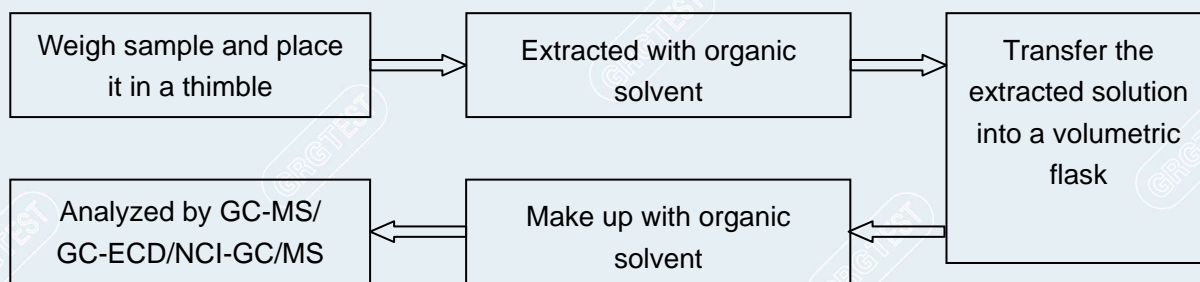
Address: No.31 Nanxiang Second Road, Science City, Huangpu District, Guangzhou, China  
Tel: 4006020999 Fax: +86-020-38698685 Website: <http://www.grgtest.com>

# TEST REPORT

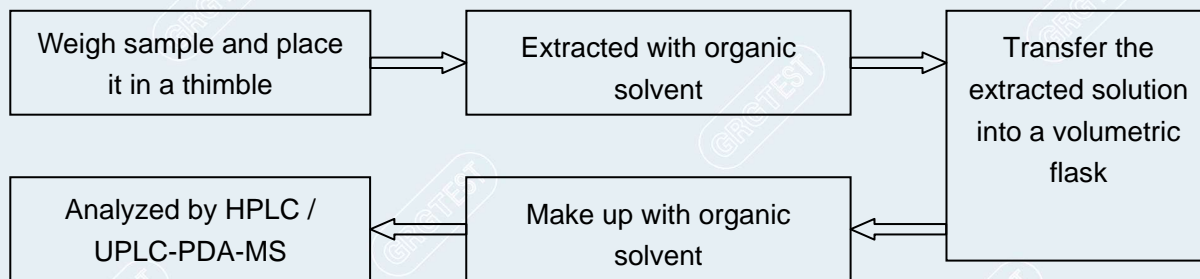
CheckCode:885386  
Report No.:C202213016256E

- (b) a substance that is PBT, or vPvB in an individual concentration of  $\geq 0.1$  % by weight for mixtures that are solid or liquids (i.e., non-gaseous mixtures); or
- (c) a substance on the SVHC candidate list (for reasons other than those listed above), in an individual concentration of  $\geq 0.1$  % by weight for non-gaseous mixtures; or
- (d) a substance for which there are Europe-wide workplace exposure limits.

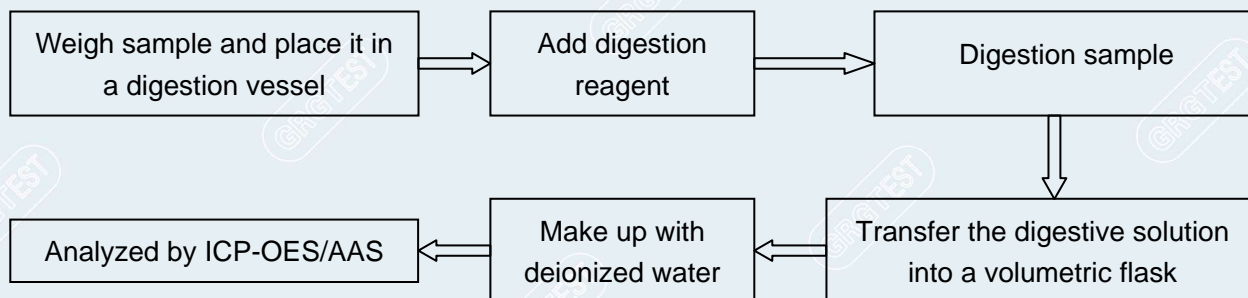
## Test Process (1):



## Test Process (2):



## Test Process (3):



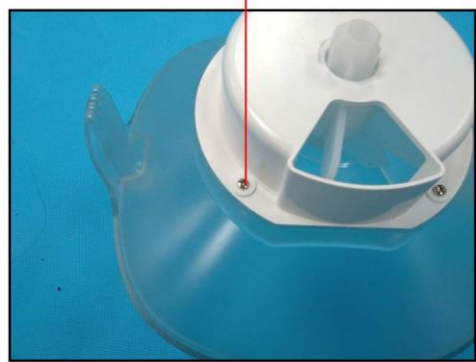
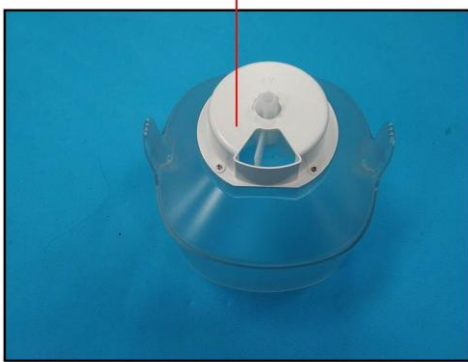
## GUANGZHOU GRG METROLOGY & TEST CO., LTD.

Address: No.31 Nanxiang Second Road, Science City, Huangpu District, Guangzhou, China  
Tel: 4006020999 Fax: +86-020-38698685 Website: <http://www.grgtest.com>

# TEST REPORT

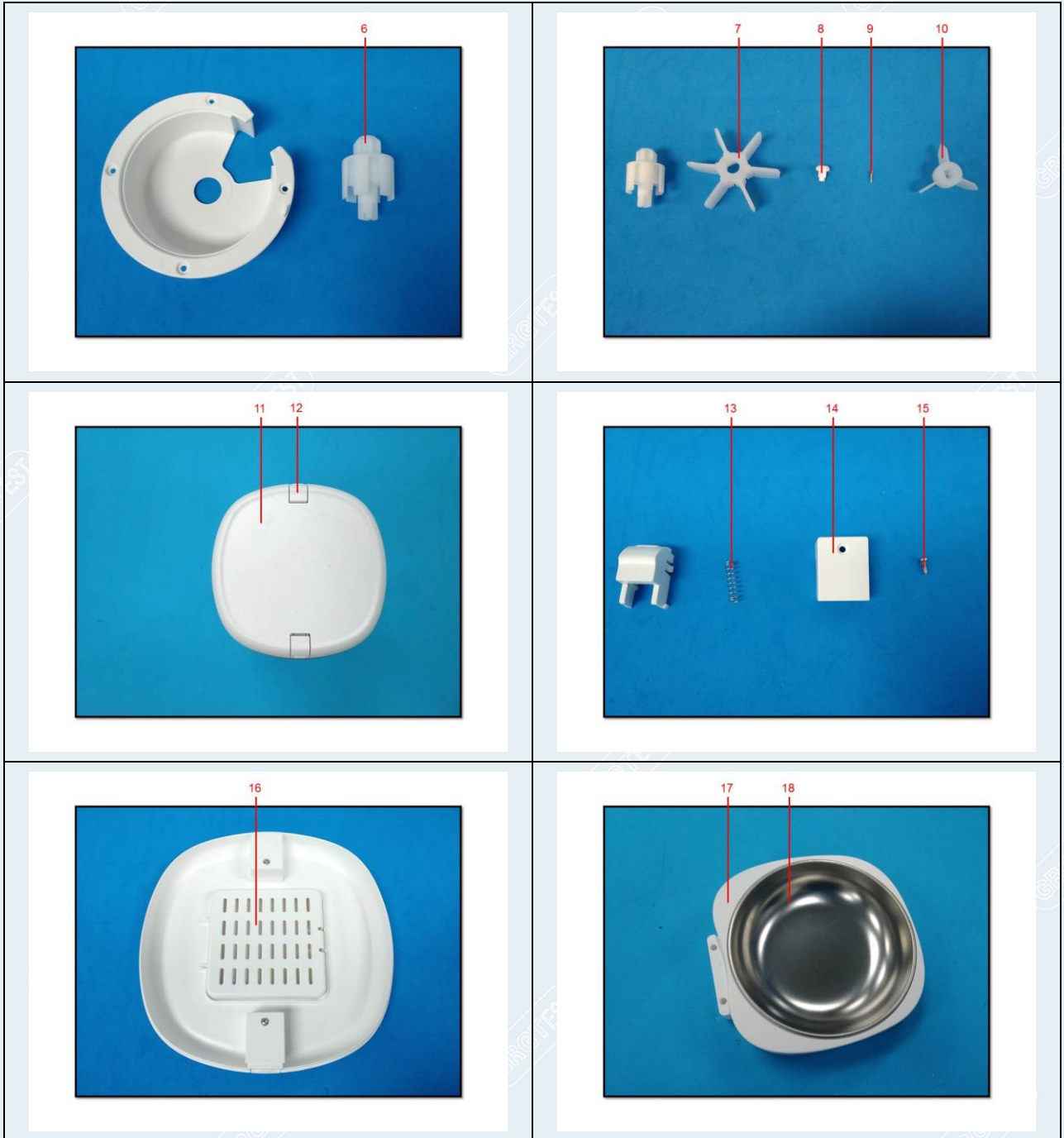
CheckCode:885386  
Report No.:C202213016256E

## Photo of Sample



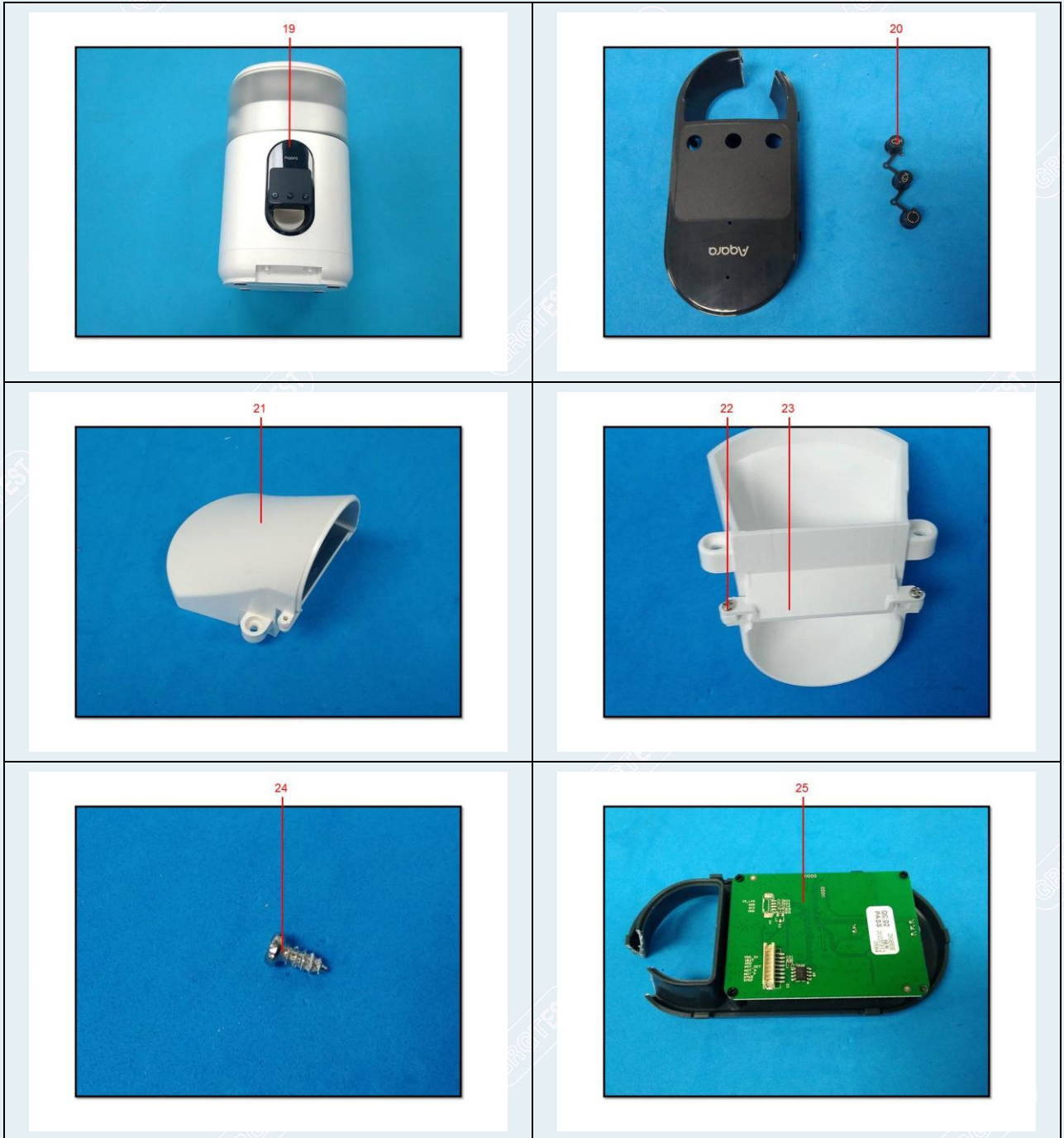
# TEST REPORT

CheckCode:885386  
Report No.:C202213016256E



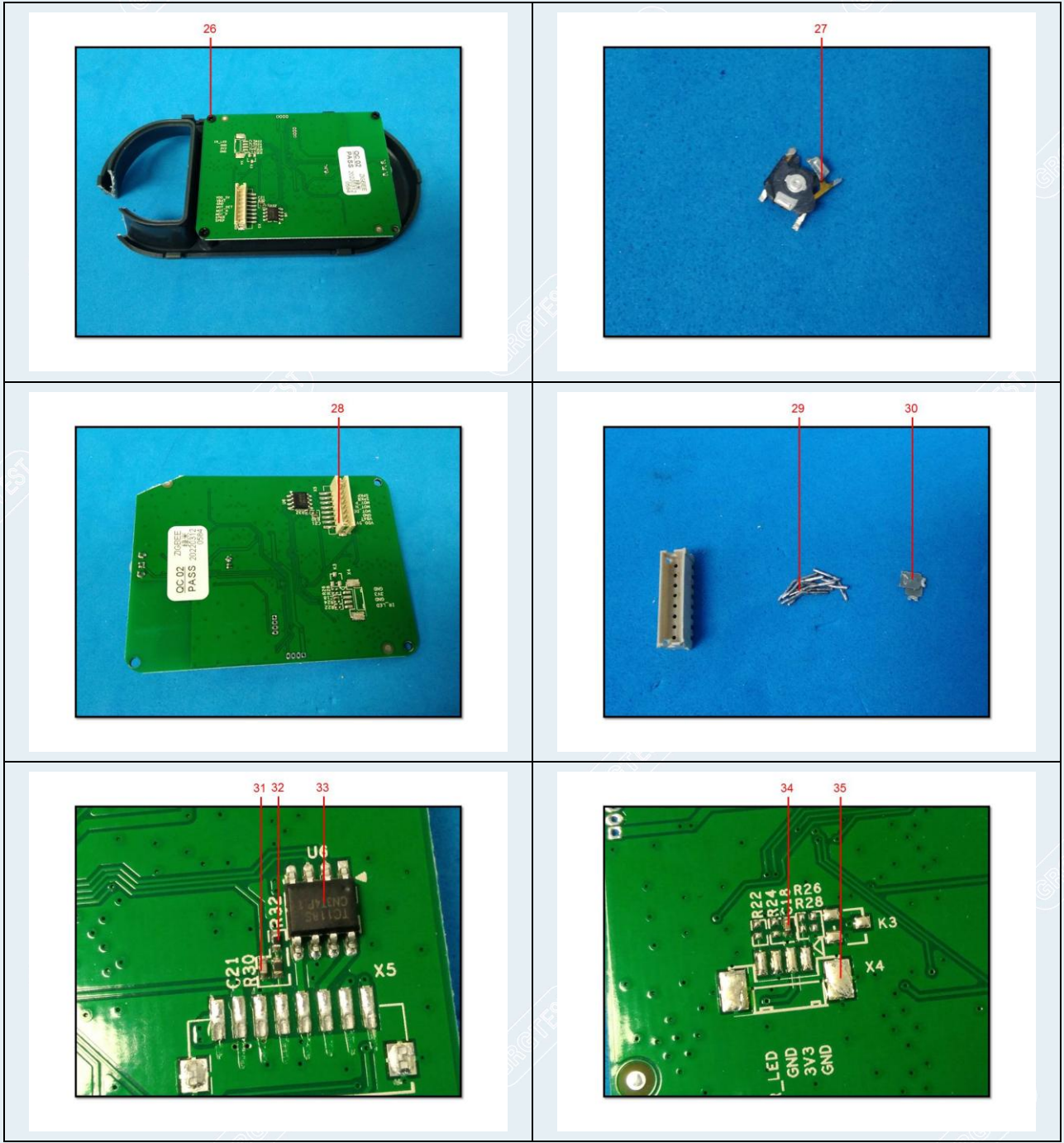
# TEST REPORT

CheckCode:885386  
Report No.:C202213016256E



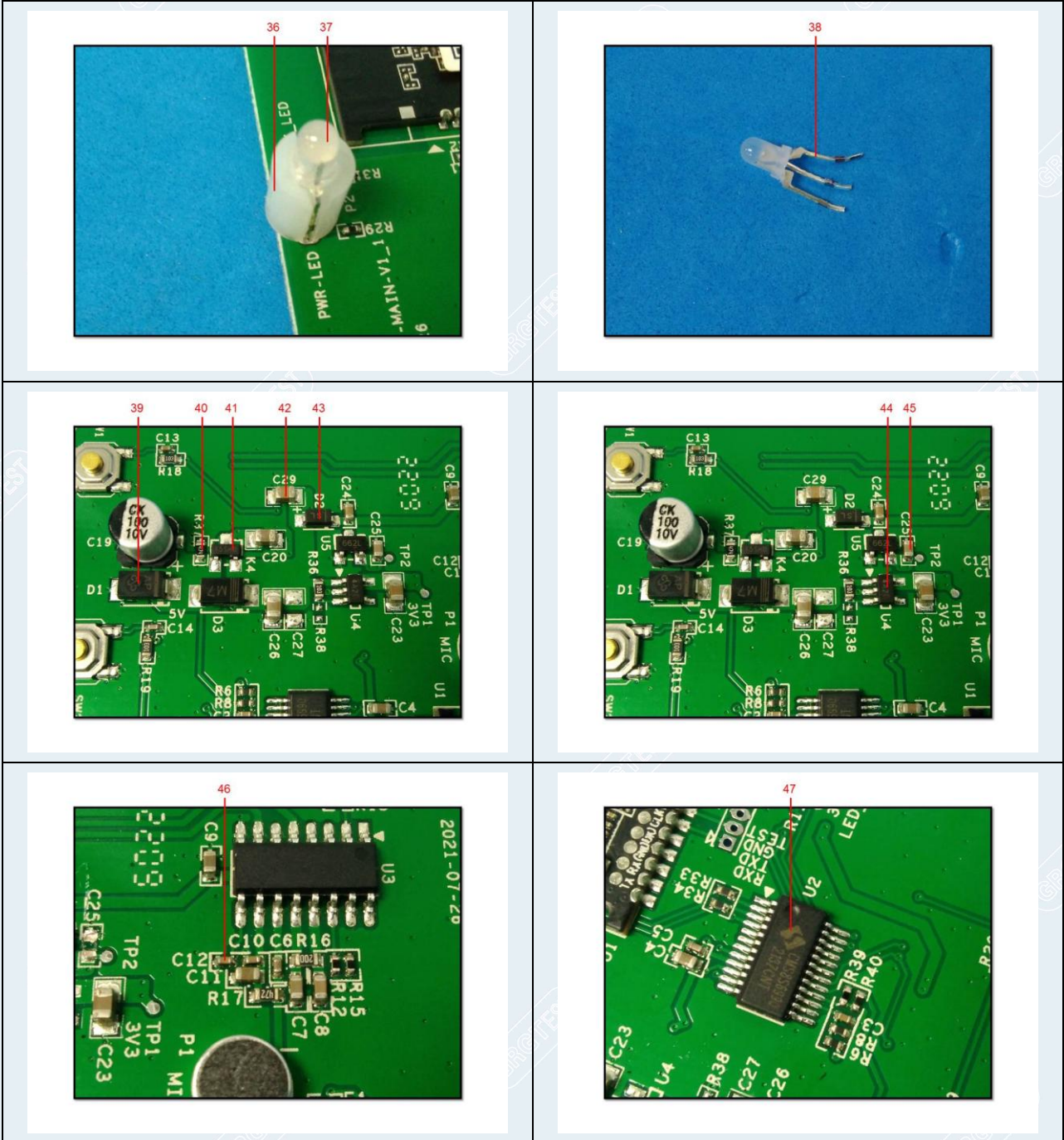
# TEST REPORT

CheckCode:885386  
Report No.:C202213016256E



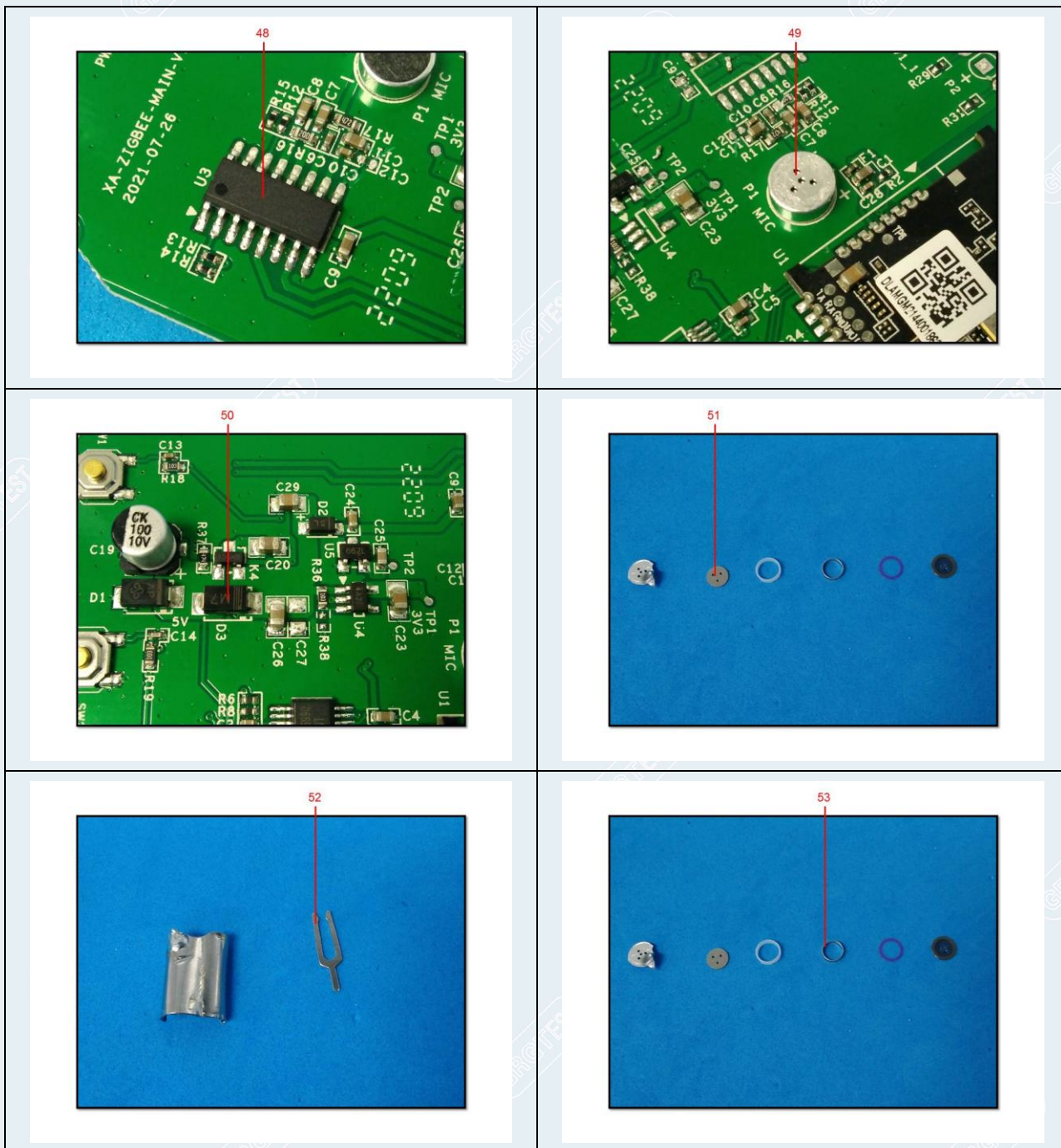
# TEST REPORT

CheckCode:885386  
Report No.:C202213016256E



# TEST REPORT

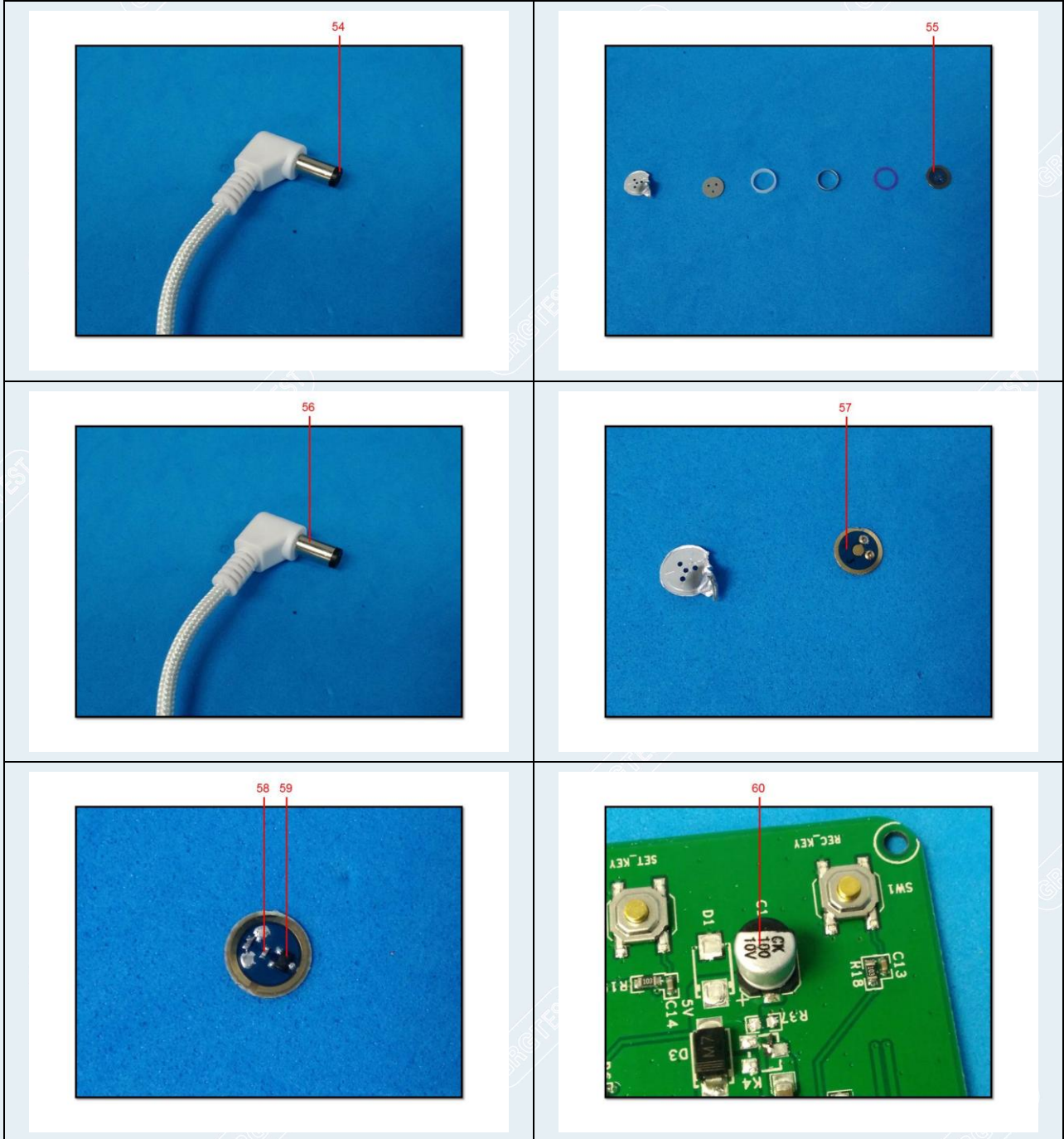
CheckCode:885386  
Report No.:C202213016256E





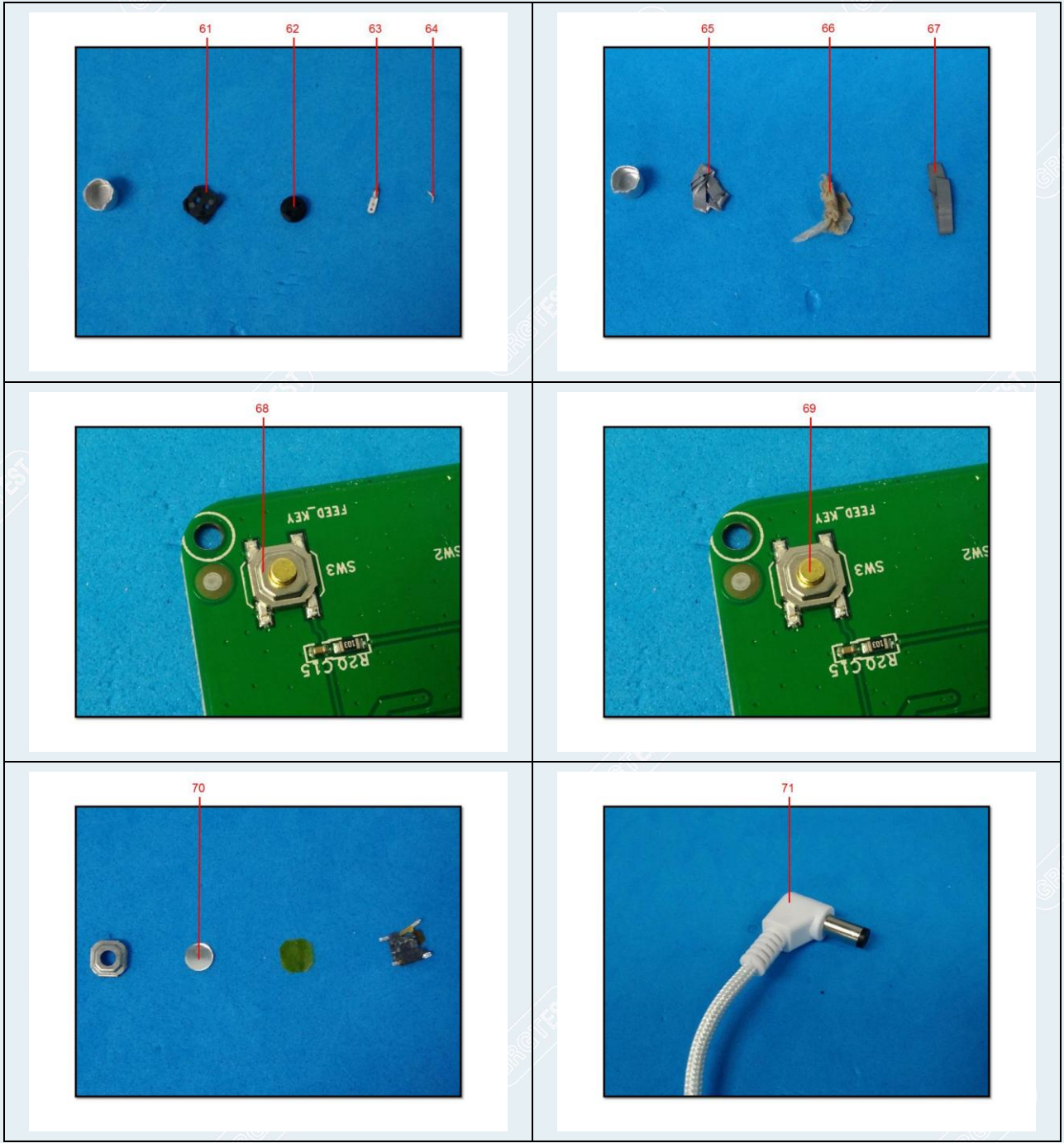
# TEST REPORT

CheckCode:885386  
Report No.:C202213016256E



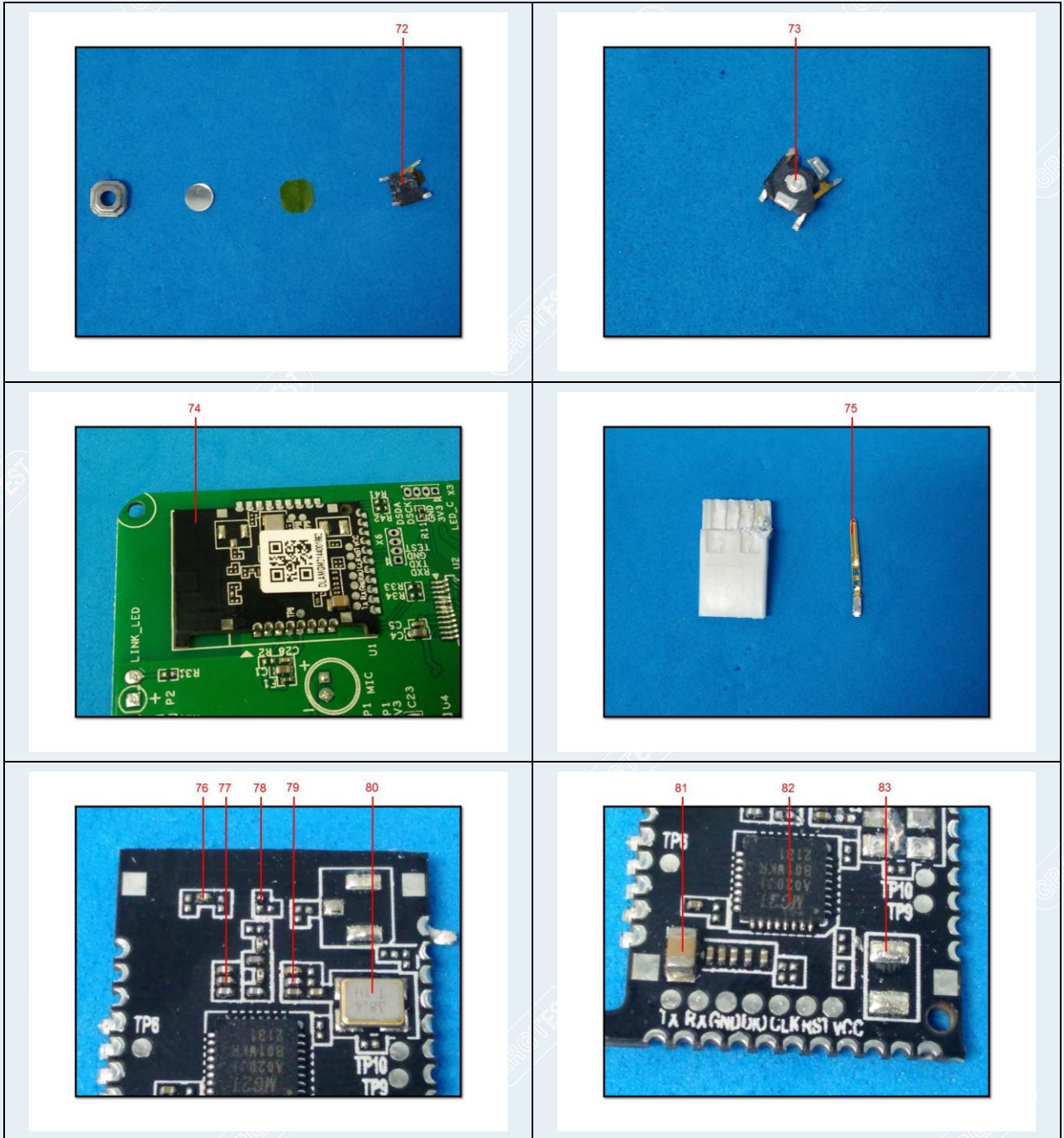
# TEST REPORT

CheckCode:885386  
Report No.:C202213016256E



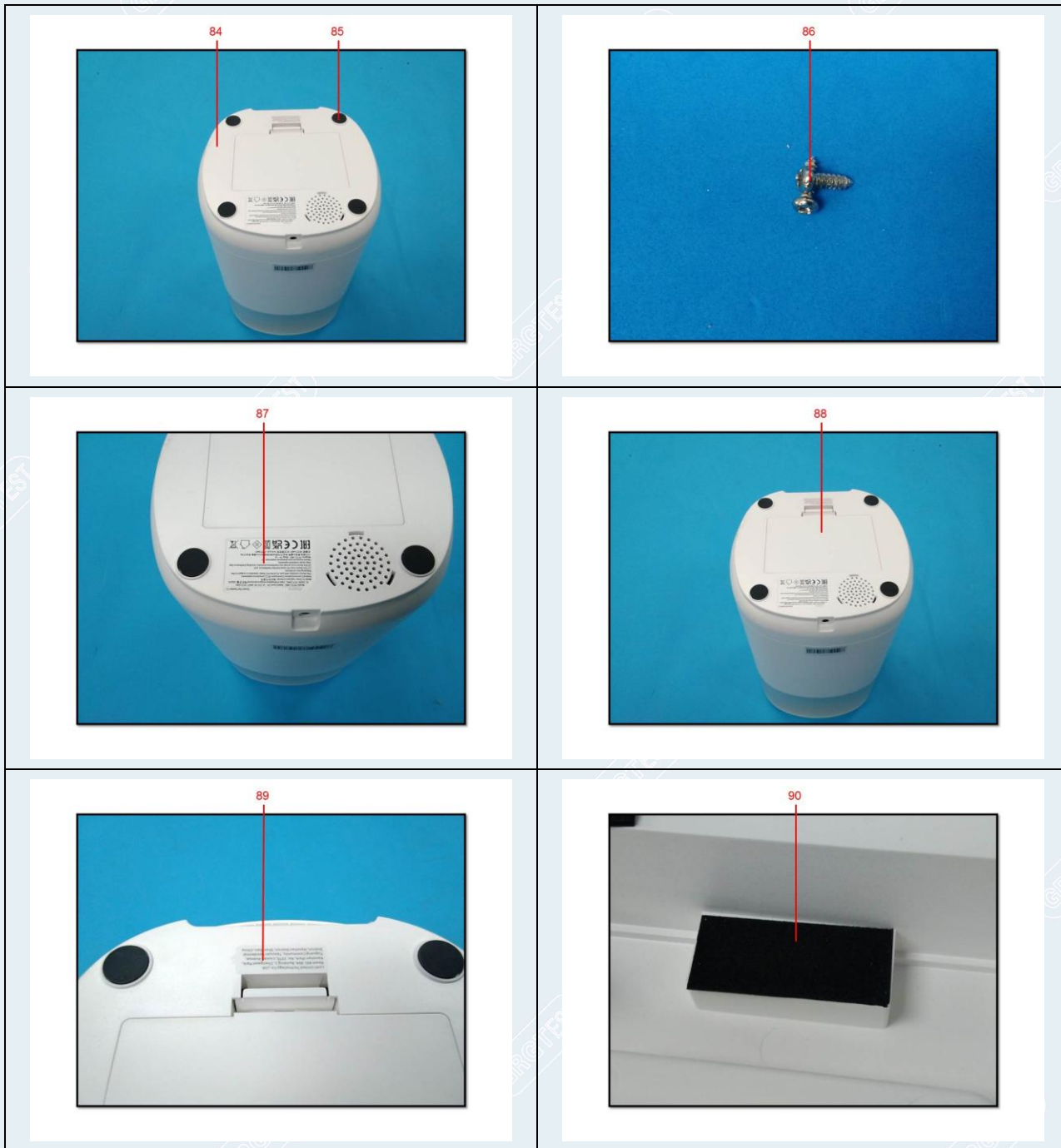
# TEST REPORT

CheckCode:885386  
Report No.:C202213016256E



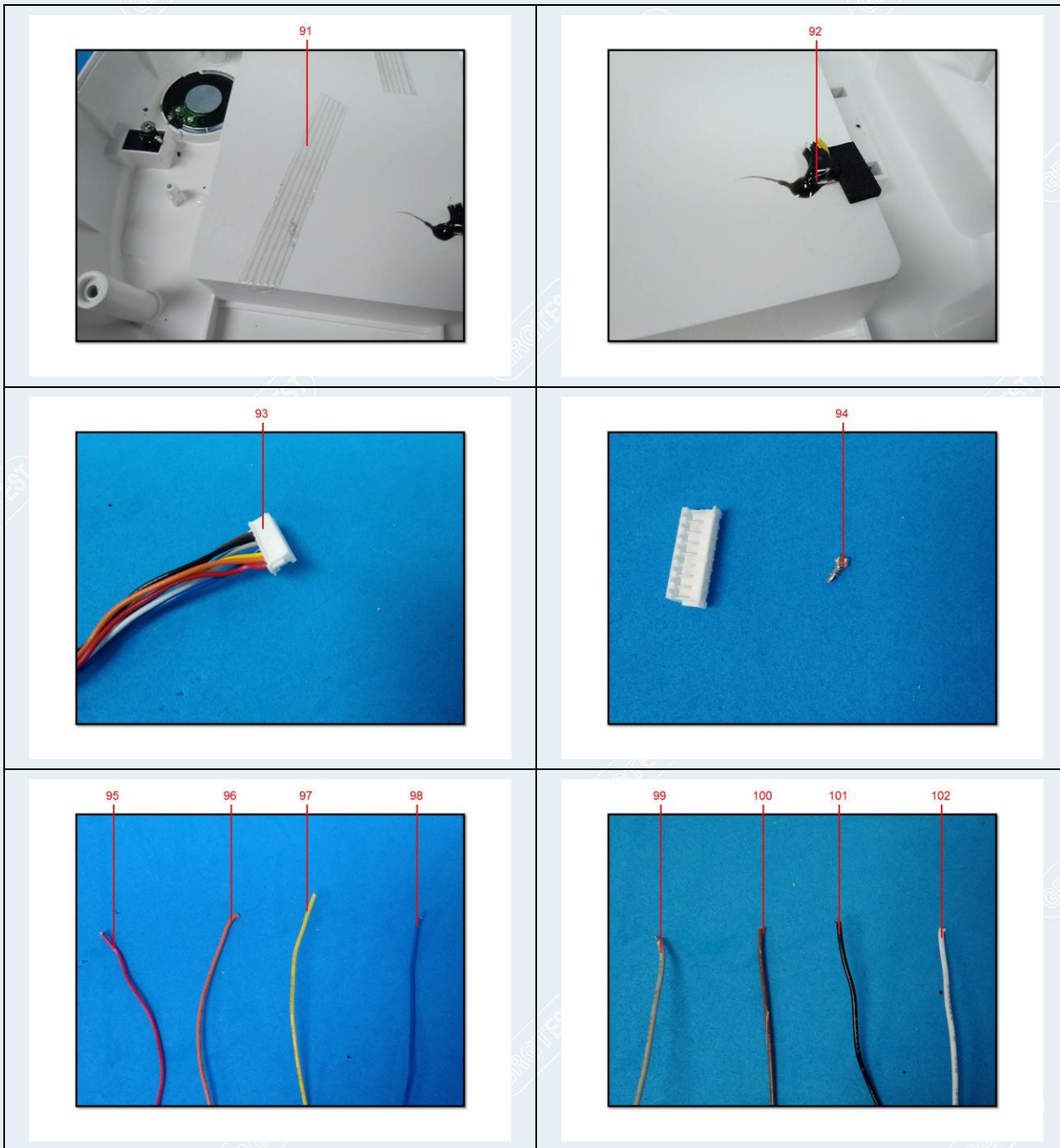
# TEST REPORT

CheckCode:885386  
Report No.:C202213016256E



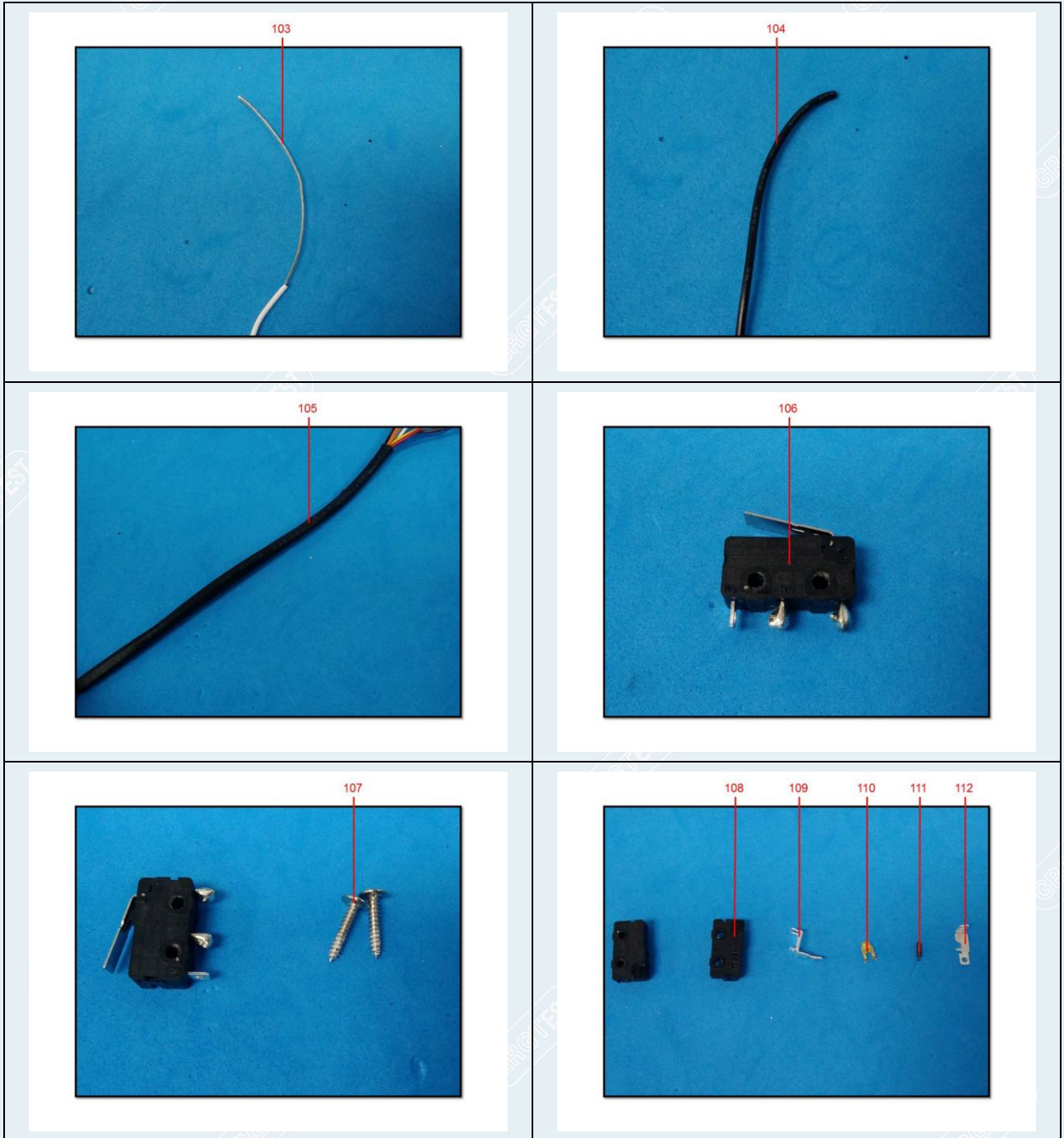
# TEST REPORT

CheckCode:885386  
Report No.:C202213016256E



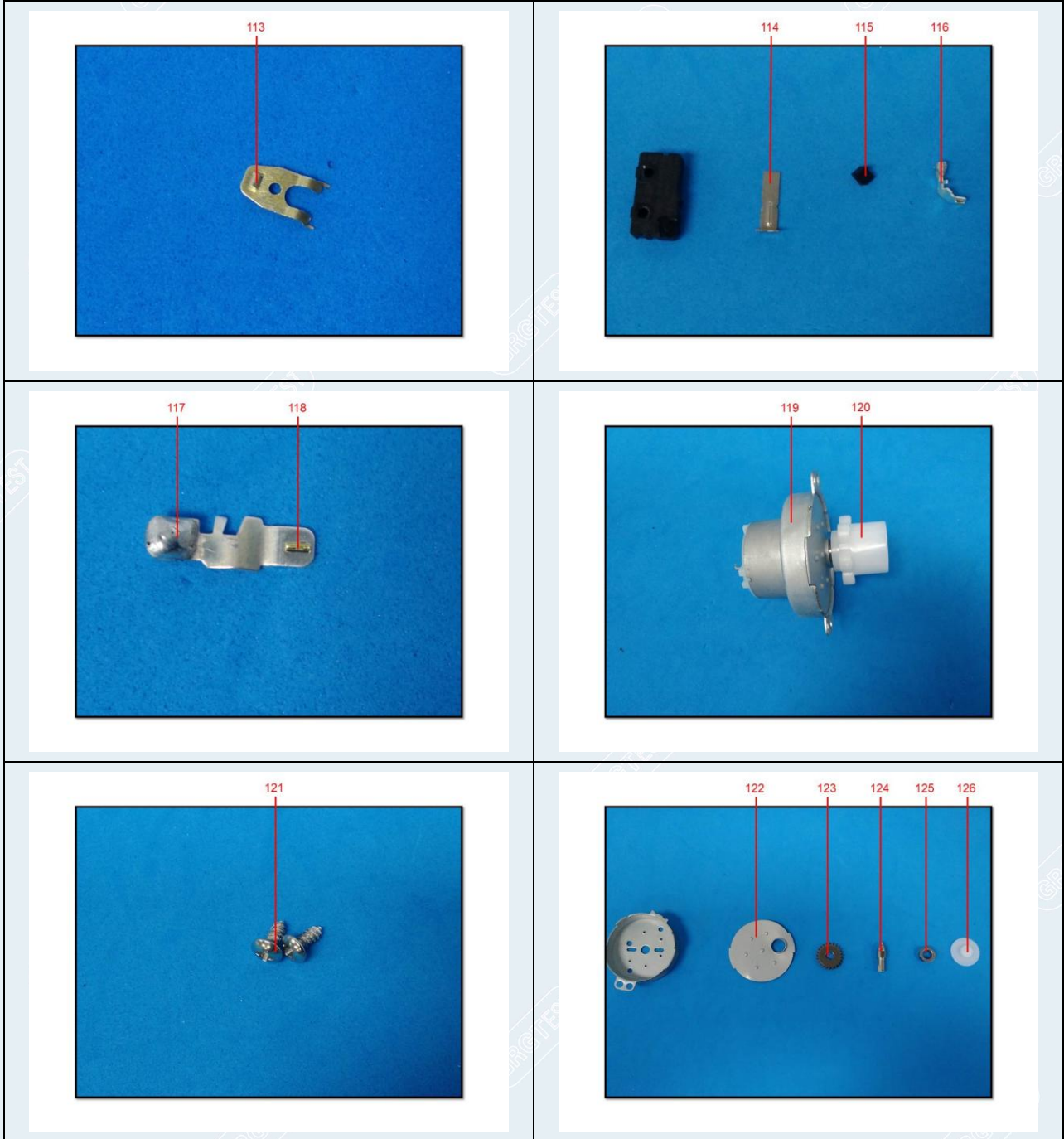
# TEST REPORT

CheckCode:885386  
Report No.:C202213016256E



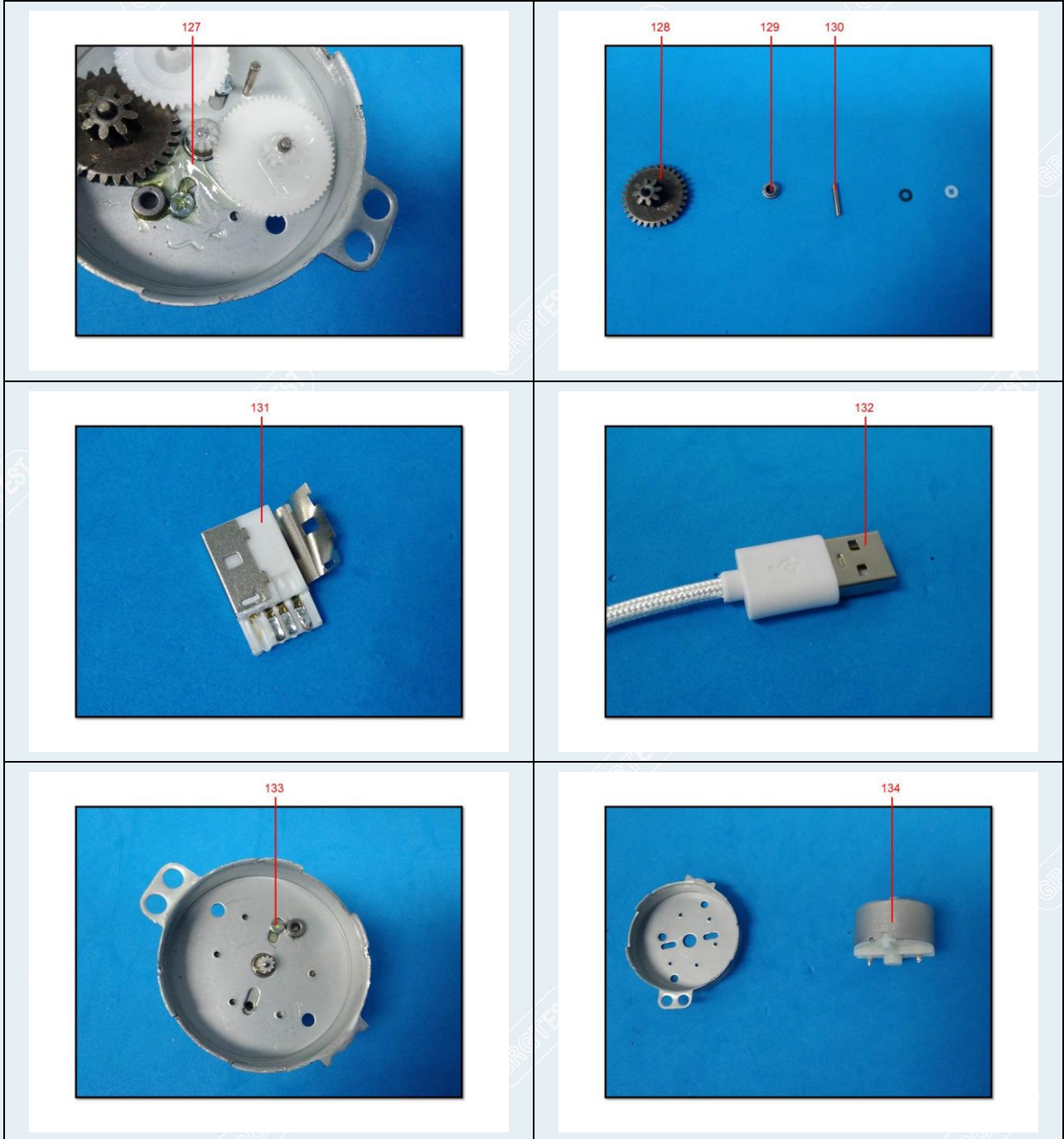
# TEST REPORT

CheckCode:885386  
Report No.:C202213016256E



# TEST REPORT

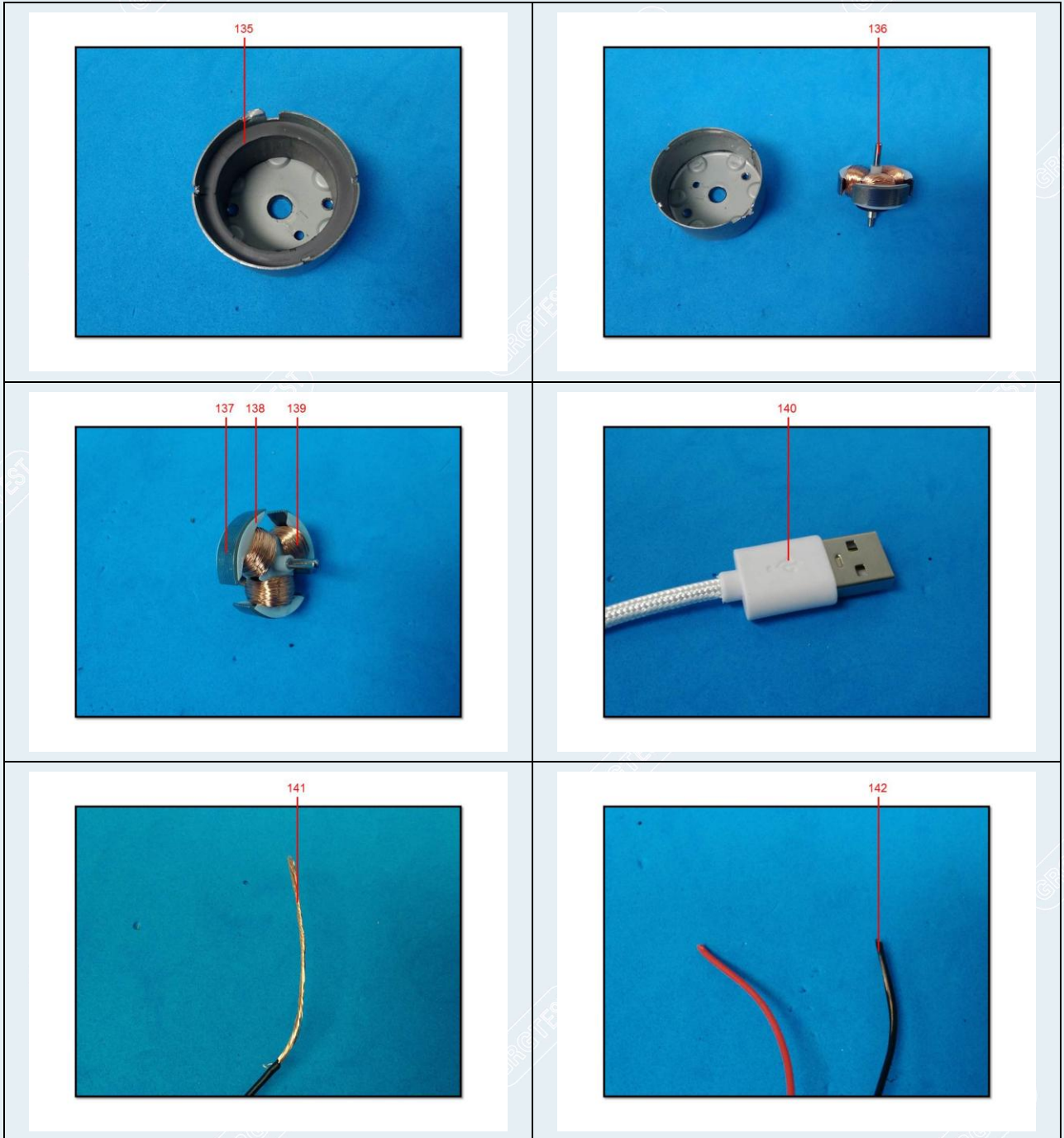
CheckCode:885386  
Report No.:C202213016256E





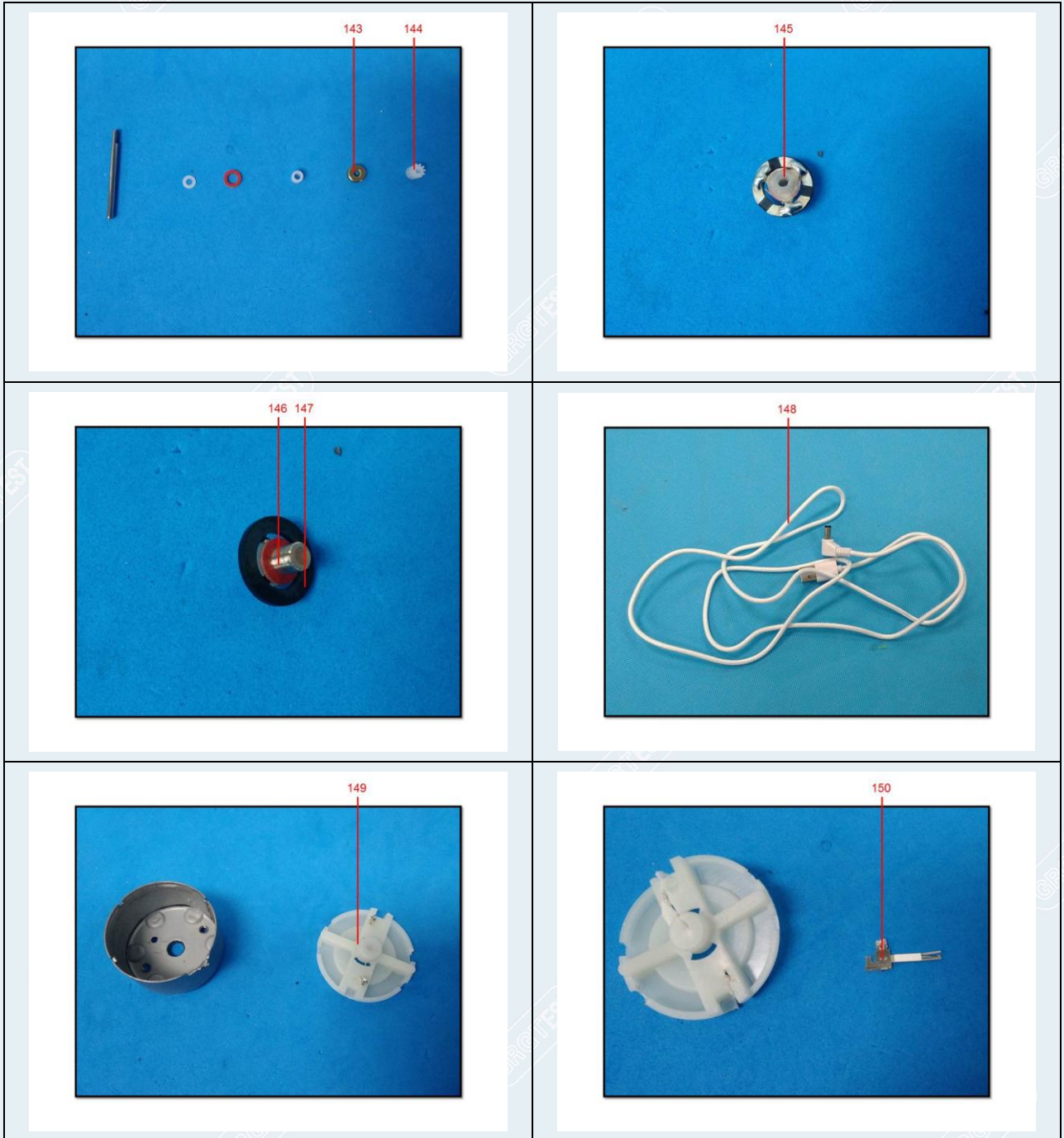
# TEST REPORT

CheckCode:885386  
Report No.:C202213016256E



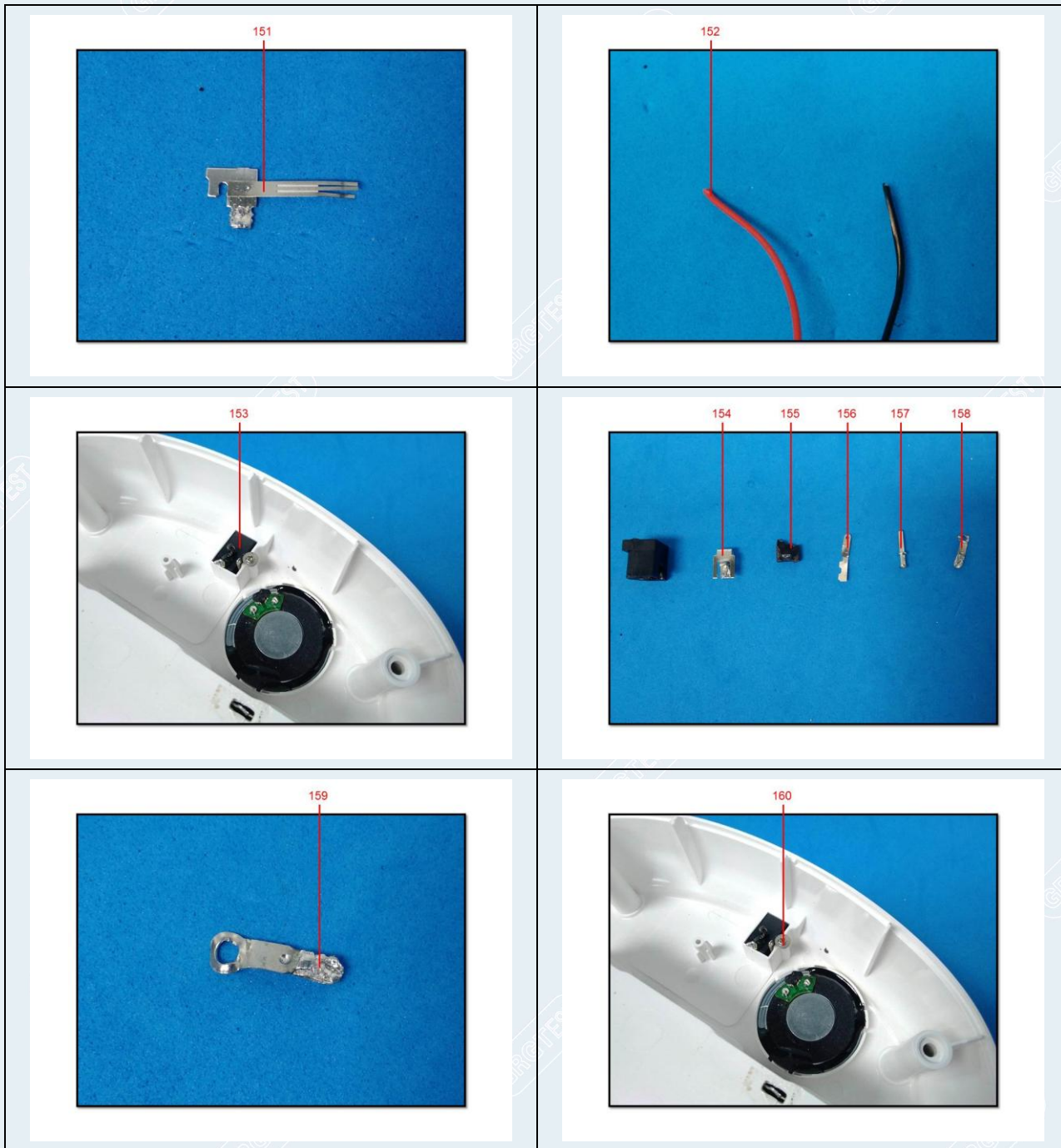
# TEST REPORT

CheckCode:885386  
Report No.:C202213016256E



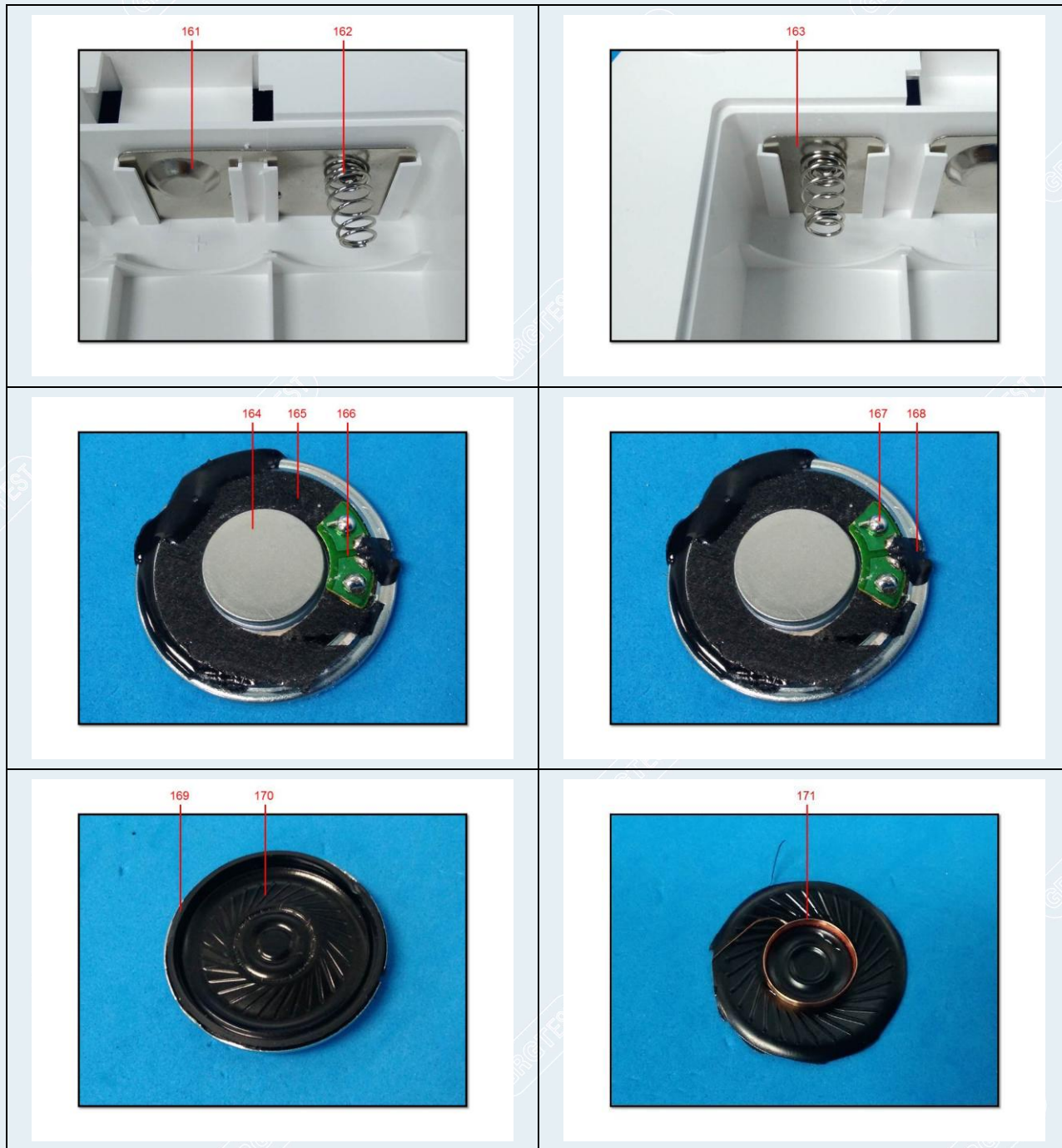
# TEST REPORT

CheckCode:885386  
Report No.:C202213016256E



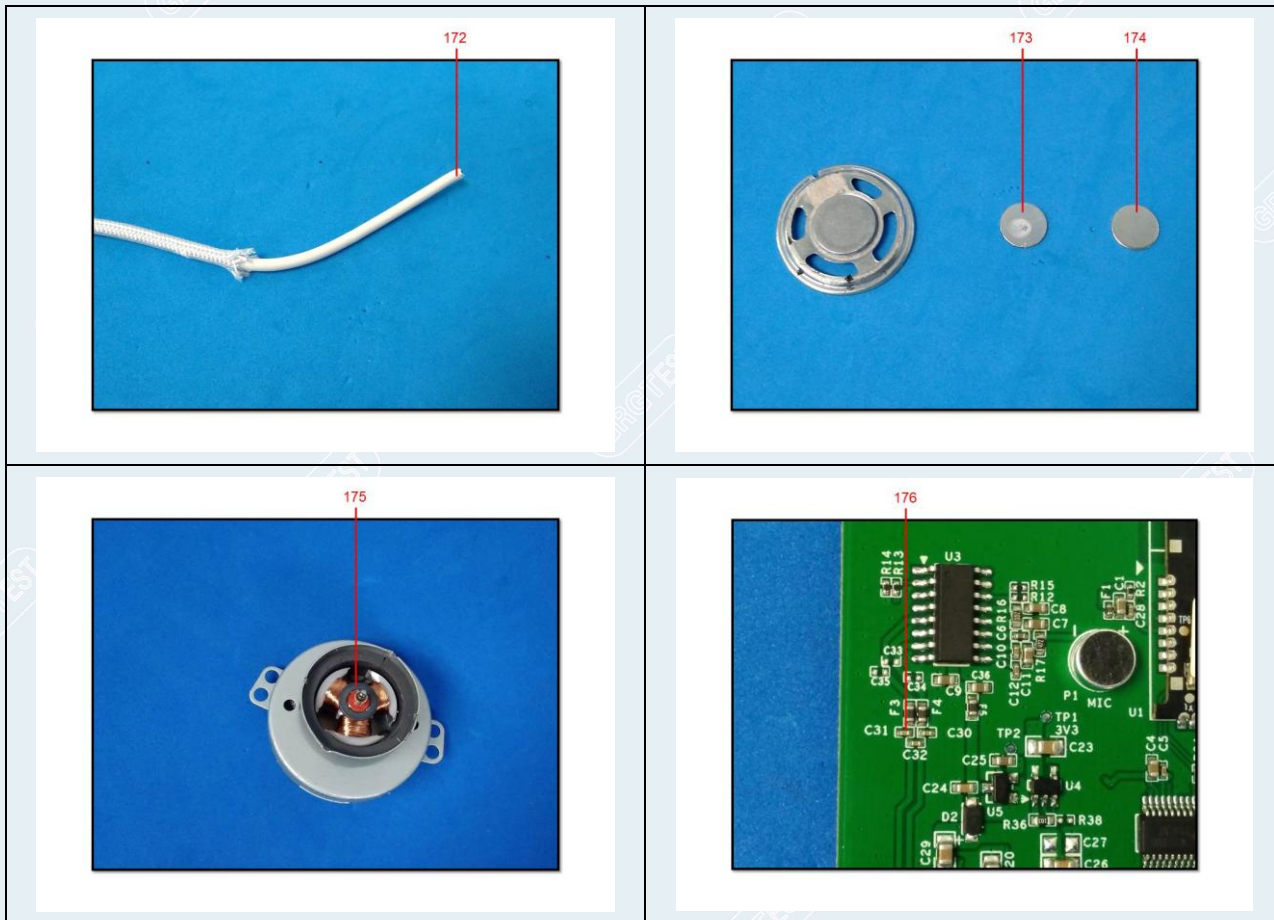
# TEST REPORT

CheckCode:885386  
Report No.:C202213016256E



# TEST REPORT

CheckCode:885386  
Report No.:C202213016256E



-----End of Report-----