

## TEST REPORT

CheckCode:469911  
Report No.:C202213022045E

**Applicant:** Lumi United Technology Co., Ltd  
**Address:** Room 801-804, Building 1, Chongwen Park, Nanshan iPark, No. 3370, Liuxian Avenue, Fuguang Community, Taoyuan Residential District, Nanshan District, Shenzhen, China

**The following sample information was submitted and identified by/on the behalf of the client**

**Name:** 1. Smart Video Doorbell G4, 2. Chime Repeater

**Specifications:** 1. SVD-C01, 2. SVD-C02

**Customer Reference** Doorbell: SVD-C03, Repeater: SVD-C04

**Information:**

**Sample State:** Normal

**Date of Receipt:** Aug.23, 2022  
Sep.19, 2022  
Nov. 16, 2022

**Test Period:** Aug.23, 2022 – Sep.23, 2022  
Nov. 16, 2022 – Nov. 23, 2022

**Test Request:** 1. Two hundred and twenty-four (224) SVHC screening is performed according to Regulation (EC) No 1907/2006 concerning the REACH.  
2. One(1) SVHC for proposed by WTO on Jun.1, 2021 screening is performed.

**Test Result:** Please refer to following page(s).

**Summary:**

|   |                                      |
|---|--------------------------------------|
| According to the specified scope and evaluation screening, the test results of SVHC are > 0.1% (w/w) in the submitted sample.<br>See A1, B5, B6, B9, B10, B11, B15. | See annex 2: obligations under REACH |
| One(1) SVHC for proposed by WTO on Jun.1, 2021 screening is performed.  | See Results                          |

Edited by Peng Liman Reviewed by Huang Yingkun Approved by Zheng Xiaojing



扫一扫 验真伪

Seal of:

**GUANGZHOU GRG METROLOGY & TEST CO., LTD.**

Issue date:Dec.1,2022

This test report is responsible for the tested samples only. Without permission of the test center this test report is not permitted to be duplicated in extracts. The test report is invalid without the specialized stamp of GUANGZHOU GRG METROLOGY & TEST CO., LTD. The test report is invalid if altered. Objections to the test report must be submitted to GUANGZHOU GRG METROLOGY & TEST CO., LTD. within 15 days.

**GUANGZHOU GRG METROLOGY & TEST CO., LTD.**

Address: No.31 Nanxiang Second Road, Science City, Huangpu District, Guangzhou, China

Tel: 4006020999 Fax: +86-020-38698685 Website: <http://www.grgtest.com>

# TEST REPORT

CheckCode:469911  
Report No.:C202213022045E

## Material list:

| No. | Sample Description                      |
|-----|---|
| 1   | Black plastic shell with grey coating   |
| 2   | Black rubber part (On No.1)             |
| 3   | Lt-blue surfaced metal screw (On No.1)  |
| 4   | Silvery metal spring (On No.3)          |
| 5   | Black plastic cover (On No.1)           |
| 6   | Black glue (On No.5)                    |
| 7   | Black adhesive sponge sheet (On No.5)   |
| 8   | Golden metal nut (On No.5)              |
| 9   | Black plastic part (In No.1)            |
| 10  | Silvery metal solder                    |
| 11  | Black surfaced metal screw (On No.9)    |
| 12  | Silvery metal nut (On No.11)            |
| 13  | Lt-blue surfaced metal screw (On No.9)  |
| 14  | Silvery metal sheet (On No.9)           |
| 15  | Silvery metal spring (On No.14)         |
| 16  | White plastic cover (On No.1)           |
| 17  | Pink rubber part (On No.16)             |
| 18  | Black adhesive foam sheet               |
| 19  | White plastic part (On No.16)           |
| 20  | Black "PCB" (In No.1)                   |
| 21  | Lt-blue surfaced metal screw (On No.20) |
| 22  | Black plastic cover (On No.1)           |
| 23  | Black plastic part (On No.22)           |
| 24  | Black rubber part (On No.22)            |
| 25  | Black "FPC" (In No.1)                   |

## GUANGZHOU GRG METROLOGY & TEST CO., LTD.

Address: No.31 Nanxiang Second Road, Science City, Huangpu District, Guangzhou, China  
Tel: 4006020999 Fax: +86-020-38698685 Website: <http://www.grgtest.com>

## TEST REPORT

CheckCode:469911  
Report No.:C202213022045E

| No. | Sample Description                  |
|-----|-------------------------------------|
| 26  | Silvery metal solder (On No.25)     |
| 27  | Black plastic jacket (On No.26)     |
| 28  | Golden metal part (On No.27)        |
| 29  | Black plastic part (In No.28)       |
| 30  | Dk-grey plastic part                |
| 31  | Silvery metal net (In No.27)        |
| 32  | Transparent plastic tube (In No.27) |
| 33  | Silvery metal wire (In No.27)       |
| 34  | Black rubber ring                   |
| 35  | Green "PCB" (In No.34)              |
| 36  | Silvery metal solder (On No.35)     |
| 37  | Black body (On No.35)               |
| 38  | Brown body (On No.35)               |
| 39  | Black body (On No.35)               |
| 40  | Golden metal shell (On No.35)       |
| 41  | Silvery material                    |
| 42  | White paper sheet                   |
| 43  | Black material                      |
| 44  | Silvery metal ring (In No.40)       |
| 45  | Silvery metal part (In No.40)       |
| 46  | Grey metal rod                      |
| 47  | Silvery metal ring (In No.40)       |
| 48  | Red plastic jacket (In No.36)       |
| 49  | Black plastic jacket (On No.36)     |
| 50  | White plastic shell (On No.48)      |
| 51  | Silvery metal terminal (In No.50)   |

**GUANGZHOU GRG METROLOGY & TEST CO., LTD.**

Address: No.31 Nanxiang Second Road, Science City, Huangpu District, Guangzhou, China  
Tel: 4006020999 Fax: +86-020-38698685 Website: <http://www.grgtest.com>

## TEST REPORT

CheckCode:469911  
Report No.:C202213022045E

| No. | Sample Description                            |
|-----|---|
| 52  | Black plastic part (On No.1)                  |
| 53  | White plastic part                            |
| 54  | Multi-colored surfaced metal sheet (On No.52) |
| 55  | Black adhesive foam ring (On No.52)           |
| 56  | White plastic sheet (On No.52)                |
| 57  | Silvery-grey metal part (In No.52)            |
| 58  | Copper-colored enameled wire (In No.52)       |
| 59  | Transparent plastic sheet (In No.52)          |
| 60  | Dk-grey plastic part                          |
| 61  | Silvery metal pin                             |
| 62  | Silvery metal solder (On No.52)               |
| 63  | Copper-colored metal wire (On No.62)          |
| 64  | Black plastic part (On No.20)                 |
| 65  | Silvery metal pin (On No.64)                  |
| 66  | Black body (On No.20)                         |
| 67  | DK-grey body (On No.20)                       |
| 68  | Brown body (small) (On No.20)                 |
| 69  | Brown body (big) (On No.20)                   |
| 70  | Dk-grey body (On No.20)                       |
| 71  | Grey body (On No.20)                          |
| 72  | Dk-brown body (On No.20)                      |
| 73  | Black body (On No.20)                         |
| 74  | Beige plastic shell (On No.20)                |
| 75  | Silvery metal pin (In No.74)                  |
| 76  | Silvery metal sheet (On No.74)                |
| 77  | Black body (3 feet) (On No.20)                |

**GUANGZHOU GRG METROLOGY & TEST CO., LTD.**

Address: No.31 Nanxiang Second Road, Science City, Huangpu District, Guangzhou, China  
Tel: 4006020999 Fax: +86-020-38698685 Website: <http://www.grgtest.com>

## TEST REPORT

CheckCode:469911  
Report No.:C202213022045E

| No. | Sample Description                        |
|-----|---|
| 78  | Black body (On No.20)                     |
| 79  | Silvery metal pin (On No.78)              |
| 80  | Silvery metal sheet (On No.20)            |
| 81  | Black body (On No.20)                     |
| 82  | Silvery metal sheet (On No.20)            |
| 83  | Silvery metal solder (On No.20)           |
| 84  | White "LED" (On No.20)                    |
| 85  | Silvery metal shell (On No.20)            |
| 86  | Golden metal button (On No.85)            |
| 87  | Silvery metal sheet (In No.85)            |
| 88  | Silvery-grey metal cover                  |
| 89  | Red translucent plastic ring              |
| 90  | Silvery metal pin (In No.85)              |
| 91  | Lt-blue surfaced metal magnet (On No.55)  |
| 92  | Lt-blue surfaced metal ring (On No.55)    |
| 93  | Lt-blue surfaced metal sheet (On No.55)   |
| 94  | Lt-blue surfaced metal magnet (On No.55)  |
| 95  | Blue "PCB"                                |
| 96  | Transparent "LED" (On No.20)              |
| 97  | Dk-blue "LED" (On No.20)                  |
| 98  | Silvery metal pin (On No.97)              |
| 99  | Black body with white printing (On No.20) |
| 100 | Black body (On No.20)                     |
| 101 | Lt-brown body (On No.20)                  |
| 102 | Black body (On No.20)                     |
| 103 | Black core (On No.20)                     |

**GUANGZHOU GRG METROLOGY & TEST CO., LTD.**

Address: No.31 Nanxiang Second Road, Science City, Huangpu District, Guangzhou, China  
Tel: 4006020999 Fax: +86-020-38698685 Website: <http://www.grgtest.com>

## TEST REPORT

CheckCode:469911  
Report No.:C202213022045E

| No. | Sample Description                         |
|-----|--|
| 104 | Silvery-grey metal shell                   |
| 105 | Silvery-grey metal shell (On No.20)        |
| 106 | Grey material (On No.105)                  |
| 107 | Black plastic part (In No.105)             |
| 108 | Black & grey ceramic sheet                 |
| 109 | Green "PCB" (In No.105)                    |
| 110 | Black body (On No.109)                     |
| 111 | Grey body (On No.109)                      |
| 112 | Silvery metal solder (On No.109)           |
| 113 | Silvery metal pin (On No.109)              |
| 114 | Lt-blue surfaced metal screw (In No.1)     |
| 115 | Black "PCB" (On No.114)                    |
| 116 | Black body (On No.115)                     |
| 117 | Black plastic shell (On No.115)            |
| 118 | Silvery metal sheet (In No.117)            |
| 119 | Black plastic button (In No.117)           |
| 120 | Silvery metal sheet (In No.117)            |
| 121 | Silvery metal pin (In No.117)              |
| 122 | Black body (On No.115)                     |
| 123 | Black body with white printing (On No.115) |
| 124 | Black body (On No.115)                     |
| 125 | Black rubber part (On No.224)              |
| 126 | Dk-grey core (On No.115)                   |
| 127 | Lt-brown body (On No.115)                  |
| 128 | Silvery metal part                         |
| 129 | Golden metal ring (On No.128)              |

**GUANGZHOU GRG METROLOGY & TEST CO., LTD.**

Address: No.31 Nanxiang Second Road, Science City, Huangpu District, Guangzhou, China  
Tel: 4006020999 Fax: +86-020-38698685 Website: <http://www.grgtest.com>

## TEST REPORT

CheckCode:469911  
Report No.:C202213022045E

| No. | Sample Description  |
|-----|---|
| 130 | Golden metal pin (On No.128)                              |
| 131 | Silvery metal shell (On No.115)                           |
| 132 | Dk-grey plastic part (In No.131)                          |
| 133 | Silvery metal sheet                                       |
| 134 | Silvery metal spring (In No.131)                          |
| 135 | Silvery metal sheet (In No.131)                           |
| 136 | Black body (On No.115)                                    |
| 137 | Silvery metal pin (On No.136)                             |
| 138 | Black adhesive plastic shell with yellow & white printing |
| 139 | Silvery body (On No.115)                                  |
| 140 | Golden metal part (On No.115)                             |
| 141 | Black body (On No.115)                                    |
| 142 | Black plastic part (On No.115)                            |
| 143 | Silvery metal terminal (In No.142)                        |
| 144 | Brown plastic sheet with white printing (On No.115)       |
| 145 | Silvery metal shell (On No.144)                           |
| 146 | Black rubber part (In No.144)                             |
| 147 | Dk-grey metal foil (In No.144)                            |
| 148 | Lt-brown paper sheet with liquid (In No.144)              |
| 149 | Grey metal foil (In No.144)                               |
| 150 | Silvery metal part (In No.144)                            |
| 151 | Silvery metal pin (On No.150)                             |
| 152 | Beige plastic shell (On No.115)                           |
| 153 | Silvery metal sheet (On No.152)                           |
| 154 | Silvery metal pin (In No.152)                             |
| 155 | Black body (On No.115)                                    |

**GUANGZHOU GRG METROLOGY & TEST CO., LTD.**

Address: No.31 Nanxiang Second Road, Science City, Huangpu District, Guangzhou, China  
Tel: 4006020999 Fax: +86-020-38698685 Website: <http://www.grgtest.com>

## TEST REPORT

CheckCode:469911  
Report No.:C202213022045E

| No. | Sample Description                                       |
|-----|--|
| 156 | Black body (8 feet) (On No.115)                          |
| 157 | Silvery body (On No.115)                                 |
| 158 | Black body (On No.115)                                   |
| 159 | Black body (8 feet) (On No.115)                          |
| 160 | Black body (On No.115)                                   |
| 161 | Silvery metal part with black coating                    |
| 162 | Transparent glass part with black printing (On No.116-2) |
| 163 | Black surfaced metal part (In No.161-2)                  |
| 164 | Translucent glass part (In No.161-2)                     |
| 165 | Black surfaced metal ring (In No.161-2)                  |
| 166 | Translucent glass part (In No.161-2)                     |
| 167 | Black surfaced metal shell (On No.161-2)                 |
| 168 | Black plastic cover (On No.67)                           |
| 169 | Black plastic part (On No.168)                           |
| 170 | Black plastic sheet (On No.169)                          |
| 171 | Multi-colored transparent glass sheet (On No.170)        |
| 172 | Transparent glass sheet (On No.170)                      |
| 173 | Silvery metal part                                       |
| 174 | Black plastic part (In No.169)                           |
| 175 | Grey core (On No.174)                                    |
| 176 | Silvery metal part (In No.169)                           |
| 177 | Copper-colored enameled wire (On No.176)                 |
| 178 | Black plastic part (On No.176)                           |
| 179 | Pink plastic jacket (On No.178)                          |
| 180 | Silvery metal solder (On No.115)                         |
| 181 | Black plastic shell                                      |

**GUANGZHOU GRG METROLOGY & TEST CO., LTD.**

Address: No.31 Nanxiang Second Road, Science City, Huangpu District, Guangzhou, China  
Tel: 4006020999 Fax: +86-020-38698685 Website: <http://www.grgtest.com>



## TEST REPORT

CheckCode:469911  
Report No.:C202213022045E

| No. | Sample Description   |
|-----|--|
| 182 | Black plastic cover (On No.181)                              |
| 183 | White adhesive plastic sheet with black printing (On No.181) |
| 184 | White plastic part (In No.181)                               |
| 185 | Black "PCB" (In No.181)                                      |
| 186 | Lt-blue surfaced metal screw (On No.185)                     |
| 187 | Silvery metal solder (On No.185)                             |
| 188 | Black body (On No.185)                                       |
| 189 | Black body (big) (On No.185)                                 |
| 190 | Black body (small) (On No.185)                               |
| 191 | Black body (On No.185)                                       |
| 192 | Silvery metal shell (On No.185)                              |
| 193 | Black plastic part   |
| 194 | Dk-grey plastic part (In No.192)                             |
| 195 | Silvery & golden surfaced metal pin (In No.192)              |
| 196 | Silvery metal spring (In No.192)                             |
| 197 | Silvery metal part (In No.192)                               |
| 198 | Black plastic part (In No.192)                               |
| 199 | Silvery & golden surfaced metal part (In No.192)             |
| 200 | Silvery metal shell (On No.185)                              |
| 201 | Black plastic part (In No.200)                               |
| 202 | Golden & silvery surfaced metal pin (In No.200)              |
| 203 | Black body (2 feet) (On No.185)                              |
| 204 | Black body (On No.185)                                       |
| 205 | Silvery metal pin (On No.191)                                |
| 206 | Multi-colored surfaced metal part (In No.181)                |
| 207 | Black adhesive fiber sheet (On No.206)                       |

**GUANGZHOU GRG METROLOGY & TEST CO., LTD.**

Address: No.31 Nanxiang Second Road, Science City, Huangpu District, Guangzhou, China  
Tel: 4006020999 Fax: +86-020-38698685 Website: <http://www.grgtest.com>

## TEST REPORT

CheckCode:469911  
Report No.:C202213022045E

| No. | Sample Description                                |
|-----|---|
| 208 | Black paper sheet (On No.206)                     |
| 209 | Black paper part (On No.208)                      |
| 210 | Black glue (On No.208)                            |
| 211 | Yellow glue (On No.206)                           |
| 212 | Beige fiber part (On No.206)                      |
| 213 | Lt-blue surfaced metal screw                      |
| 214 | Red enameled wire (On No.213)                     |
| 215 | Multi-colored surfaced metal part (On No.206)     |
| 216 | Lt-blue surfaced metal magnet (thin) (On No.215)  |
| 217 | Lt-blue surfaced metal magnet (thick) (On No.215) |
| 218 | White plastic sheet (On No.206)                   |
| 219 | Silvery metal part (On No.218)                    |
| 220 | White plastic part                                |
| 221 | Silvery-grey metal shell                          |
| 222 | Silvery metal solder (On No.218)                  |
| 223 | Silvery metal part (On No.218)                    |
| 224 | Black rubber jacket                               |
| 225 | Red metal wire (In No.224)                        |
| 226 | Copper-colored metal wire (In No.224)             |
| 227 | White fiber thread (In No.226)                    |
| 228 | Black rubber part (On No.224)                     |
| 229 | White translucent plastic part (In No.228)        |
| 230 | White plastic part (In No.228)                    |
| 231 | Silvery & golden surfaced metal pin (In No.230)   |
| 232 | Black plastic shell                               |
| 233 | Black plastic part                                |

**GUANGZHOU GRG METROLOGY & TEST CO., LTD.**

Address: No.31 Nanxiang Second Road, Science City, Huangpu District, Guangzhou, China  
Tel: 4006020999 Fax: +86-020-38698685 Website: <http://www.grgtest.com>

## TEST REPORT

CheckCode:469911  
Report No.:C202213022045E

| No. | Sample Description                     |
|-----|--|
| 234 | White plastic cover with black coating |
| 235 | Black plastic part                     |

| Testing groups | Testing requirement                               | Composition                             |
|----------------|---|---|
| A1             | 72 Substances of Very High Concern(SVHC) testing  | 3+4+8+11+12+13+14+15+21+26              |
| A2             | 72 Substances of Very High Concern(SVHC) testing  | 28+31+33+36+40+44+45+47+51              |
| A3             | 72 Substances of Very High Concern(SVHC) testing  | 54+57+62+63+65+75+76+79+80+82           |
| A4             | 72 Substances of Very High Concern(SVHC) testing  | 83+85+86+87+90+91+92+93+94+98           |
| A5             | 72 Substances of Very High Concern(SVHC) testing  | 105+112+113+114+118+120+121+129+130+131 |
| A6             | 72 Substances of Very High Concern(SVHC) testing  | 134+135+137+140+143+145+147+149+150+151 |
| A7             | 72 Substances of Very High Concern(SVHC) testing  | 153+154+163+165+167+176+180+186+187+192 |
| A8             | 72 Substances of Very High Concern(SVHC) testing  | 195+196+197+199+200+202+205+206+215+216 |
| A9             | 72 Substances of Very High Concern(SVHC) testing  | 217+219+222+223+225+226+231+108+133     |
| A10            | 72 Substances of Very High Concern(SVHC) testing  | 128+61+10+221+213+173+104+88+46         |
| B1             | 224 Substances of Very High Concern(SVHC) testing | 148                                     |
| B2             | 224 Substances of Very High Concern(SVHC) testing | 1+161                                   |
| B3             | 224 Substances of Very High Concern(SVHC) testing | 2+5+6+7+9+16+17+19                      |
| B4             | 224 Substances of Very High Concern(SVHC) testing | 20+22+23+24+25+27+29+32+35              |
| B5             | 224 Substances of Very High Concern(SVHC) testing | 37+38+39+48+49+50                       |
| B6             | 224 Substances of Very High Concern(SVHC) testing | 52+55+56+58+59+64+66                    |
| B7             | 224 Substances of Very High Concern(SVHC) testing | 67+68+69+70+71+72+73+74+77+78           |
| B8             | 224 Substances of Very High Concern(SVHC) testing | 81+84+96+97+99+100+101                  |
| B9             | 224 Substances of Very High Concern(SVHC) testing | 102+103+106+107+109+110+111+115         |

## GUANGZHOU GRG METROLOGY &amp; TEST CO., LTD.

Address: No.31 Nanxiang Second Road, Science City, Huangpu District, Guangzhou, China  
Tel: 4006020999 Fax: +86-020-38698685 Website: <http://www.grgtest.com>

## TEST REPORT

CheckCode:469911  
Report No.:C202213022045E

| Testing groups | Testing requirement  | Composition                             |
|----------------|--|---|
| B10            | 224 Substances of Very High Concern(SVHC) testing                        | 116+117+119+122+123+124+126+127         |
| B11            | 224 Substances of Very High Concern(SVHC) testing                        | 132+136+139+141+142+144+146+152         |
| B12            | 224 Substances of Very High Concern(SVHC) testing                        | 155+156+157+158+159+160+162+164+166+168 |
| B13            | 224 Substances of Very High Concern(SVHC) testing                        | 169+170+171+172+174+175+177+178+179     |
| B14            | 224 Substances of Very High Concern(SVHC) testing                        | 181+182+183+184+185+188+189+190+191     |
| B15            | 224 Substances of Very High Concern(SVHC) testing                        | 194+198+201+203+204+207+208+209+210+211 |
| B16            | 224 Substances of Very High Concern(SVHC) testing                        | 212+214+218+224+227+228+229+230         |
| B17            | 224 Substances of Very High Concern(SVHC) testing                        | 125+30+95+60+220+193+138+89             |
| B18            | 224 Substances of Very High Concern(SVHC) testing                        | 53+43+42+41+34+18                       |
| B19            | 224 Substances of Very High Concern(SVHC) testing                        | 232+233+234+235                         |
| B1             | 1 Substances to propose as substances of Very High Concern(SVHC) testing | 148                                     |
| B2             | 1 Substances to propose as substances of Very High Concern(SVHC) testing | 1+161                                   |
| B3             | 1 Substances to propose as substances of Very High Concern(SVHC) testing | 2+5+6+7+9+16+17+19                      |
| B4             | 1 Substances to propose as substances of Very High Concern(SVHC) testing | 20+22+23+24+25+27+29+32+35              |
| B5             | 1 Substances to propose as substances of Very High Concern(SVHC) testing | 37+38+39+48+49+50                       |
| B6             | 1 Substances to propose as substances of Very High Concern(SVHC) testing | 52+55+56+58+59+64+66                    |
| B7             | 1 Substances to propose as substances of Very High Concern(SVHC) testing | 67+68+69+70+71+72+73+74+77+78           |
| B8             | 1 Substances to propose as substances of Very High Concern(SVHC) testing | 81+84+96+97+99+100+101                  |

**GUANGZHOU GRG METROLOGY & TEST CO., LTD.**

Address: No.31 Nanxiang Second Road, Science City, Huangpu District, Guangzhou, China  
Tel: 4006020999 Fax: +86-020-38698685 Website: <http://www.grgtest.com>

# TEST REPORT

CheckCode:469911  
Report No.:C202213022045E

| Testing groups | Testing requirement  | Composition                             |
|----------------|--|---|
| B9             | 1 Substances to propose as substances of Very High Concern(SVHC) testing | 102+103+106+107+109+110+111+115         |
| B10            | 1 Substances to propose as substances of Very High Concern(SVHC) testing | 116+117+119+122+123+124+126+127         |
| B11            | 1 Substances to propose as substances of Very High Concern(SVHC) testing | 132+136+139+141+142+144+146+152         |
| B12            | 1 Substances to propose as substances of Very High Concern(SVHC) testing | 155+156+157+158+159+160+162+164+166+168 |
| B13            | 1 Substances to propose as substances of Very High Concern(SVHC) testing | 169+170+171+172+174+175+177+178+179     |
| B14            | 1 Substances to propose as substances of Very High Concern(SVHC) testing | 181+182+183+184+185+188+189+190+191     |
| B15            | 1 Substances to propose as substances of Very High Concern(SVHC) testing | 194+198+201+203+204+207+208+209+210+211 |
| B16            | 1 Substances to propose as substances of Very High Concern(SVHC) testing | 212+214+218+224+227+228+229+230         |
| B17            | 1 Substances to propose as substances of Very High Concern(SVHC) testing | 125+30+95+60+220+193+138+89             |
| B18            | 1 Substances to propose as substances of Very High Concern(SVHC) testing | 53+43+42+41+34+18                       |
| B19            | 1 Substances to propose as substances of Very High Concern(SVHC) testing | 232+233+234+235                         |

## GUANGZHOU GRG METROLOGY & TEST CO., LTD.

Address: No.31 Nanxiang Second Road, Science City, Huangpu District, Guangzhou, China  
Tel: 4006020999 Fax: +86-020-38698685 Website: <http://www.grgtest.com>

## TEST REPORT

CheckCode:469911  
Report No.:C202213022045E

## Test Result(s):

Test Method: In-house method, GC-MS, GC-ECD/NCI-GC/MS, HPLC and UPLC-PDA-MS quantification of relevant SVHC (substances of very high concern) in material samples;  
ICP-OES-screening, AAS-screening after decomposition for determination of relevant SVHC.

## 1. 224 Substances of Very High Concern(SVHC)

| Substance name    | CAS No.   | Reporting Limit (%) | Result (%) |       |       |      |       |
|-------------------|-----------|---------------------|------------|-------|-------|------|-------|
|                   |           |                     | A1         | A2    | A3    | A4   | A5    |
| Lead※             | 7439-92-1 | 0.005               | 3.445      | 0.021 | 0.047 | N.D. | 0.024 |
| Other tested SVHC | ---       | ---                 | N.D.       | N.D.  | N.D.  | N.D. | N.D.  |

| Substance name    | CAS No.   | Reporting Limit (%) | Result (%) |      |      |       |      |
|-------------------|-----------|---------------------|------------|------|------|-------|------|
|                   |           |                     | A6         | A7   | A8   | A9    | A10  |
| Lead※             | 7439-92-1 | 0.005               | 0.006      | N.D. | N.D. | 0.051 | N.D. |
| Other tested SVHC | ---       | ---                 | N.D.       | N.D. | N.D. | N.D.  | N.D. |

| Substance name    | CAS No.   | Reporting Limit (%) | Result (%) |      |      |       |       |
|-------------------|-----------|---------------------|------------|------|------|-------|-------|
|                   |           |                     | B1         | B2   | B3   | B4    | B5    |
| Lead※             | 7439-92-1 | 0.005               | N.D.       | N.D. | N.D. | N.D.  | 0.225 |
| Trichloroethylene | 79-01-6   | 0.030               | N.D.       | N.D. | N.D. | 0.074 | N.D.  |
| Other tested SVHC | ---       | ---                 | N.D.       | N.D. | N.D. | N.D.  | N.D.  |

| Substance name    | CAS No.   | Reporting Limit (%) | Result (%) |       |       |       |       |
|-------------------|-----------|---------------------|------------|-------|-------|-------|-------|
|                   |           |                     | B6         | B7    | B8    | B9    | B10   |
| Lead※             | 7439-92-1 | 0.005               | 0.120      | 0.015 | 0.083 | 1.725 | 2.200 |
| Other tested SVHC | ---       | ---                 | N.D.       | N.D.  | N.D.  | N.D.  | N.D.  |

## GUANGZHOU GRG METROLOGY &amp; TEST CO., LTD.

Address: No.31 Nanxiang Second Road, Science City, Huangpu District, Guangzhou, China  
Tel: 4006020999 Fax: +86-020-38698685 Website: <http://www.grgtest.com>

## TEST REPORT

CheckCode:469911  
Report No.:C202213022045E

| Substance name    | CAS No.   | Reporting Limit (%) | Result (%) |       |      |       |       |
|-------------------|-----------|---------------------|------------|-------|------|-------|-------|
|                   |           |                     | B11        | B12   | B13  | B14   | B15   |
| Lead※             | 7439-92-1 | 0.005               | 2.233      | 0.010 | N.D. | 0.027 | 1.471 |
| Other tested SVHC | ---       | ---                 | N.D.       | N.D.  | N.D. | N.D.  | N.D.  |

| Substance name   | CAS No.    | Reporting Limit (%) | Result (%) |       |      |      |
|--|------------|---------------------|------------|-------|------|------|
|  |            |                     | B16        | B17   | B18  | B19  |
| 2-methyl-1-(4-methylthiophenyl)-2-morpholinopropan-1-one | 71868-10-5 | 0.030               | N.D.       | 0.093 | N.D. | N.D. |
| Other tested SVHC  | ---        | ---                 | N.D.       | N.D.  | N.D. | N.D. |

## 2.1 Substances to propose as Substances of Very High Concern(SVHC)

| Substance name   | CAS No. | Reporting Limit (%) | Result (%) |      |      |      |      |
|--|---------|---------------------|------------|------|------|------|------|
|  |         |                     | B1         | B2   | B3   | B4   | B5   |
| All substances to propose as Substances of Very High Concern | ---     | ---                 | N.D.       | N.D. | N.D. | N.D. | N.D. |

| Substance name   | CAS No. | Reporting Limit (%) | Result (%) |      |      |      |      |
|--|---------|---------------------|------------|------|------|------|------|
|  |         |                     | B6         | B7   | B8   | B9   | B10  |
| All substances to propose as Substances of Very High Concern | ---     | ---                 | N.D.       | N.D. | N.D. | N.D. | N.D. |

| Substance name   | CAS No. | Reporting Limit (%) | Result (%) |      |      |      |      |
|--|---------|---------------------|------------|------|------|------|------|
|  |         |                     | B11        | B12  | B13  | B14  | B15  |
| All substances to propose as Substances of Very High Concern | ---     | ---                 | N.D.       | N.D. | N.D. | N.D. | N.D. |

## TEST REPORT

CheckCode:469911  
Report No.:C202213022045E

| Substance name   | CAS No. | Reporting Limit (%) | Result (%) |      |      |      |
|--|---------|---------------------|------------|------|------|------|
|  |         |                     | B16        | B17  | B18  | B19  |
| All substances to propose as Substances of Very High Concern | ---     | ---                 | N.D.       | N.D. | N.D. | N.D. |

- Remark:
- 1) The table above only shows detected substances, and substances that below Reporting Limit are not reported. Please refer to Annex 1 for the full list of tested SVHC.
  - 2) \*The substances are tested in term of its respective elements (e.g. As, Pb, Cr(VI), B).
  - 3) §The substance is proposed for the identification as target compound only where it contains Michler's ketone(CAS No.:90-94-8) or Michler's base(CAS No.:101-61-1)  $\geq 0.1\%$ (w/w).
  - 4) Anthracene are tested by Polycyclic and heterocyclic Aromatic Hydrocarbons.
  - 5) \*,※The analysis of these substances is conducted for metal components.
  - 6) "N.D." = Not Detected (Below Reporting Limit).
  - 7) Results shown are of the minimum weight of mixed samples.
  - 8) The performed tests on selected parts of submitted sample(s).
  - 9) As the specimen 29,32,34,35,36,56,59,106,112,211, were insufficient, the test result(s) was /were based on sample resubmitted by 2022-09-19.

## Annex 1 - Full list of tested SVHC:

## 1. 224Substances of Very High Concern(SVHC):

| No. | Substance name  | CAS No.    | Reporting Limit (%) |
|-----|---|------------|---------------------|
| 1   | 4,4'- Diaminodiphenylmethane (MDA)                          | 101-77-9   | 0.030               |
| 2   | 5-tert-butyl-2,4,6-trinitro-m-xylene (Musk xylene)          | 81-15-2    | 0.030               |
| 3   | Alkanes, C10-13, chloro (Short Chain Chlorinated Paraffins) | 85535-84-8 | 0.030               |
| 4   | Anthracene  | 120-12-7   | 0.030               |
| 5   | Benzyl butyl phthalate (BBP)                                | 85-68-7    | 0.030               |
| 6   | Bis (2-ethylhexyl)phthalate (DEHP)                          | 117-81-7   | 0.030               |
| 7   | Bis(tributyltin) oxide (TBTO)                               | 56-35-9    | 0.030               |
| 8   | Cobalt dichloride*  | 7646-79-9  | 0.005               |

## GUANGZHOU GRG METROLOGY &amp; TEST CO., LTD.

Address: No.31 Nanxiang Second Road, Science City, Huangpu District, Guangzhou, China  
Tel: 4006020999 Fax: +86-020-38698685 Website: <http://www.grgtest.com>



## TEST REPORT

CheckCode:469911  
Report No.:C202213022045E

| No. | Substance name  | CAS No.  | Reporting Limit (%) |
|-----|---|--|---------------------|
| 9   | Diarsenic pentaoxide*   | 1303-28-2  | 0.005               |
| 10  | Diarsenic trioxide*   | 1327-53-3  | 0.005               |
| 11  | Dibutyl phthalate (DBP)   | 84-74-2  | 0.030               |
| 12  | Hexabromocyclododecane (HBCDD) and all major diastereoisomers identified( $\alpha$ -HBCDD, $\beta$ -HBCDD, $\gamma$ -HBCDD) | 25637-99-4<br>3194-55-6<br>(134237-51-7,<br>134237-50-6,<br>134237-52-8) | 0.030               |
| 13  | Lead hydrogen arsenate*   | 7784-40-9  | 0.005               |
| 14  | Sodium dichromate*  | 7789-12-0,<br>10588-01-9   | 0.005               |
| 15  | Triethyl arsenate*  | 15606-95-8   | 0.005               |
| 16  | 2,4-dinitrotoluene  | 121-14-2   | 0.030               |
| 17  | Acrylamide  | 79-06-1  | 0.030               |
| 18  | Anthracene oil  | 90640-80-5   | 0.030               |
| 19  | Anthracene oil, anthracene paste  | 90640-81-6   | 0.030               |
| 20  | Anthracene oil, anthracene paste, anthracene fraction   | 91995-15-2   | 0.030               |
| 21  | Anthracene oil, anthracene paste, distn. lights   | 91995-17-4   | 0.030               |
| 22  | Anthracene oil, anthracene-low  | 90640-82-7   | 0.030               |
| 23  | Diisobutyl phthalate  | 84-69-5  | 0.030               |
| 24  | Lead chromate*  | 7758-97-6  | 0.010               |
| 25  | Lead chromate molybdate sulphate red (C.I. Pigment Red 104) *   | 12656-85-8   | 0.010               |
| 26  | Lead sulfochromate yellow (C.I. Pigment Yellow 34) *  | 1344-37-2  | 0.010               |
| 27  | Pitch, coal tar, high-temp.   | 65996-93-2   | 0.030               |
| 28  | Tris(2-chloroethyl) phosphate   | 115-96-8   | 0.030               |
| 29  | Ammonium dichromate*  | 7789-09-5  | 0.010               |

**GUANGZHOU GRG METROLOGY & TEST CO., LTD.**

Address: No.31 Nanxiang Second Road, Science City, Huangpu District, Guangzhou, China  
Tel: 4006020999 Fax: +86-020-38698685 Website: <http://www.grgtest.com>

## TEST REPORT

CheckCode:469911  
Report No.:C202213022045E

| No. | Substance name  | CAS No.                                | Reporting Limit (%) |
|-----|---|--|---------------------|
| 30  | Boric acid*   | 10043-35-3,<br>11113-50-1              | 0.010               |
| 31  | Disodium tetraborate, anhydrous*  | 12179-04-3,<br>1303-96-4,<br>1330-43-4 | 0.010               |
| 32  | Potassium chromate*   | 7789-00-6                              | 0.010               |
| 33  | Potassium dichromate*   | 7778-50-9                              | 0.010               |
| 34  | Sodium chromate*  | 7775-11-3                              | 0.010               |
| 35  | Tetraboron disodium heptaoxide, hydrate*                                    | 12267-73-1                             | 0.010               |
| 36  | Trichloroethylene   | 79-01-6                                | 0.030               |
| 37  | 2-ethoxyethanol   | 110-80-5                               | 0.030               |
| 38  | 2-methoxyethanol  | 109-86-4                               | 0.030               |
| 39  | Chromic acid, Oligomers of chromic acid and dichromic acid, Dichromic acid* | 7738-94-5,<br>---<br>13530-68-2        | 0.010               |
| 40  | Chromium trioxide*  | 1333-82-0                              | 0.010               |
| 41  | Cobalt(II) carbonate*   | 513-79-1                               | 0.010               |
| 42  | Cobalt(II) diacetate*   | 71-48-7                                | 0.010               |
| 43  | Cobalt(II) dinitrate*   | 10141-05-6                             | 0.010               |
| 44  | Cobalt(II) sulphate*  | 10124-43-3                             | 0.010               |
| 45  | 1,2,3-trichloropropane  | 96-18-4                                | 0.030               |
| 46  | 1,2-Benzenedicarboxylic acid, di-C6-8-branched alkyl esters, C7-rich        | 71888-89-6                             | 0.030               |
| 47  | 1,2-Benzenedicarboxylic acid, di-C7-11-branched and linear alkyl esters     | 68515-42-4                             | 0.030               |
| 48  | 1-Methyl-2-pyrrolidone (NMP)  | 872-50-4                               | 0.030               |
| 49  | 2-ethoxyethyl acetate   | 111-15-9                               | 0.030               |
| 50  | Hydrazine   | 302-01-2,<br>7803-57-8                 | 0.030               |

**GUANGZHOU GRG METROLOGY & TEST CO., LTD.**

Address: No.31 Nanxiang Second Road, Science City, Huangpu District, Guangzhou, China  
Tel: 4006020999 Fax: +86-020-38698685 Website: <http://www.grgtest.com>

## TEST REPORT

CheckCode:469911  
Report No.:C202213022045E

| No. | Substance name   | CAS No.    | Reporting Limit (%) |
|-----|--|------------|---------------------|
| 51  | Strontium chromate*  | 7789-06-2  | 0.010               |
| 52  | 1,2-dichloroethane   | 107-06-2   | 0.030               |
| 53  | 2,2'-dichloro-4,4'-methylenedianiline  | 101-14-4   | 0.030               |
| 54  | 2-Methoxyaniline, o-Anisidine  | 90-04-0    | 0.030               |
| 55  | 4-(1,1,3,3-tetramethylbutyl)phenol   | 140-66-9   | 0.030               |
| 56  | Aluminosilicate Refractory Ceramic Fibres*   | ---        | 0.010               |
| 57  | Arsenic acid*  | 7778-39-4  | 0.010               |
| 58  | Bis(2-methoxyethyl) ether  | 111-96-6   | 0.030               |
| 59  | Bis(2-methoxyethyl) phthalate  | 117-82-8   | 0.030               |
| 60  | Calcium arsenate*  | 7778-44-1  | 0.010               |
| 61  | Dichromium tris(chromate) *  | 24613-89-6 | 0.010               |
| 62  | Formaldehyde, oligomeric reaction products with aniline  | 25214-70-4 | 0.030               |
| 63  | Lead diazide, Lead azide*  | 13424-46-9 | 0.010               |
| 64  | Lead dipicrate*  | 6477-64-1  | 0.010               |
| 65  | Lead styphnate*  | 15245-44-0 | 0.010               |
| 66  | N,N-dimethylacetamide  | 127-19-5   | 0.030               |
| 67  | Pentazinc chromate octahydroxide*  | 49663-84-5 | 0.010               |
| 68  | Phenolphthalein  | 77-09-8    | 0.030               |
| 69  | Potassium hydroxyoctaoxodizincatedichromate*   | 11103-86-9 | 0.010               |
| 70  | Trilead diarsenate*  | 3687-31-8  | 0.010               |
| 71  | Zirconia Aluminosilicate Refractory Ceramic Fibres*  | ---        | 0.010               |
| 72  | [4-[[4-anilino-1-naphthyl][4-(dimethylamino)phenyl]methylene]cyclohexa-2,5-dien-1-ylidene] dimethylammonium chloride (C.I. Basic Blue 26)§ | 2580-56-5  | 0.030               |

**GUANGZHOU GRG METROLOGY & TEST CO., LTD.**

Address: No.31 Nanxiang Second Road, Science City, Huangpu District, Guangzhou, China  
Tel: 4006020999 Fax: +86-020-38698685 Website: <http://www.grgtest.com>

## TEST REPORT

CheckCode:469911  
Report No.:C202213022045E

| No. | Substance name   | CAS No.     | Reporting Limit (%) |
|-----|--|-------------|---------------------|
| 73  | [4-[4,4'-bis(dimethylamino)benzhydrylidene]cyclohexa-2,5-dien-1-ylidene]dimethylammonium chloride (C.I. Basic Violet 3)§ | 548-62-9    | 0.030               |
| 74  | 1,2-bis(2-methoxyethoxy)ethane (TEGDME, triglyme)  | 112-49-2    | 0.030               |
| 75  | 1,2-dimethoxyethane, ethylene glycol dimethyl ether (EGDME)  | 110-71-4    | 0.030               |
| 76  | 4,4'-bis(dimethylamino)benzophenone (Michler's ketone)   | 90-94-8     | 0.030               |
| 77  | 4,4'-bis(dimethylamino)-4''-(methylamino)trityl alcohol§   | 561-41-1    | 0.030               |
| 78  | Diboron trioxide*  | 1303-86-2   | 0.010               |
| 79  | Formamide  | 75-12-7     | 0.030               |
| 80  | Lead(II) bis(methanesulfonate) *   | 17570-76-2  | 0.010               |
| 81  | N,N,N',N'-tetramethyl-4,4'-methylenedianiline (Michler's base)   | 101-61-1    | 0.030               |
| 82  | 1,3,5-Tris(oxiran-2-ylmethyl)-1,3,5-triazinane-2,4,6-trione (TGIC)   | 2451-62-9   | 0.030               |
| 83  | α,α-Bis[4-(dimethylamino)phenyl]-4(phenylamino)naphthalene-1-methanol (C.I. Solvent Blue 4)§                             | 6786-83-0   | 0.030               |
| 84  | 1,3,5-tris[(2S and 2R)-2,3-epoxypropyl]-1,3,5-triazine-2,4,6-(1H,3H,5H)-trione (β-TGIC)                                  | 59653-74-6  | 0.030               |
| 85  | [Phthalato(2-)]dioxotrilead*   | 69011-06-9  | 0.010               |
| 86  | 1,2-Benzenedicarboxylic acid, dipentyl ester, branched and linear  | 84777-06-0  | 0.030               |
| 87  | 1,2-diethoxyethane   | 629-14-1    | 0.030               |
| 88  | 1-bromopropane (n-propyl bromide)  | 106-94-5    | 0.030               |
| 89  | 3-ethyl-2-methyl-2-(3-methylbutyl)-1,3-oxazolidine   | 143860-04-2 | 0.030               |

**GUANGZHOU GRG METROLOGY & TEST CO., LTD.**

Address: No.31 Nanxiang Second Road, Science City, Huangpu District, Guangzhou, China  
Tel: 4006020999 Fax: +86-020-38698685 Website: <http://www.grgtest.com>

## TEST REPORT

CheckCode:469911  
Report No.:C202213022045E

| No. | Substance name  | CAS No.                               | Reporting Limit (%) |
|-----|---|---------------------------------------|---------------------|
| 90  | 4-(1,1,3,3-tetramethylbutyl)phenol, ethoxylated<br>(covering well-defined substances and UVCB substances, polymers and homologues)  | ---                                   | 0.030               |
| 91  | 4,4'-methylenedi-o-toluidine  | 838-88-0                              | 0.030               |
| 92  | 4,4'-oxydianiline and its salts   | 101-80-4                              | 0.030               |
| 93  | 4-aminoazobenzene   | 60-09-3                               | 0.030               |
| 94  | 4-methyl-m-phenylenediamine<br>(toluene-2,4-diamine)  | 95-80-7                               | 0.030               |
| 95  | 4-Nonylphenol, branched and linear<br>(substances with a linear and/or branched alkyl chain with a carbon number of 9 covalently bound in position 4 to phenol, covering also UVCB- and well-defined substances which include any of the individual isomers or a combination thereof) | ---                                   | 0.030               |
| 96  | 6-methoxy-m-toluidine (p-cresidine)   | 120-71-8                              | 0.030               |
| 97  | Acetic acid, lead salt, basic*  | 51404-69-4                            | 0.010               |
| 98  | Biphenyl-4-ylamine  | 92-67-1                               | 0.030               |
| 99  | Bis(pentabromophenyl) ether<br>(decabromodiphenyl ether) (DecaBDE)  | 1163-19-5                             | 0.030               |
| 100 | Cyclohexane-1,2-dicarboxylic anhydride, cis-cyclohexane-1,2-dicarboxylic anhydride, trans-cyclohexane-1,2-dicarboxylic anhydride  | 85-42-7,<br>13149-00-3,<br>14166-21-3 | 0.030               |
| 101 | Diazene-1,2-dicarboxamide<br>(C,C'-azodi(formamide)) (ADCA)   | 123-77-3                              | 0.030               |
| 102 | Dibutyltin dichloride (DBTC)  | 683-18-1                              | 0.030               |
| 103 | Diethyl sulphate  | 64-67-5                               | 0.030               |
| 104 | Diisopentyl phthalate   | 605-50-5                              | 0.030               |
| 105 | Dimethyl sulphate   | 77-78-1                               | 0.030               |
| 106 | Dinoseb (6-sec-butyl-2,4-dinitrophenol)   | 88-85-7                               | 0.030               |
| 107 | Dioxobis(stearato)trilead*  | 12578-12-0                            | 0.010               |

**GUANGZHOU GRG METROLOGY & TEST CO., LTD.**

Address: No.31 Nanxiang Second Road, Science City, Huangpu District, Guangzhou, China  
Tel: 4006020999 Fax: +86-020-38698685 Website: <http://www.grgtest.com>

## TEST REPORT

CheckCode:469911  
Report No.:C202213022045E

| No. | Substance name   | CAS No.   | Reporting Limit (%) |
|-----|--|---|---------------------|
| 108 | Fatty acids, C16-18, lead salts*   | 91031-62-8  | 0.010               |
| 109 | Furan  | 110-00-9  | 0.030               |
| 110 | Henicosaflluoroundecanoic acid   | 2058-94-8   | 0.030               |
| 111 | Heptacosaflluorotetradecanoic acid   | 376-06-7  | 0.030               |
| 112 | Hexahydromethylphthalic anhydride,<br>Hexahydro-4-methylphthalic anhydride,<br>Hexahydro-1-methylphthalic anhydride,<br>Hexahydro-3-methylphthalic anhydride | 25550-51-0,<br>19438-60-9,<br>48122-14-1,<br>57110-29-9 | 0.030               |
| 113 | Lead bis(tetrafluoroborate) *  | 13814-96-5  | 0.010               |
| 114 | Lead cyanamidate*  | 20837-86-9  | 0.010               |
| 115 | Lead dinitrate*  | 10099-74-8  | 0.010               |
| 116 | Lead monoxide (lead oxide) *   | 1317-36-8   | 0.010               |
| 117 | Lead oxide sulfate*  | 12036-76-9  | 0.010               |
| 118 | Orange lead (lead tetroxide) *   | 1314-41-6   | 0.010               |
| 119 | Lead titanium trioxide*  | 12060-00-3  | 0.010               |
| 120 | Lead titanium zirconium oxide*   | 12626-81-2  | 0.010               |
| 121 | Methoxyacetic acid   | 625-45-6  | 0.030               |
| 122 | Methyloxirane (Propylene oxide)  | 75-56-9   | 0.030               |
| 123 | N,N-dimethylformamide  | 68-12-2   | 0.030               |
| 124 | N-methylacetamide  | 79-16-3   | 0.030               |
| 125 | N-pentyl-isopentylphthalate  | 776297-69-9   | 0.030               |
| 126 | o-aminoazotoluene  | 97-56-3   | 0.030               |
| 127 | o-toluidine  | 95-53-4   | 0.030               |
| 128 | Pentacosaflluorotridecanoic acid   | 72629-94-8  | 0.030               |
| 129 | Pentalead tetraoxide sulphate*   | 12065-90-6  | 0.010               |
| 130 | Pyrochlore, antimony lead yellow*  | 8012-00-8   | 0.010               |
| 131 | Silicic acid, barium salt, lead-doped*   | 68784-75-8  | 0.010               |

**GUANGZHOU GRG METROLOGY & TEST CO., LTD.**

Address: No.31 Nanxiang Second Road, Science City, Huangpu District, Guangzhou, China  
Tel: 4006020999 Fax: +86-020-38698685 Website: <http://www.grgtest.com>

## TEST REPORT

CheckCode:469911  
Report No.:C202213022045E

| No. | Substance name   | CAS No.    | Reporting Limit (%) |
|-----|--|------------|---------------------|
| 132 | Silicic acid, lead salt*   | 11120-22-2 | 0.010               |
| 133 | Sulfurous acid, lead salt, dibasic*  | 62229-08-7 | 0.010               |
| 134 | Tetraethyllead*  | 78-00-2    | 0.010               |
| 135 | Tetralead trioxide sulphate*   | 12202-17-4 | 0.010               |
| 136 | Tricosafuorododecanoic acid  | 307-55-1   | 0.030               |
| 137 | Trilead bis(carbonate) dihydroxide*  | 1319-46-6  | 0.010               |
| 138 | Trilead dioxide phosphonate*   | 12141-20-7 | 0.010               |
| 139 | 4-Nonylphenol, branched and linear, ethoxylated<br>(substances with a linear and/or branched alkyl chain with a carbon number of 9 covalently bound in position 4 to phenol, ethoxylated covering UVCB- and well-defined substances, polymers and homologues, which include any of the individual isomers and/or combinations thereof) | ---        | 0.030               |
| 140 | Ammonium pentadecafluorooctanoate (APFO)   | 3825-26-1  | 0.030               |
| 141 | Cadmium oxide*   | 1306-19-0  | 0.010               |
| 142 | Cadmium※   | 7440-43-9  | 0.010               |
| 143 | Dipentyl phthalate (DPP)   | 131-18-0   | 0.030               |
| 144 | Pentadecafluorooctanoic acid (PFOA)  | 335-67-1   | 0.030               |
| 145 | Cadmium sulphide*  | 1306-23-6  | 0.010               |
| 146 | Dihexyl phthalate  | 84-75-3    | 0.030               |
| 147 | Disodium 3,3'-[[1,1'-biphenyl]-4,4'-diylbis(azo)]bis(4-aminonaphthalene-1-sulphonate) (C.I. Direct Red 28)   | 573-58-0   | 0.030               |

**GUANGZHOU GRG METROLOGY & TEST CO., LTD.**

Address: No.31 Nanxiang Second Road, Science City, Huangpu District, Guangzhou, China  
Tel: 4006020999 Fax: +86-020-38698685 Website: <http://www.grgtest.com>

## TEST REPORT

CheckCode:469911  
Report No.:C202213022045E

| No. | Substance name   | CAS No.                   | Reporting Limit (%) |
|-----|--|---------------------------|---------------------|
| 148 | Disodium<br>4-amino-3-[[4'-[(2,4-diaminophenyl)azo][1,1'-biphenyl]-4-yl]azo]<br>-5-hydroxy-6-(phenylazo)naphthalene-2,7-disulphonate (C.I. Direct Black 38)  | 1937-37-7                 | 0.030               |
| 149 | Imidazolidine-2-thione (2-imidazoline-2-thiol)   | 96-45-7                   | 0.030               |
| 150 | Lead di(acetate) *   | 301-04-2                  | 0.010               |
| 151 | Trixylyl phosphate   | 25155-23-1                | 0.030               |
| 152 | 1,2-Benzenedicarboxylic acid, dihexyl ester, branched and linear   | 68515-50-4                | 0.030               |
| 153 | Cadmium chloride*  | 10108-64-2                | 0.010               |
| 154 | Sodium perborate, perboric acid, sodium salt*  | ---                       | 0.010               |
| 155 | Sodium peroxometaborate*   | 7632-04-4                 | 0.010               |
| 156 | 2-(2H-benzotriazol-2-yl)-4,6-ditertpentylphenol (UV-328)   | 25973-55-1                | 0.030               |
| 157 | 2-benzotriazol-2-yl-4,6-di-tert-butylphenol (UV-320)   | 3846-71-7                 | 0.030               |
| 158 | 2-ethylhexyl<br>10-ethyl-4,4-dioctyl-7-oxo-8-oxa-3,5-dithia-4-stannatetradecanoate (DOTE)  | 15571-58-1                | 0.030               |
| 159 | Reaction mass of 2-ethylhexyl<br>10-ethyl-4,4-dioctyl-7-oxo-8-oxa-3,5-dithia-4-stannatetradecanoate and 2-ethylhexyl<br>10-ethyl-4-[[2-[(2-ethylhexyl)oxy]-2-oxoethyl]thio]-4-octyl-7-oxo-8-oxa-3,5-dithia-4-stannatetradecanoate (reaction mass of DOTE and MOTE) | ---                       | 0.030               |
| 160 | Cadmium fluoride*  | 7790-79-6                 | 0.010               |
| 161 | Cadmium sulphate*  | 10124-36-4,<br>31119-53-6 | 0.010               |

**GUANGZHOU GRG METROLOGY & TEST CO., LTD.**

Address: No.31 Nanxiang Second Road, Science City, Huangpu District, Guangzhou, China  
Tel: 4006020999 Fax: +86-020-38698685 Website: <http://www.grgtest.com>



## TEST REPORT

CheckCode:469911  
Report No.:C202213022045E

| No. | Substance name  | CAS No.                               | Reporting Limit (%) |
|-----|---|---------------------------------------|---------------------|
| 162 | 1,2-benzenedicarboxylic acid, di-C6-10-alkyl esters, 1,2-benzenedicarboxylic acid, mixed decyl and hexyl and octyl diesters (with $\geq 0.3\%$ of dihexyl phthalate)  | 68515-51-5,<br>68648-93-1             | 0.030               |
| 163 | 5-sec-butyl-2-(2,4-dimethylcyclohex-3-en-1-yl)-5-methyl-1,3-dioxane [1],<br>5-sec-butyl-2-(4,6-dimethylcyclohex-3-en-1-yl)-5-methyl-1,3-dioxane [2]<br>[covering any of the individual stereoisomers of [1] and [2] or any combination thereof] | ---                                   | 0.030               |
| 164 | 1,3-propanesultone  | 1120-71-4                             | 0.030               |
| 165 | 2,4-di-tert-butyl-6-(5-chlorobenzotriazol-2-yl)phenol (UV-327)  | 3864-99-1                             | 0.030               |
| 166 | 2-(2H-benzotriazol-2-yl)-4-(tert-butyl)-6-(sec-butyl)phenol (UV-350)  | 36437-37-3                            | 0.030               |
| 167 | Nitrobenzene  | 98-95-3                               | 0.030               |
| 168 | Perfluorononan-1-oic-acid and its sodium and ammonium salts   | 375-95-1,<br>21049-39-8,<br>4149-60-4 | 0.030               |
| 169 | Benzo[def]chrysene (Benzo[a]pyrene)   | 50-32-8                               | 0.030               |
| 170 | 4,4'-isopropylidenediphenol (bisphenol A)   | 80-05-7                               | 0.030               |
| 171 | 4-heptylphenol, branched and linear   | ---                                   | 0.030               |
| 172 | Nonadecafluorodecanoic acid (PFDA) and its sodium and ammonium salts  | 3108-42-7,<br>335-76-2,<br>3830-45-3  | 0.030               |
| 173 | P-(1,1-dimethylpropyl)phenol  | 80-46-6                               | 0.030               |
| 174 | Perfluorohexane-1-sulfonic acid and its salts (PFHxS)   | ---                                   | 0.030               |
| 175 | 1,6,7,8,9,14,15,16,17,17,18,18-Dodecachloro-pentacyclo[12.2.1.16,9.0.2,13.0.5,10]octadeca-7,15-diene ("Dechlorane Plus"™) [covering any of its individual anti- and syn-isomers or any combination thereof]                                     | ---                                   | 0.030               |

**GUANGZHOU GRG METROLOGY & TEST CO., LTD.**

Address: No.31 Nanxiang Second Road, Science City, Huangpu District, Guangzhou, China  
Tel: 4006020999 Fax: +86-020-38698685 Website: <http://www.grgtest.com>

## TEST REPORT

CheckCode:469911  
Report No.:C202213022045E

| No. | Substance name   | CAS No.                   | Reporting Limit (%) |
|-----|--|---------------------------|---------------------|
| 176 | Benz[a]anthracene  | 56-55-3,<br>1718-53-2     | 0.030               |
| 177 | Cadmium nitrate*   | 10022-68-1,<br>10325-94-7 | 0.010               |
| 178 | Cadmium carbonate *  | 513-78-0                  | 0.010               |
| 179 | Cadmium hydroxide*   | 21041-95-2                | 0.010               |
| 180 | Chrysene   | 218-01-9,<br>1719-03-5    | 0.030               |
| 181 | Reaction products of<br>1,3,4-thiadiazolidine-2,5-dithione,<br>formaldehyde and 4-heptylphenol, branched<br>and linear (RP-HP) [with ≥0.1% w/w<br>4-heptylphenol, branched and linear] | ---                       | 0.030               |
| 182 | Benzene-1,2,4-tricarboxylic acid 1,2<br>anhydride (trimellitic anhydride) (TMA)  | 552-30-7                  | 0.030               |
| 183 | Dicyclohexyl phthalate (DCHP)  | 84-61-7                   | 0.030               |
| 184 | Benzo[ghi]perylene   | 191-24-2                  | 0.030               |
| 185 | Decamethylcyclotetrasiloxane (D5)  | 541-02-6                  | 0.030               |
| 186 | Disodium octaborate*   | 12008-41-2                | 0.010               |
| 187 | Dodecamethylcyclohexasiloxane(D6)  | 540-97-6                  | 0.030               |
| 188 | Ethylenediamine  | 107-15-3                  | 0.030               |
| 189 | Lead※  | 7439-92-1                 | 0.005               |
| 190 | Octamethylcyclotetrasiloxane (D4)  | 556-67-2                  | 0.030               |
| 191 | Terphenyl hydrogenated   | 61788-32-7                | 0.030               |
| 192 | 2,2-bis(4'-hydroxyphenyl)-4-methylpentane  | 6807-17-6                 | 0.030               |
| 193 | Benzo[k]fluoranthene   | 207-08-9                  | 0.030               |
| 194 | Fluoranthene   | 206-44-0                  | 0.030               |
| 195 | Phenanthrene   | 85-01-8                   | 0.030               |
| 196 | Pyrene   | 129-00-0                  | 0.030               |

**GUANGZHOU GRG METROLOGY & TEST CO., LTD.**

Address: No.31 Nanxiang Second Road, Science City, Huangpu District, Guangzhou, China  
Tel: 4006020999 Fax: +86-020-38698685 Website: <http://www.grgtest.com>

## TEST REPORT

CheckCode:469911  
Report No.:C202213022045E

| No. | Substance name   | CAS No.   | Reporting Limit (%) |
|-----|--|---|---------------------|
| 197 | 1,7,7-trimethyl-3-(phenylmethylene)bicyclo[2.2.1]heptan-2-one  | 15087-24-8  | 0.030               |
| 198 | Tris(4-nonylphenyl, branched and linear) phosphite (TNPP) with $\geq 0.1\%$ w/w of 4-nonylphenol, branched and linear (4-NP)   | ---   | 0.030               |
| 199 | 4-tert-butylphenol   | 98-54-4   | 0.030               |
| 200 | 2-methoxyethyl acetate   | 110-49-6  | 0.030               |
| 201 | 2,3,3,3-tetrafluoro-2-(heptafluoropropoxy)propionic acid, its salts and its acyl halides (covering any of their individual isomers and combinations thereof)   | ---   | 0.030               |
| 202 | 2-benzyl-2-dimethylamino-4'-morpholinobutyrophenone  | 119313-12-1                                       | 0.030               |
| 203 | 2-methyl-1-(4-methylthiophenyl)-2-morpholinopropan-1-one   | 71868-10-5  | 0.030               |
| 204 | Diisohexyl phthalate   | 71850-09-4  | 0.030               |
| 205 | Perfluorobutane sulfonic acid (PFBS) and its salts   | ---   | 0.030               |
| 206 | 1-vinylimidazole   | 1072-63-5   | 0.030               |
| 207 | 2-methylimidazole  | 693-98-1  | 0.030               |
| 208 | Dibutylbis(pentane-2,4-dionato-O,O')tin  | 22673-19-4  | 0.030               |
| 209 | Butyl 4-hydroxybenzoate(Butylparaben)  | 94-26-8   | 0.030               |
| 210 | Bis(2-(2-methoxyethoxy)ethyl)ether   | 143-24-8  | 0.030               |
| 211 | Dioctyltin dilaurate, stannane, dioctyl-, bis(coco acyloxy) derivs., and any other stannane, dioctyl-, bis(fatty acyloxy) derivs. wherein C12 is the predominant carbon number of the fatty acyloxy moiety | ---   | 0.030               |
| 212 | 1,4-dioxane  | 123-91-1  | 0.030               |
| 213 | 2,2-bis(bromomethyl)propane-1,3-diol (BMP); 2,2-dimethylpropan-1-ol, tribromo derivative/3-bromo-2,2-bis(bromomethyl)-1-propanol (TBNPA); 2,3-dibromo-1-propanol (2,3-DBPA)                                | 3296-90-0,<br>36483-57-5<br>1522-92-5,<br>96-13-9 | 0.030               |

## GUANGZHOU GRG METROLOGY &amp; TEST CO., LTD.

Address: No.31 Nanxiang Second Road, Science City, Huangpu District, Guangzhou, China  
Tel: 4006020999 Fax: +86-020-38698685 Website: <http://www.grgtest.com>

## TEST REPORT

CheckCode:469911  
Report No.:C202213022045E

| No. | Substance name  | CAS No.     | Reporting Limit (%) |
|-----|---|-------------|---------------------|
| 214 | 2-(4-tert-butylbenzyl)propionaldehyde and its individual stereoisomers  | ---         | 0.030               |
| 215 | 4,4'-(1-methylpropylidene)bisphenol   | 77-40-7     | 0.030               |
| 216 | Glutaral  | 111-30-8    | 0.030               |
| 217 | Medium-chain chlorinated paraffins (MCCP) [UVCB substances consisting of more than or equal to 80% linear chloroalkanes with carbon chain lengths within the range from C14 to C17]           | ---         | 0.030               |
| 218 | Orthoboric acid, sodium salt*   | ---         | 0.010               |
| 219 | Phenol, alkylation products (mainly in para position) with C12-rich branched or linear alkyl chains from oligomerisation, covering any individual isomers and/ or combinations thereof (PDDP) | ---         | 0.030               |
| 220 | (±)-1,7,7-trimethyl-3-[(4-methylphenyl)methylene]bicyclo[2.2.1]heptan-2-one covering any of the individual isomers and/or combinations thereof (4-MBC)  | ---         | 0.030               |
| 221 | 6,6'-di-tert-butyl-2,2'-methylenedi-p-cresol  | 119-47-1    | 0.030               |
| 222 | S-(tricyclo[5.2.1.0'2,6]deca-3-en-8(or 9)-yl) O-(isopropyl or isobutyl or 2-ethylhexyl) O-(isopropyl or isobutyl or 2-ethylhexyl) phosphorodithioate  | 255881-94-8 | 0.030               |
| 223 | Tris(2-methoxyethoxy)vinylsilane  | 1067-53-4   | 0.030               |
| 224 | N-(hydroxymethyl)acrylamide   | 924-42-5    | 0.030               |

### 2.1 Substances to propose as Substances of Very High Concern(SVHC):

| No. | Substance name | CAS No.  | Reporting Limit (%) |
|-----|----------------|----------|---------------------|
| 1   | Resorcinol     | 108-46-3 | 0.030               |

### GUANGZHOU GRG METROLOGY & TEST CO., LTD.

Address: No.31 Nanxiang Second Road, Science City, Huangpu District, Guangzhou, China  
Tel: 4006020999 Fax: +86-020-38698685 Website: <http://www.grgtest.com>

# TEST REPORT

CheckCode:469911  
Report No.:C202213022045E

## Annex 2 - REACH obligation:

### 1. Concerning article(s):

Communication:

Article 33 of Regulation (EC) No 1907/2006 requires supplier of an article containing a substance meeting the criteria in Article 57 and identified in accordance with Article 59(1) in a concentration above 0.1% weight by weight (w/w) shall provide the recipient of the article with sufficient information, available to the supplier, to allow safe use of the article including, as a minimum, the name of that substance in the Candidate List.

Notification:

In accordance with Regulation (EC) No 1907/2006, any EU producer or importer of articles shall notify ECHA, in accordance with paragraph 4 of Article 7, if a substance meets the criteria in Article 57 and is identified in accordance with Article 59(1) of the Regulation, if (a) the substance in the Candidate List is present in those articles in quantities totaling over one tonne per producer or importer per year; and (b) the substance in the Candidate List is present in those articles above a concentration of 0.1% weight by weight (w/w).

### 2. Concerning material(s):

Test results in this report are based on the tested sample. This report refers to testing result of tested sample submitted as homogenous material(s). In case such material is being used to compose an article, the results indicated in this report may not represent SVHC concentration in such article. If this report refers to testing result of composite material group by equal weight proportion, the material in each composite test group may come from more than one article.

If the sample is a substance or mixture, and it directly exports to EU, client has the obligation to comply with the supply chain communication obligation under Article 31 of Regulation (EC) No. 1907/2006 and the conditions of Authorization of substance of very high concern included in the Annex XIV of the Regulation (EC) No. 1907/2006.

### 3. Concerning substance and preparation:

If a SVHC is found over 0.1% (w/w) and/or the specific concentration limit which is set in Regulation (EC) No 1272/2008 and its amendments, client is suggested to prepare a Safety Data Sheet (SDS) against the SVHC to comply with the supply chain communication obligation under Regulation (EC) No 1907/2006, in which:

- a substance that is classified as hazardous under the CLP Regulation (EC) No 1272/2008.
- a mixture that is classified as hazardous under the CLP Regulation (EC) No 1272/2008, when it contains a substance with concentration equal to, or greater than the classification limit as set in Regulation (EC) No. 1272/2008; or

## GUANGZHOU GRG METROLOGY & TEST CO., LTD.

Address: No.31 Nanxiang Second Road, Science City, Huangpu District, Guangzhou, China  
Tel: 4006020999 Fax: +86-020-38698685 Website: <http://www.grgtest.com>

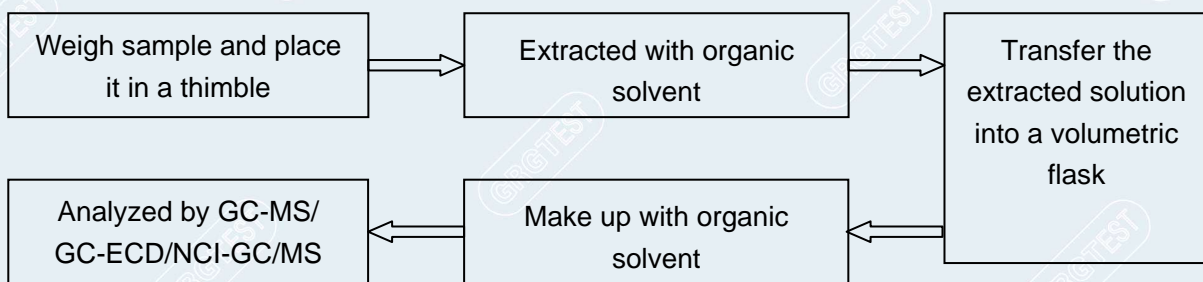
# TEST REPORT

CheckCode:469911  
Report No.:C202213022045E

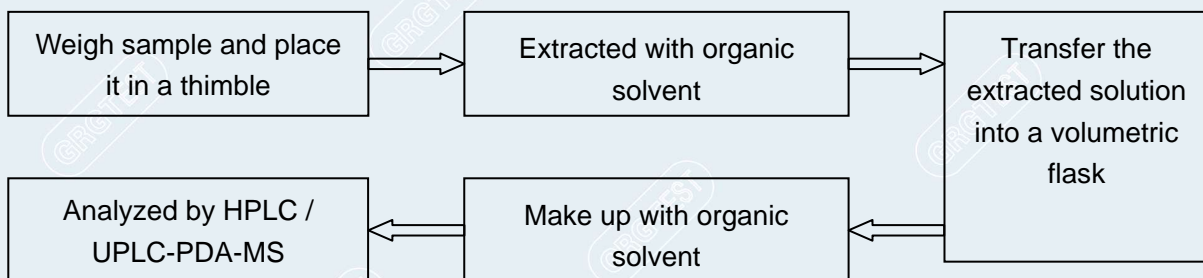
- a mixture is not classified as hazardous under the CLP Regulation (EC) No 1272/2008, but contains either:

- (a) a substance posing human health or environmental hazards in an individual concentration of  $\geq 1\%$  by weight for mixtures that are solid or liquids (i.e., non-gaseous mixtures) or  $\geq 0.2\%$  by volume for gaseous mixtures; or
- (b) a substance that is PBT, or vPvB in an individual concentration of  $\geq 0.1\%$  by weight for mixtures that are solid or liquids (i.e., non-gaseous mixtures); or
- (c) a substance on the SVHC candidate list (for reasons other than those listed above), in an individual concentration of  $\geq 0.1\%$  by weight for non-gaseous mixtures; or
- (d) a substance for which there are Europe-wide workplace exposure limits.

## Test Process (1):



## Test Process (2):



# TEST REPORT

CheckCode:469911  
Report No.:C202213022045E

Test Process (3):

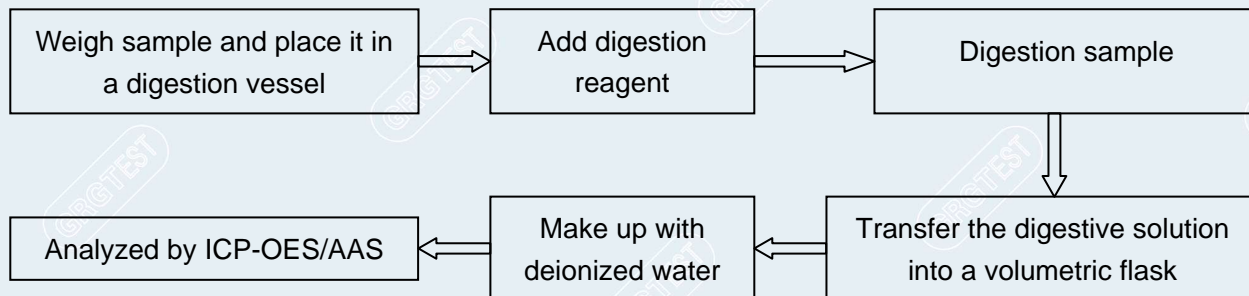
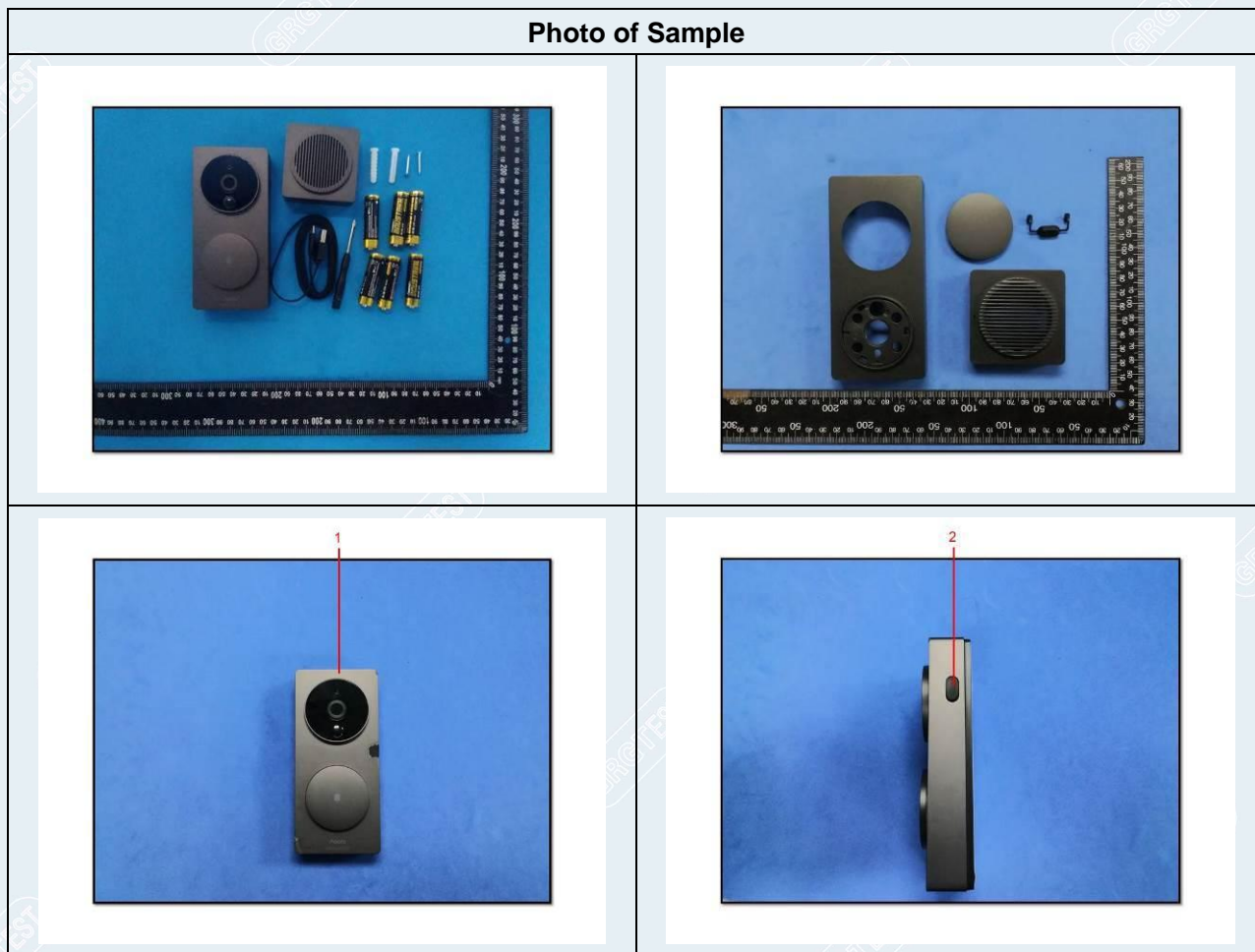
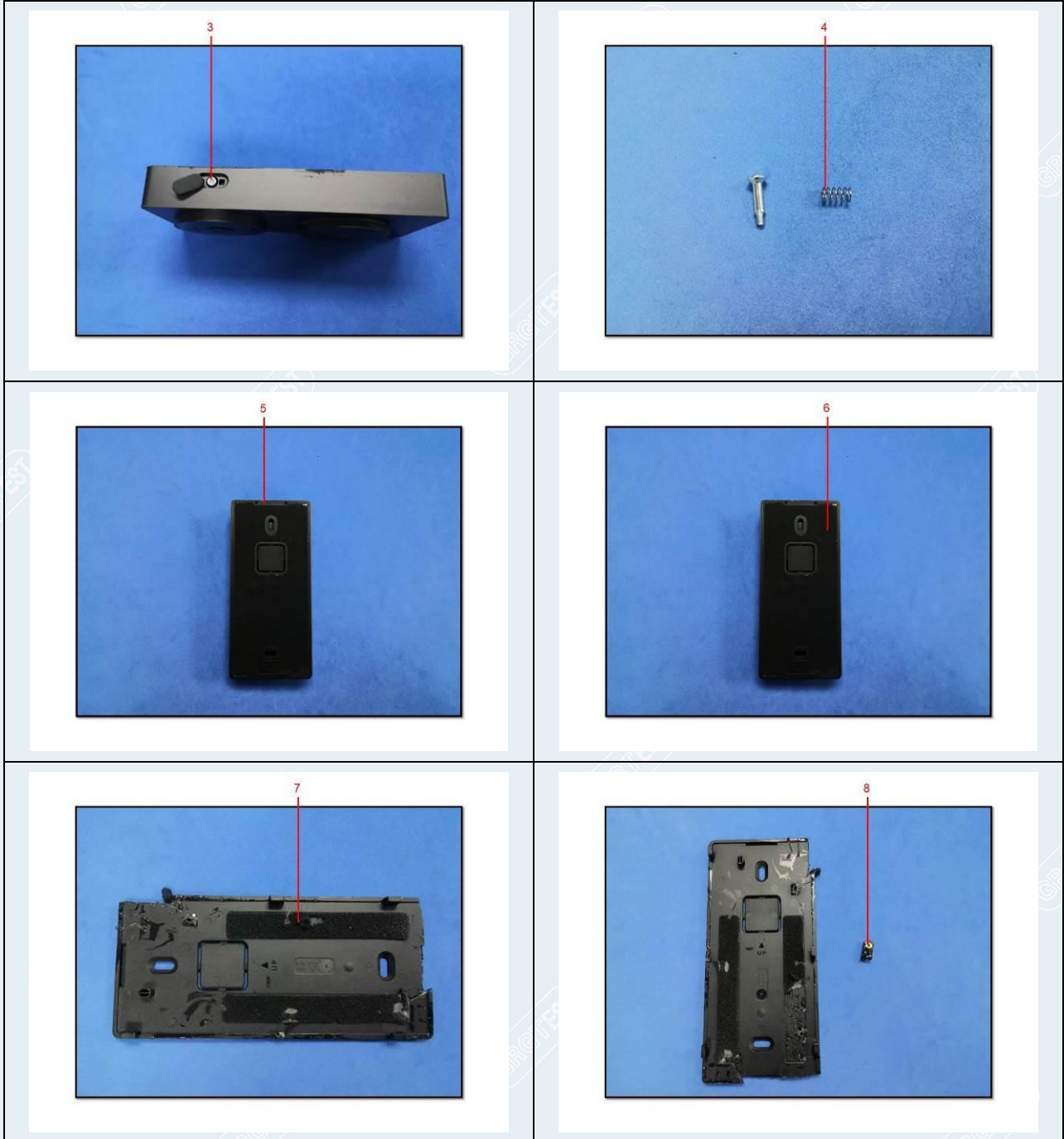


Photo of Sample



# TEST REPORT

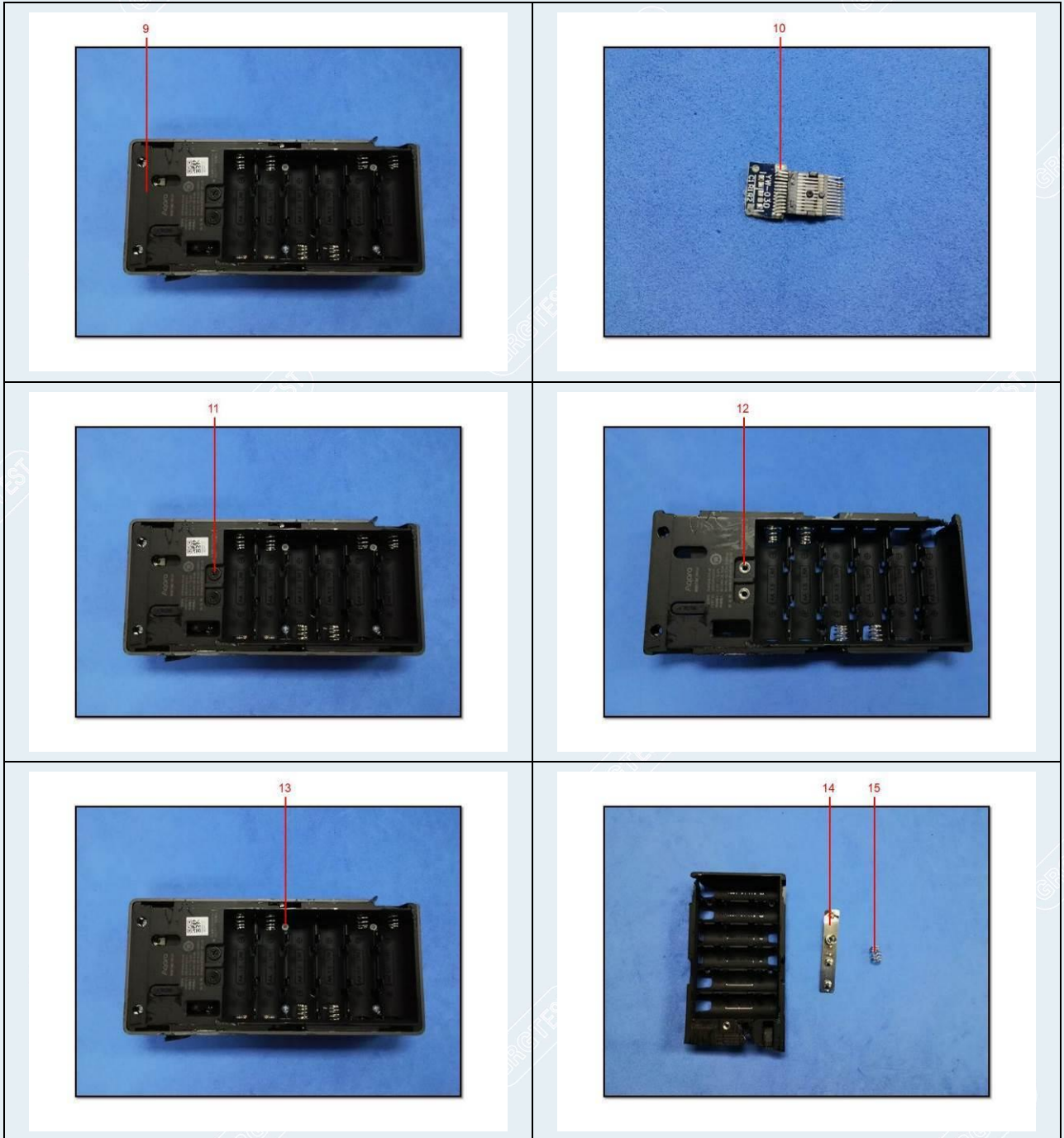
CheckCode:469911  
Report No.:C202213022045E





# TEST REPORT

CheckCode:469911  
Report No.:C202213022045E



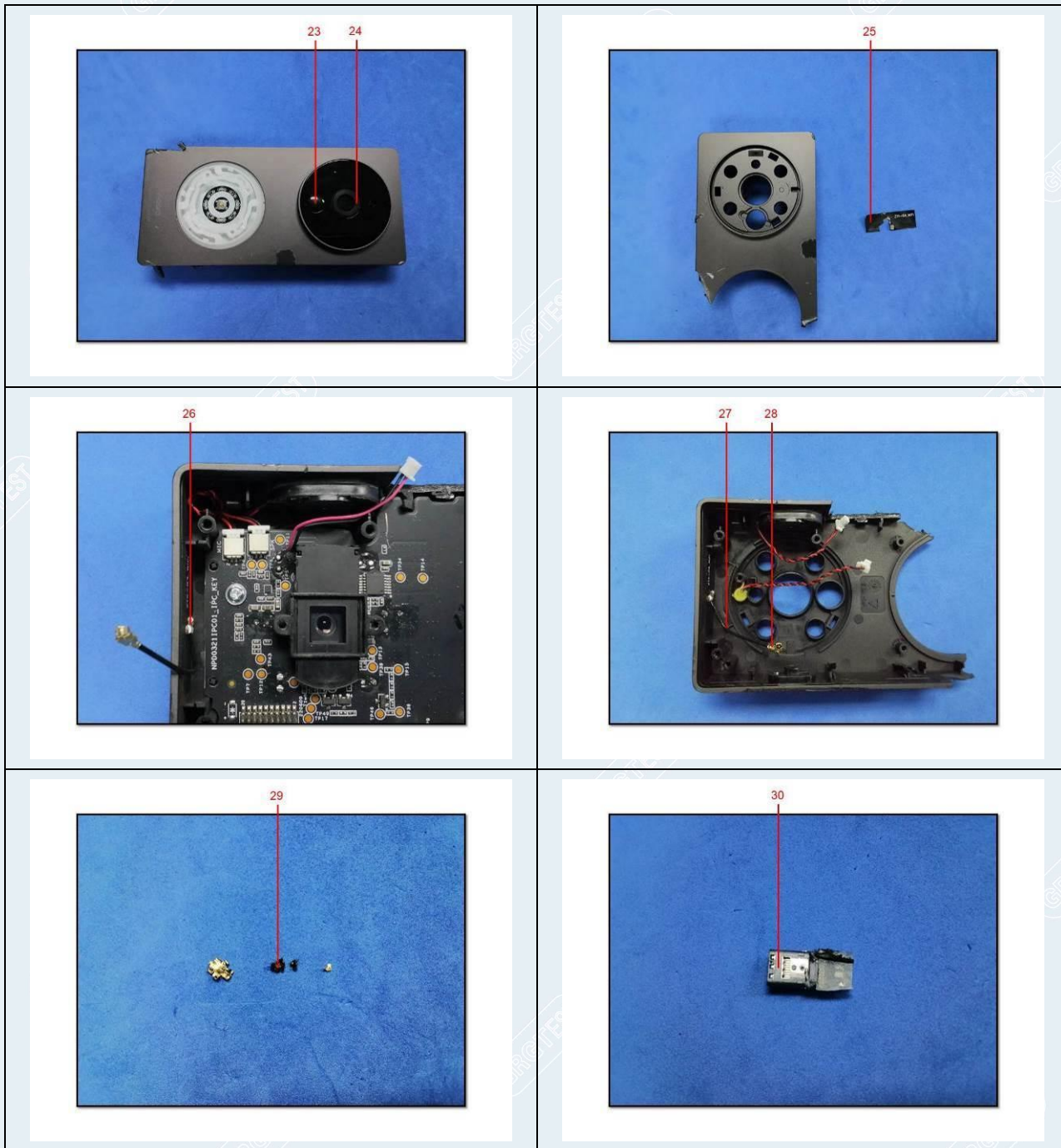
# TEST REPORT

CheckCode:469911  
Report No.:C202213022045E



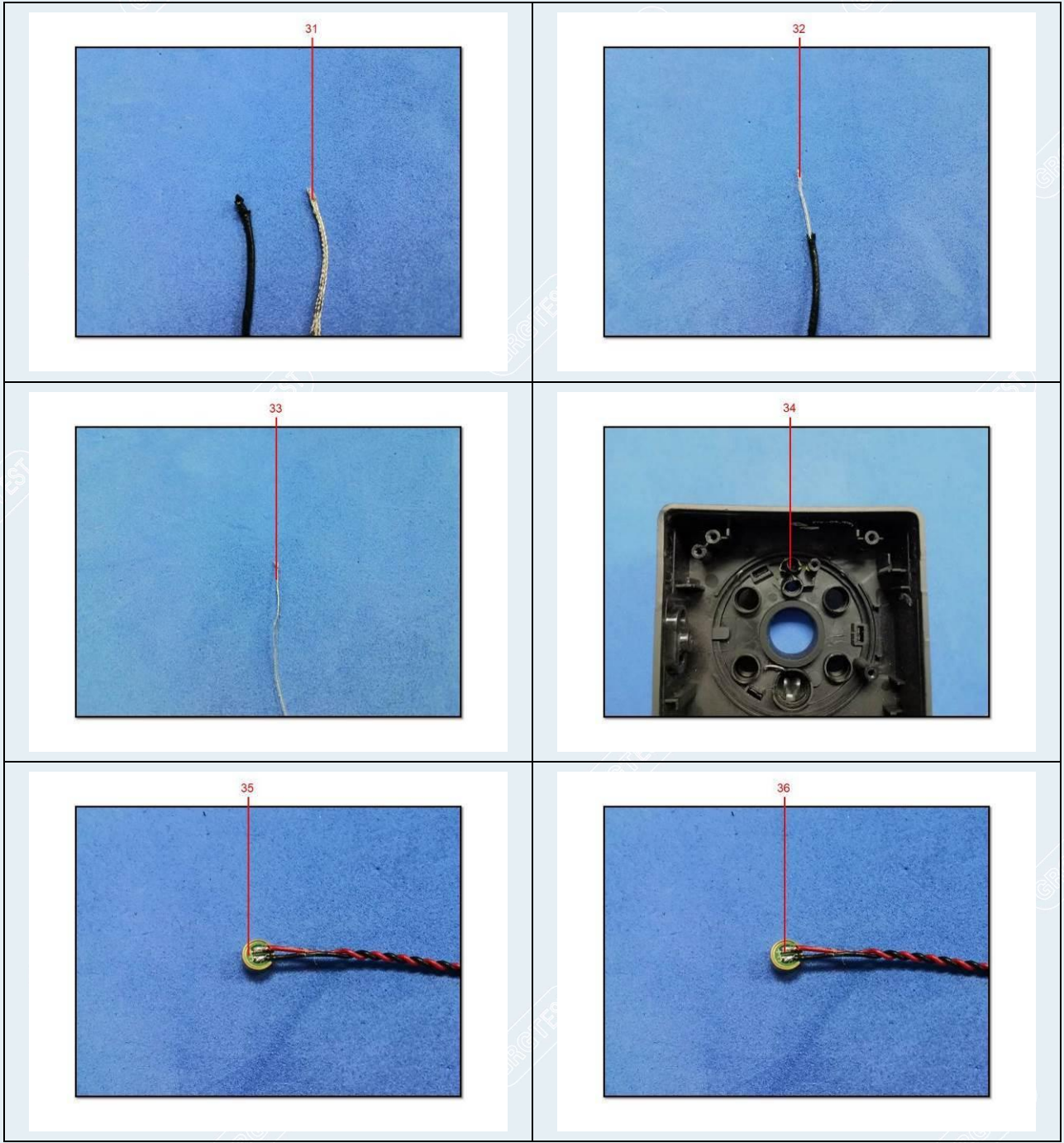
# TEST REPORT

CheckCode:469911  
Report No.:C202213022045E



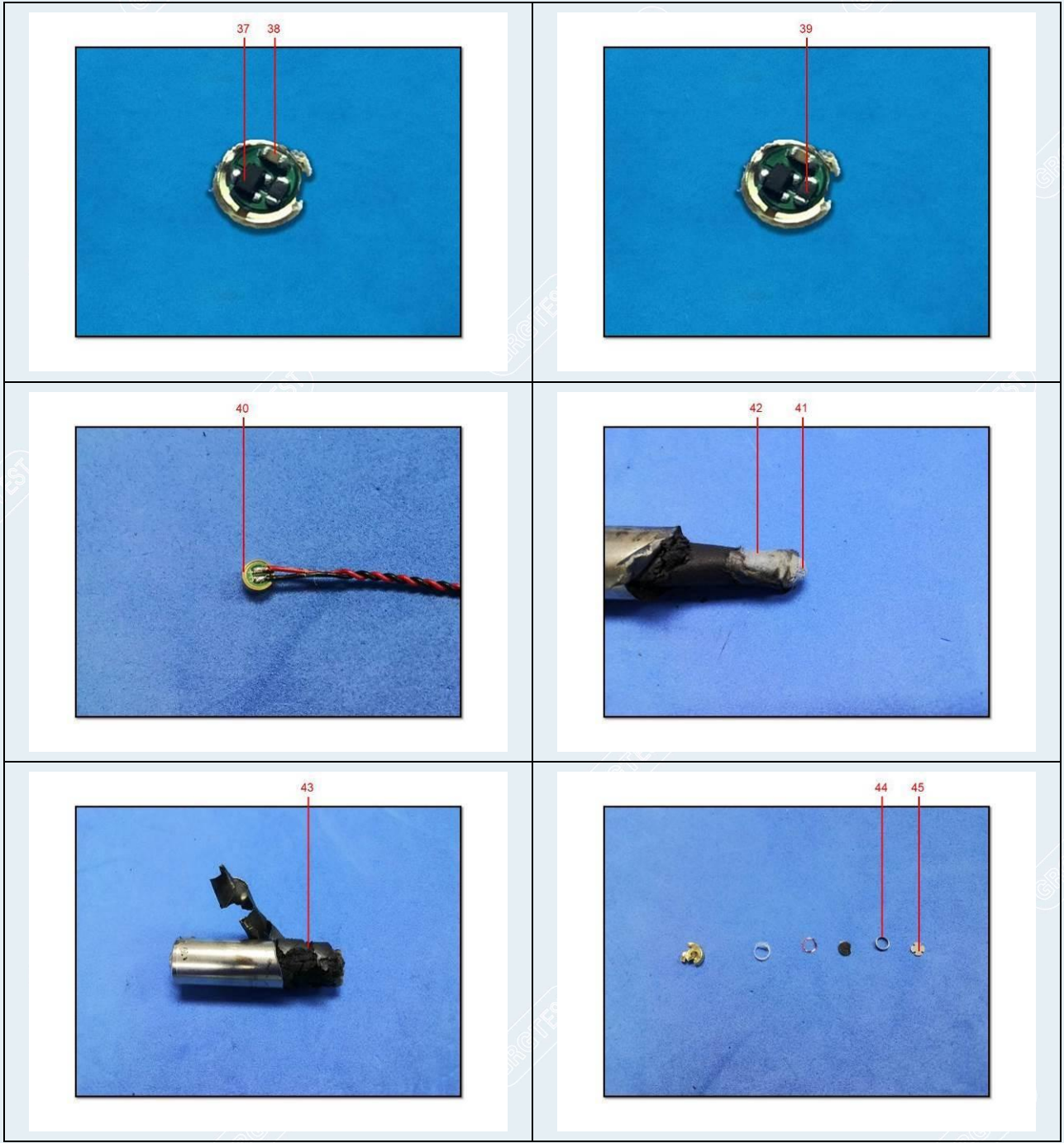
# TEST REPORT

CheckCode:469911  
Report No.:C202213022045E



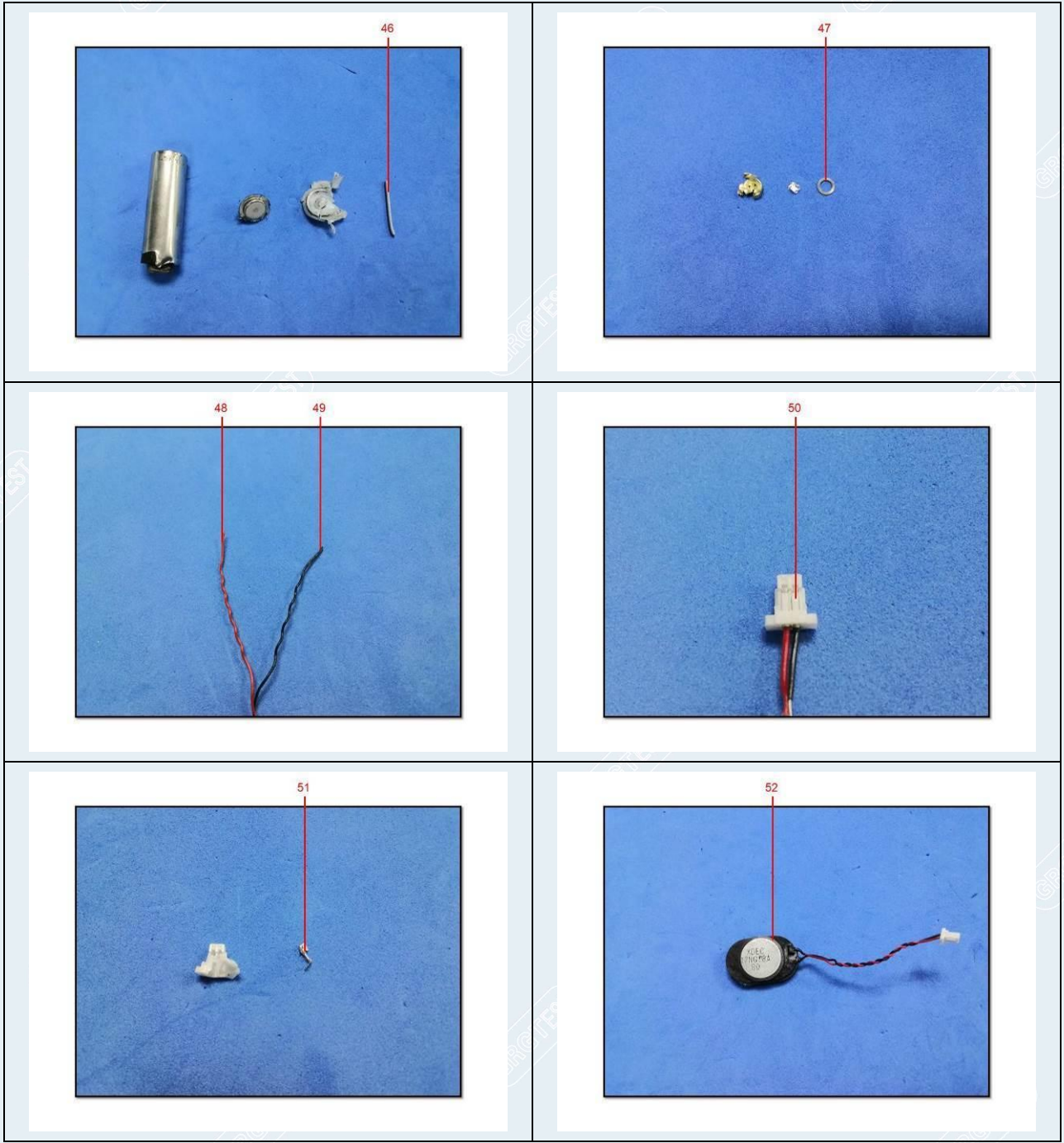
# TEST REPORT

CheckCode:469911  
Report No.:C202213022045E



# TEST REPORT

CheckCode:469911  
Report No.:C202213022045E



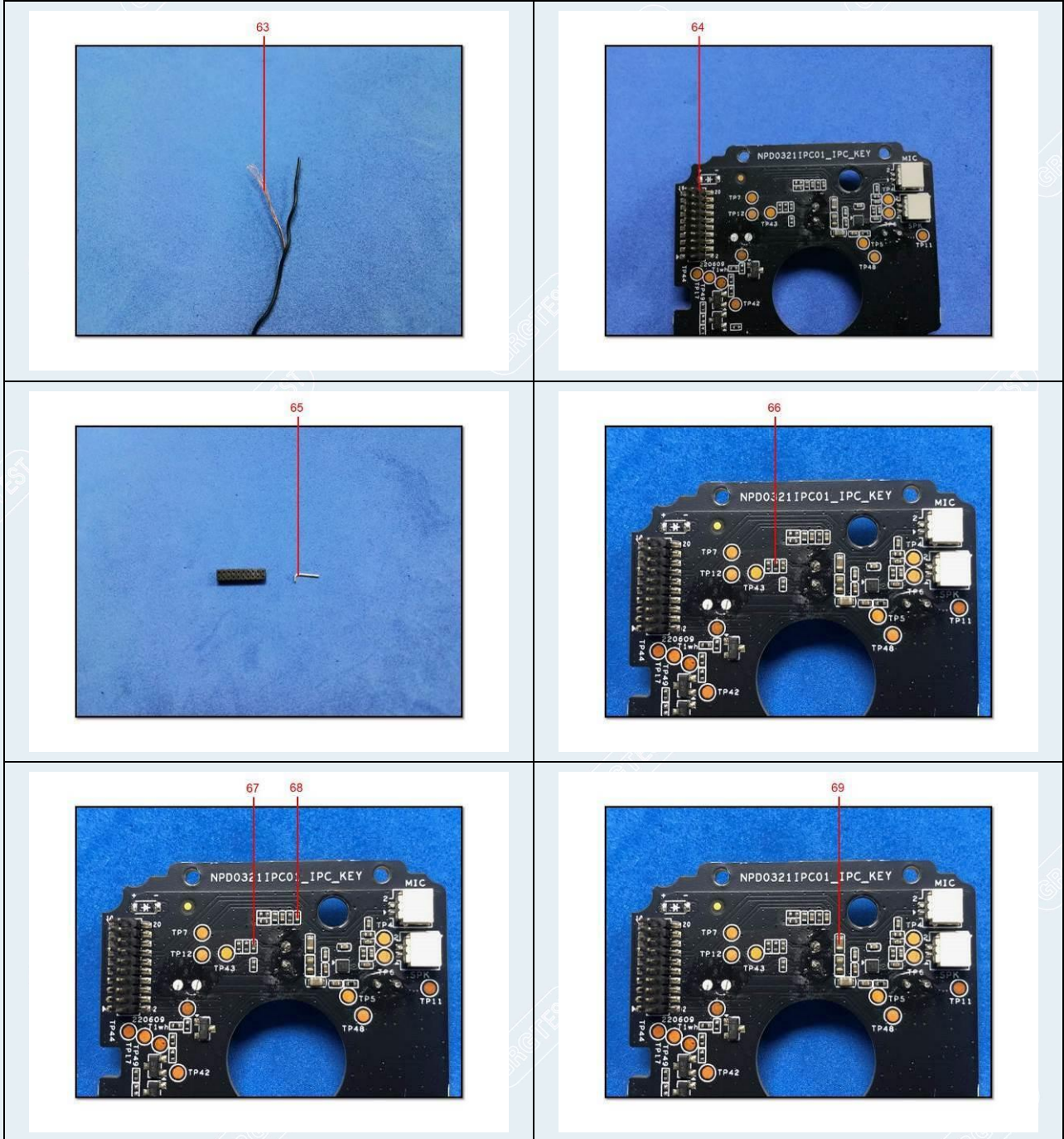
# TEST REPORT

CheckCode:469911  
Report No.:C202213022045E



# TEST REPORT

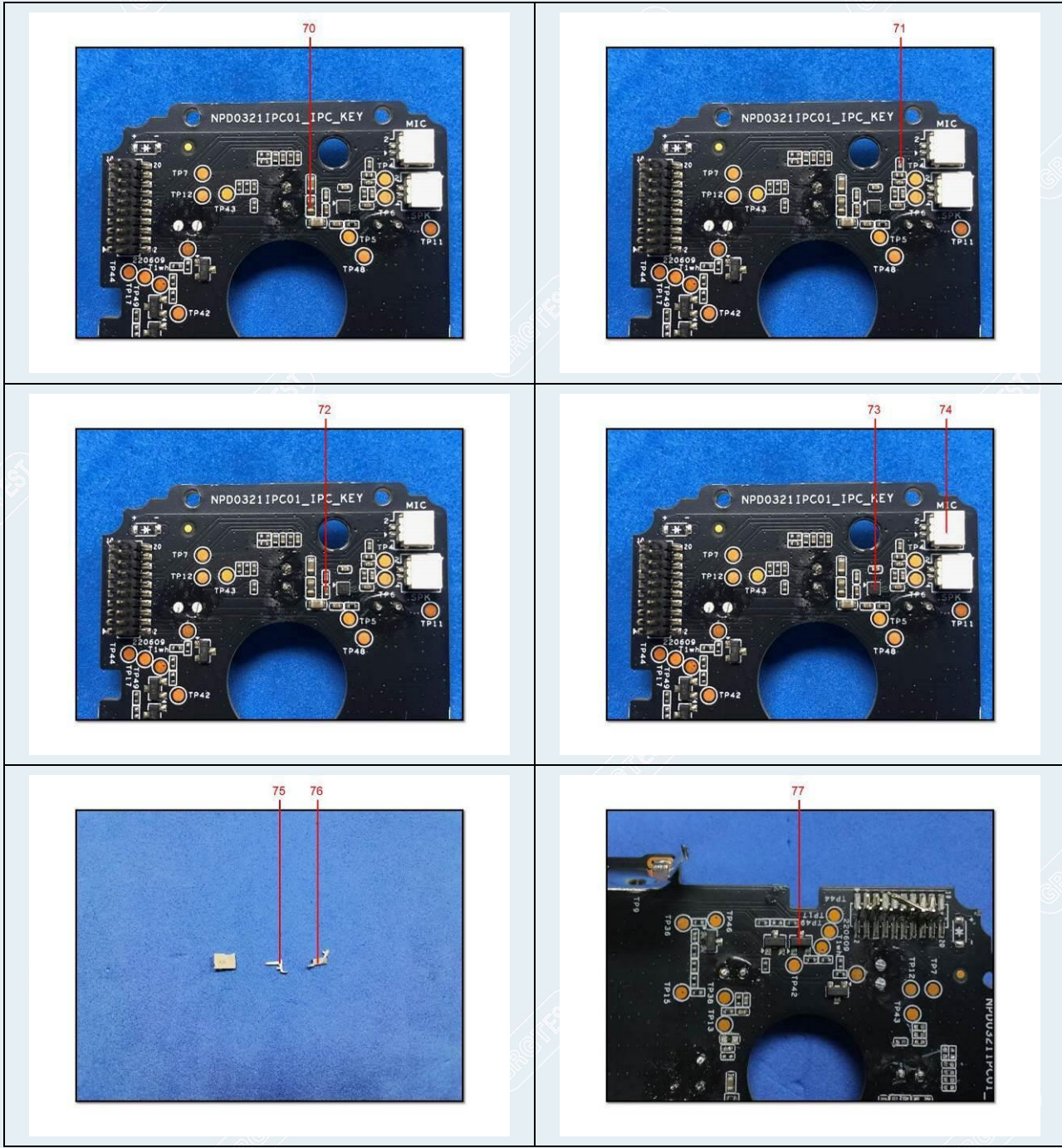
CheckCode:469911  
Report No.:C202213022045E





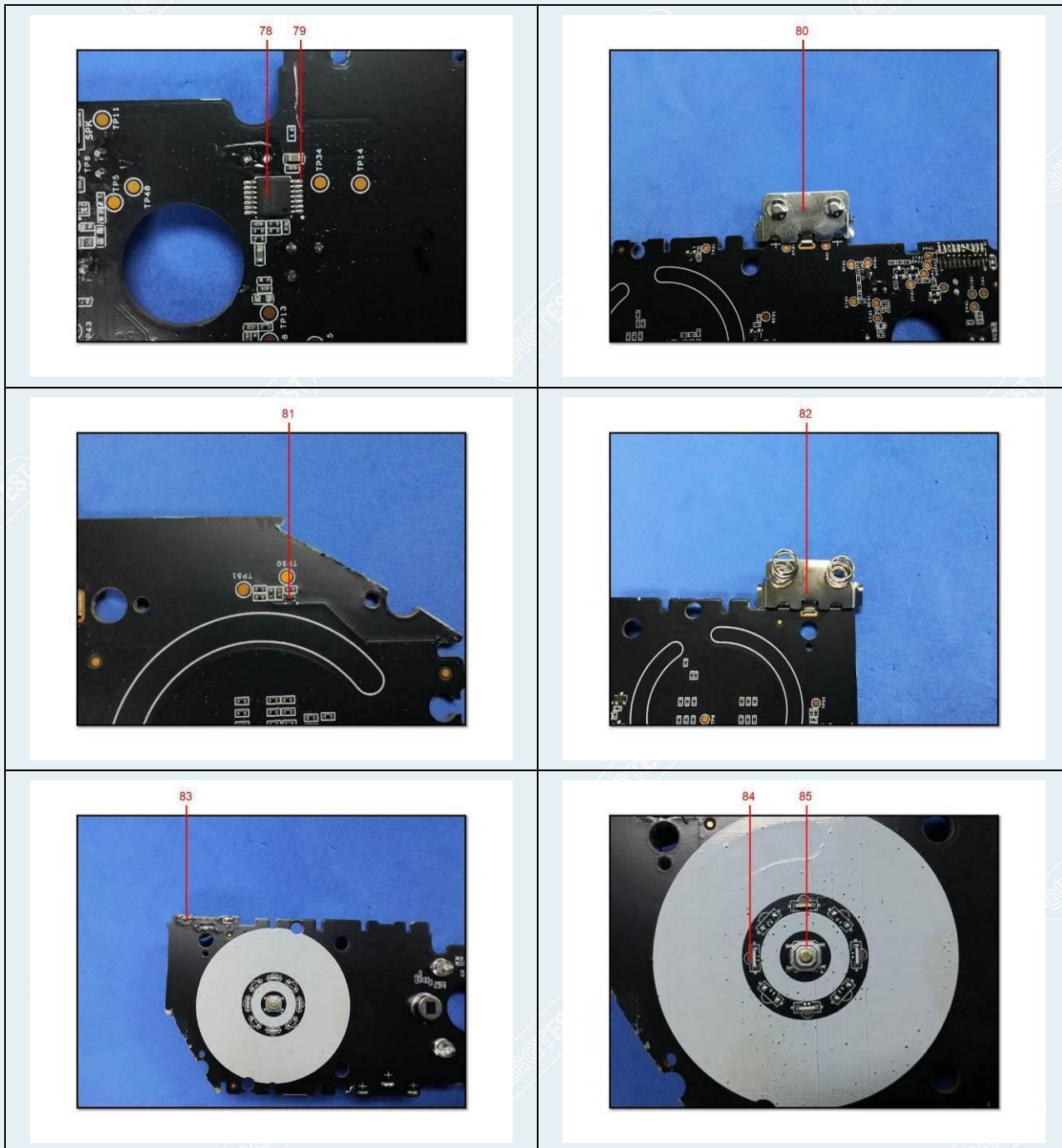
# TEST REPORT

CheckCode:469911  
Report No.:C202213022045E



# TEST REPORT

CheckCode:469911  
Report No.:C202213022045E



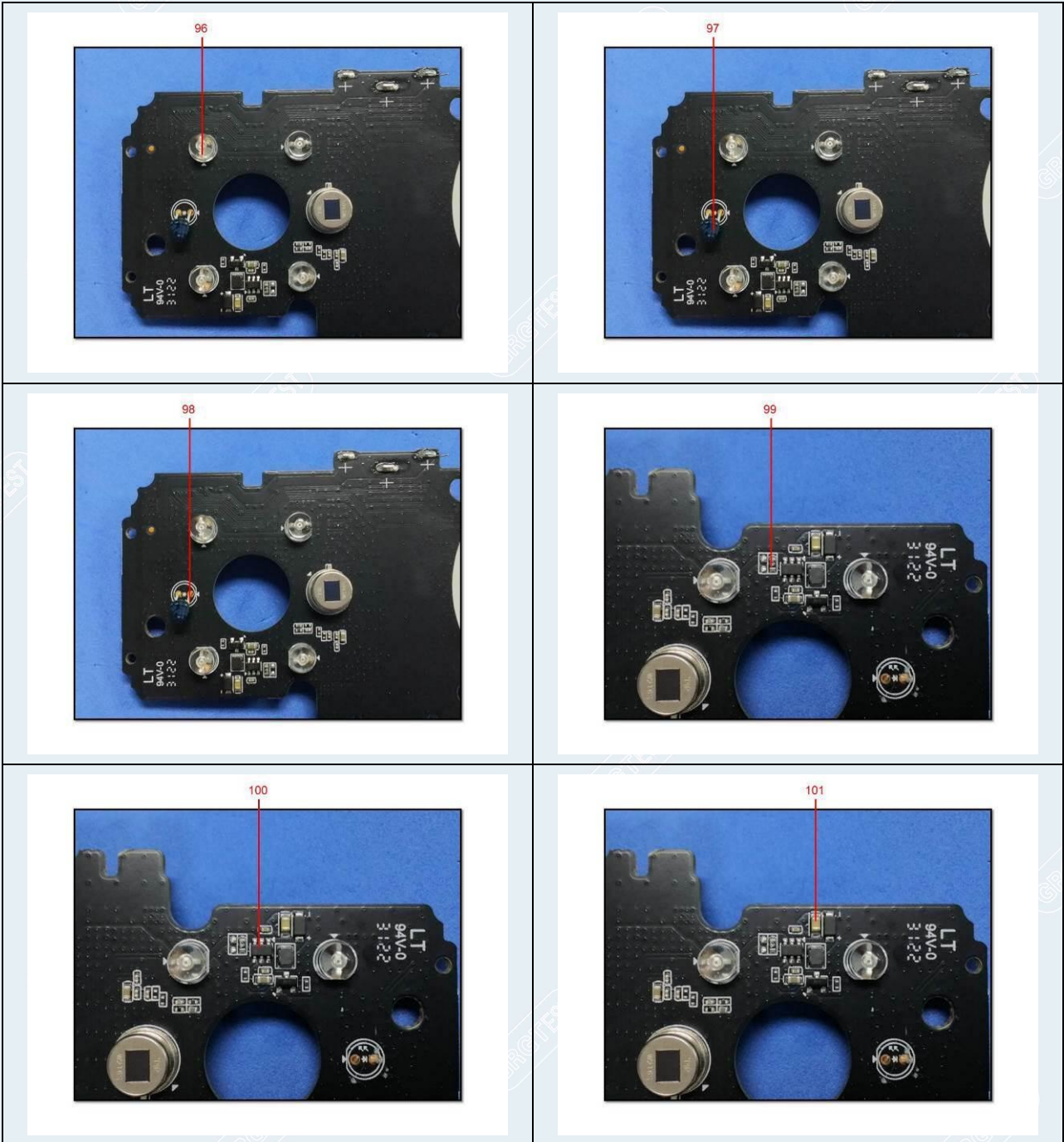
# TEST REPORT

CheckCode:469911  
Report No.:C202213022045E



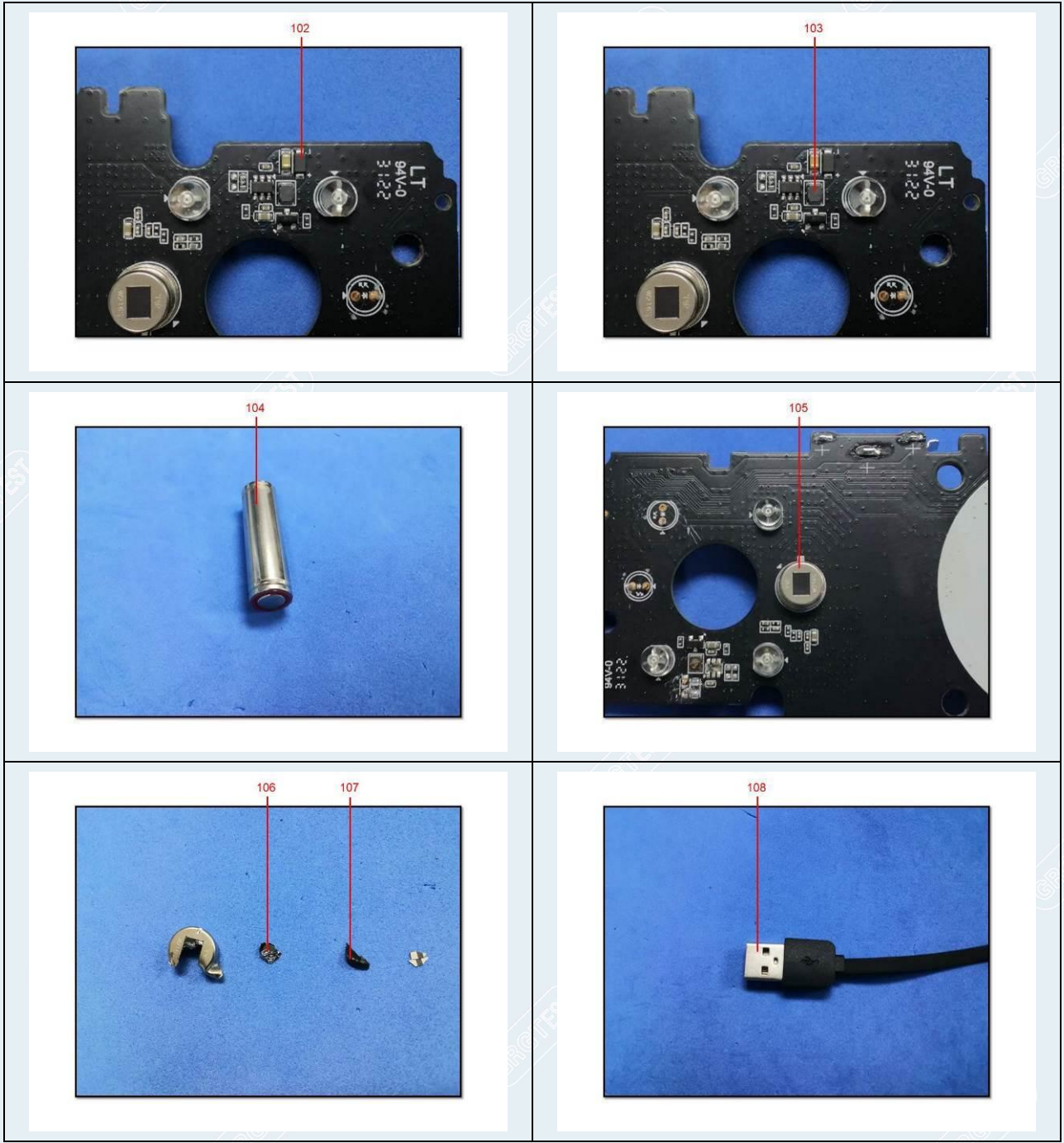
# TEST REPORT

CheckCode:469911  
Report No.:C202213022045E



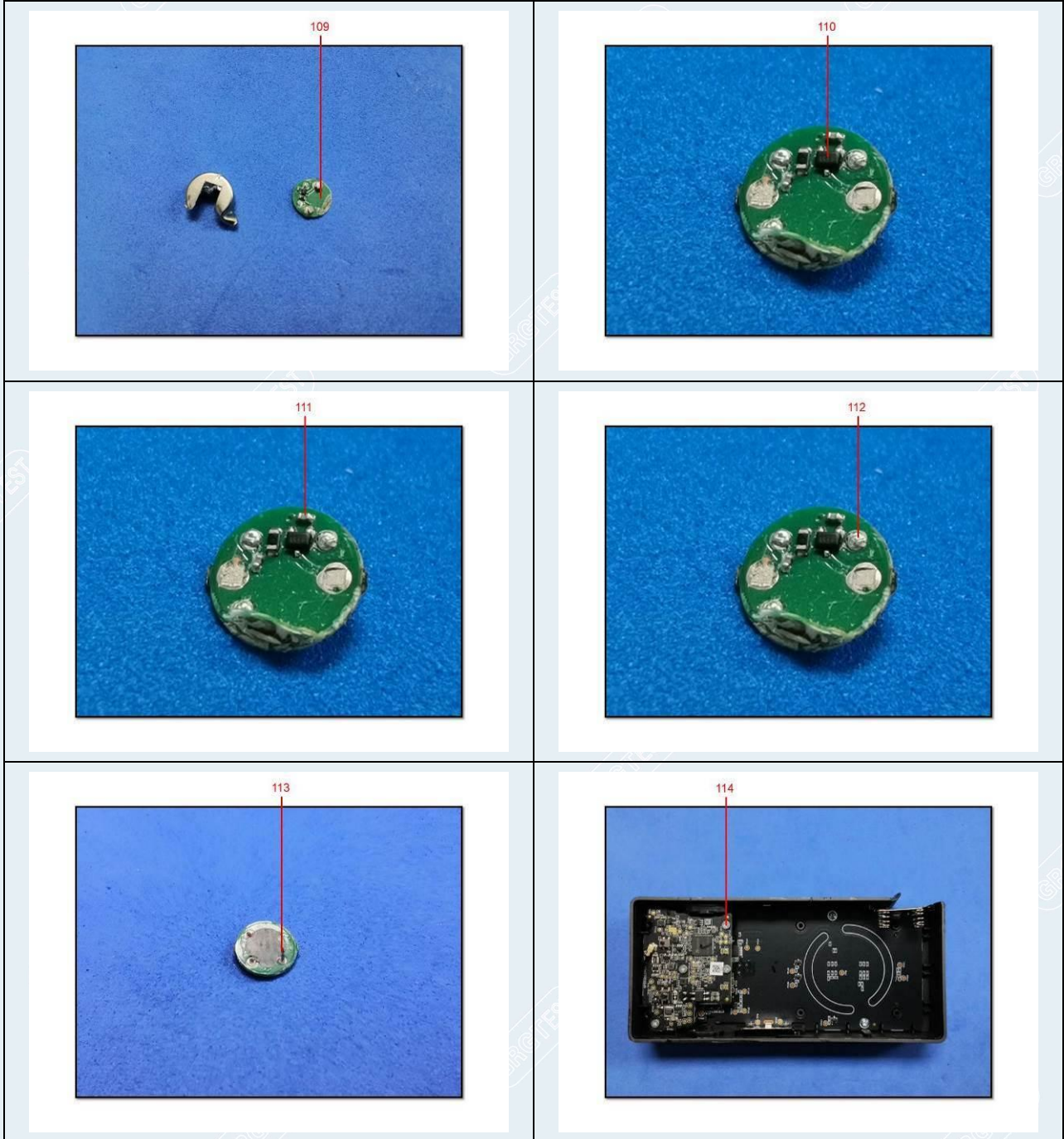
# TEST REPORT

CheckCode:469911  
Report No.:C202213022045E



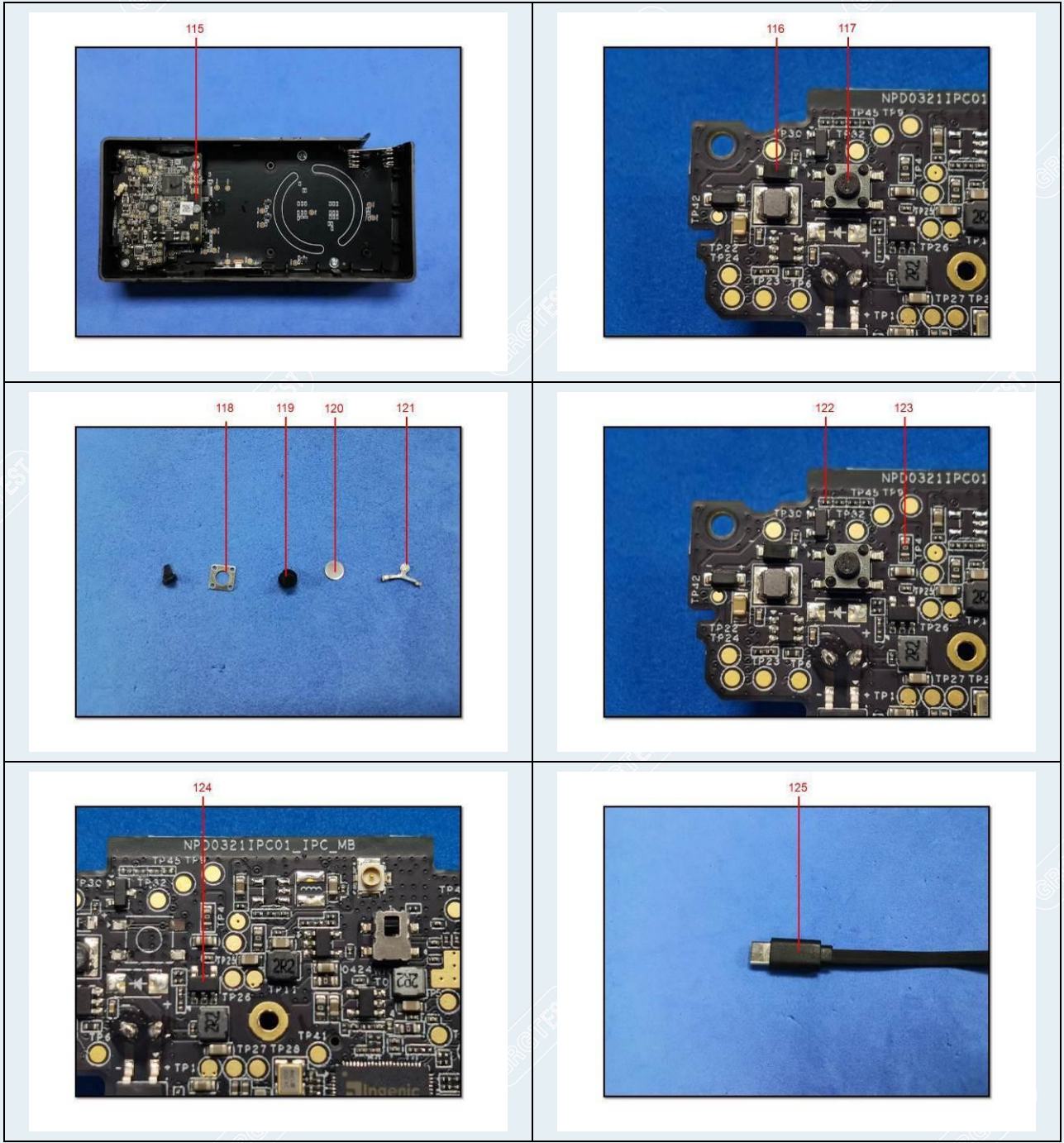
# TEST REPORT

CheckCode:469911  
Report No.:C202213022045E



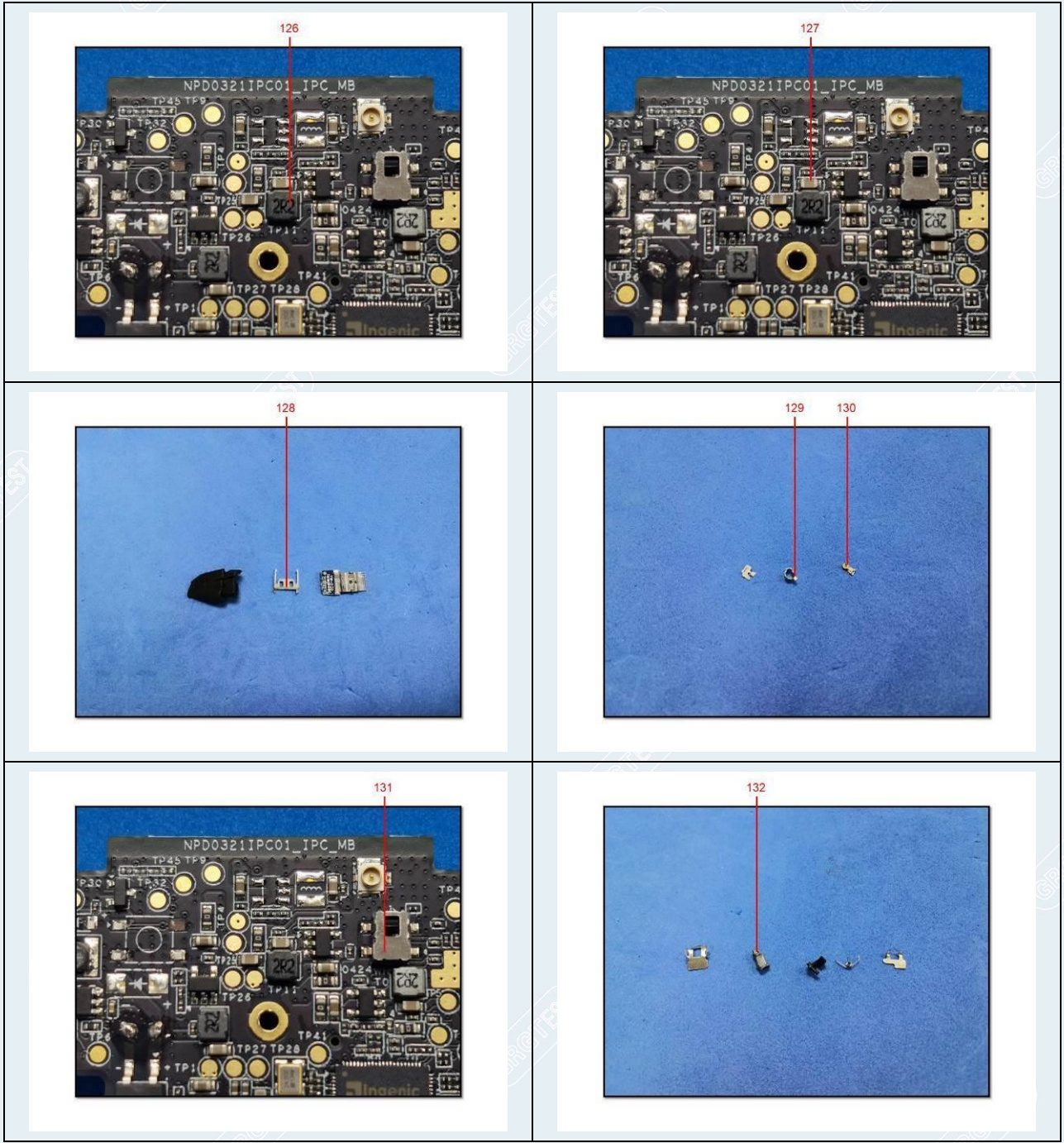
# TEST REPORT

CheckCode:469911  
Report No.:C202213022045E



# TEST REPORT

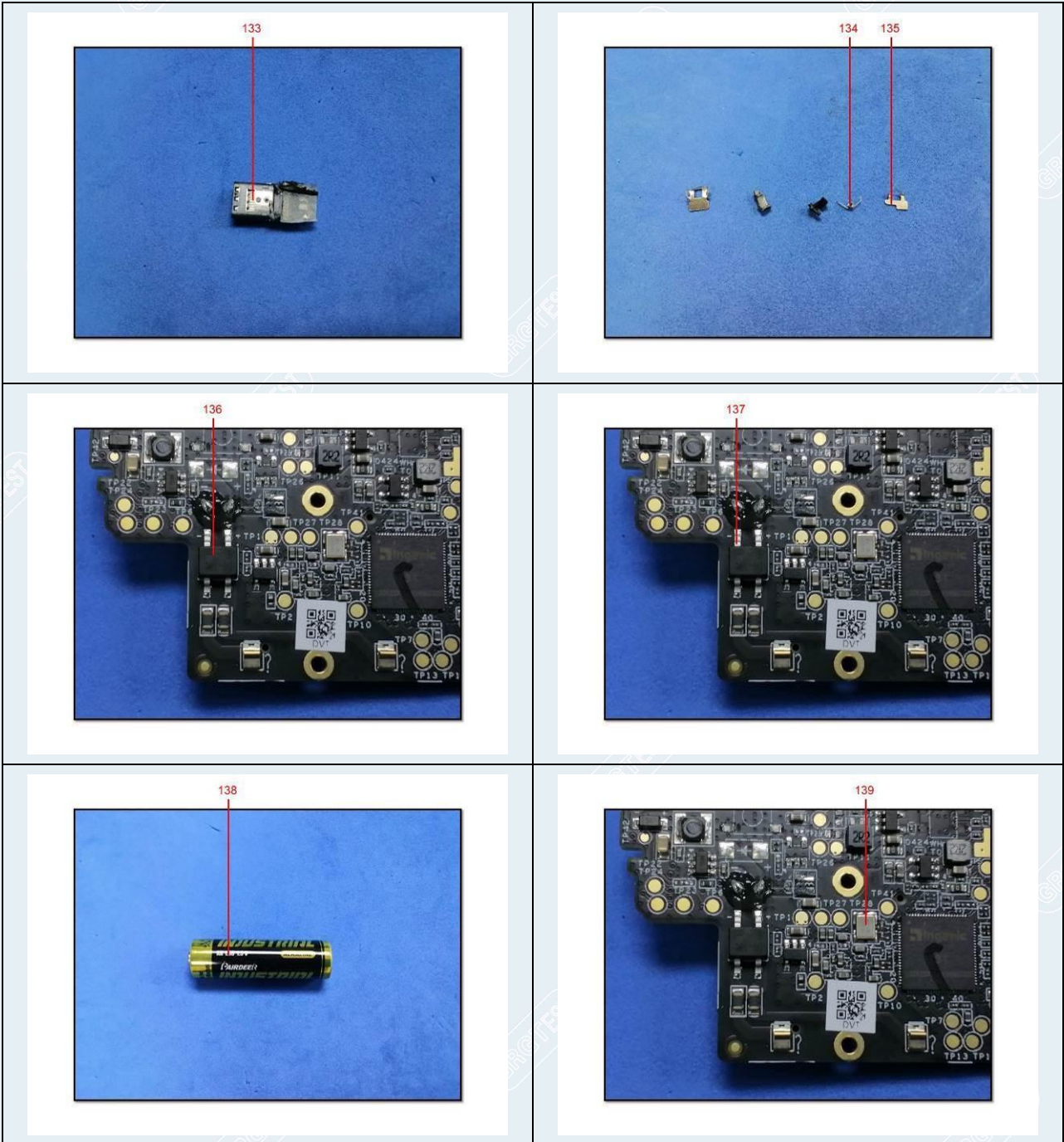
CheckCode:469911  
Report No.:C202213022045E





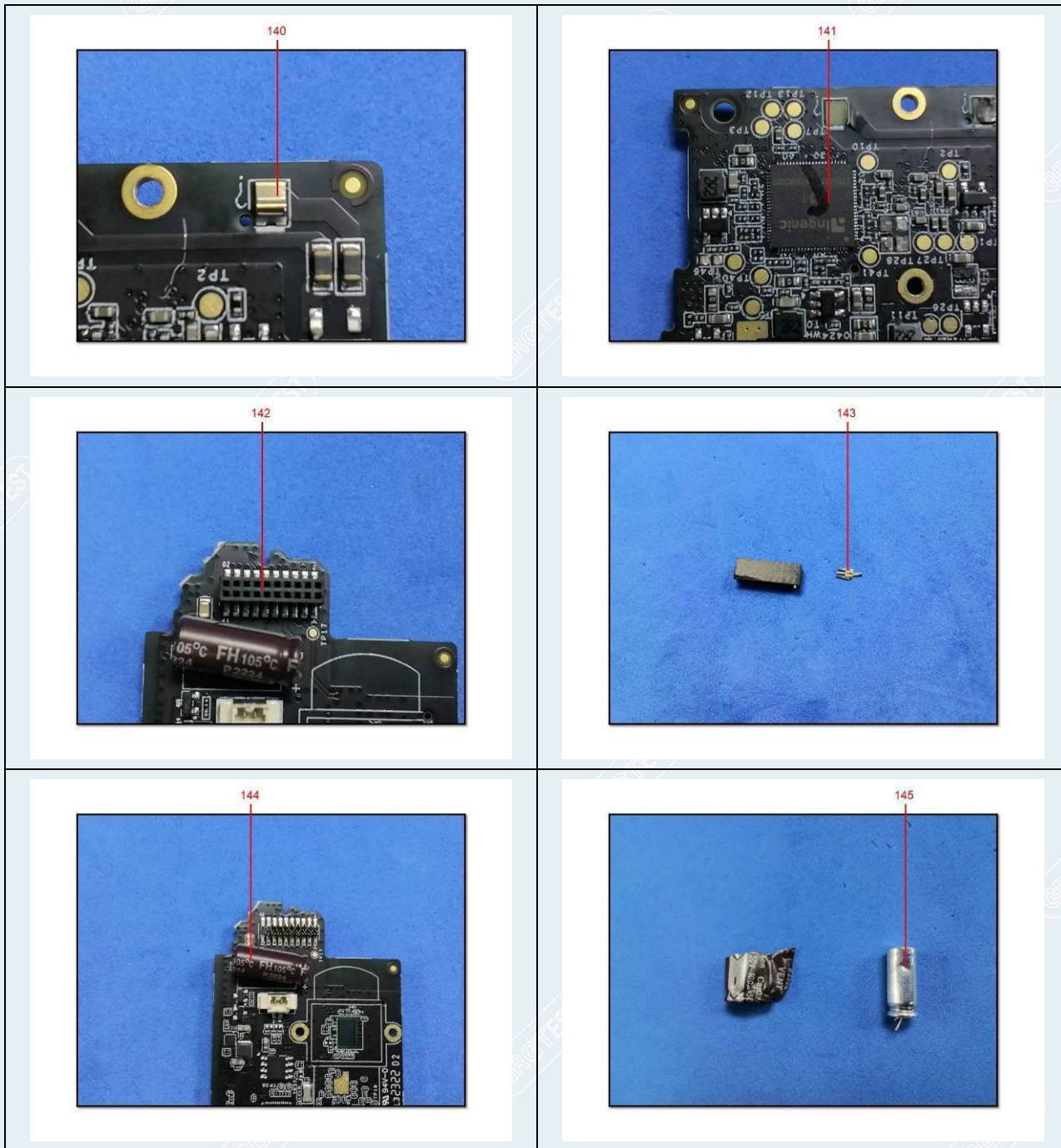
# TEST REPORT

CheckCode:469911  
Report No.:C202213022045E



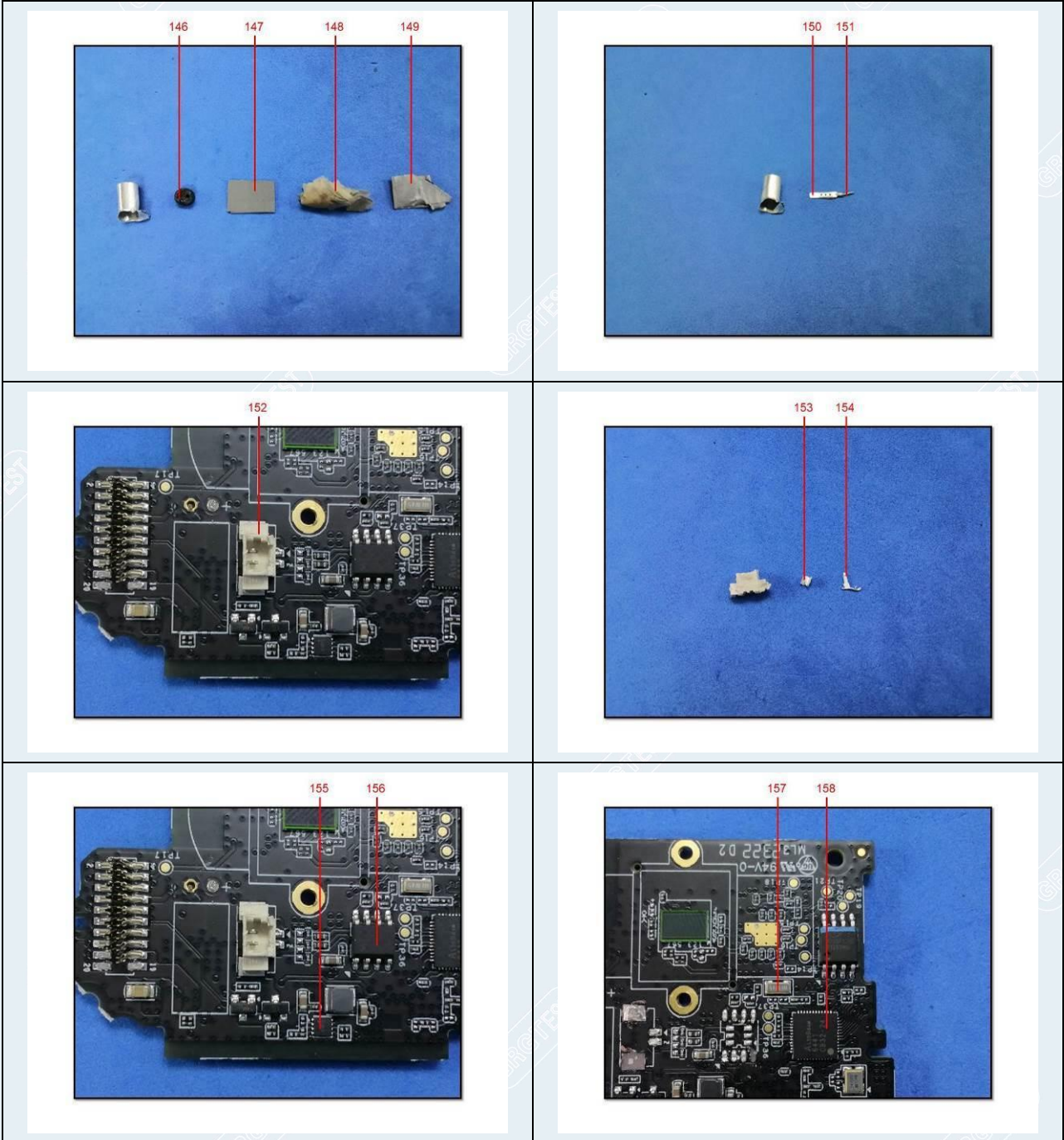
# TEST REPORT

CheckCode:469911  
Report No.:C202213022045E



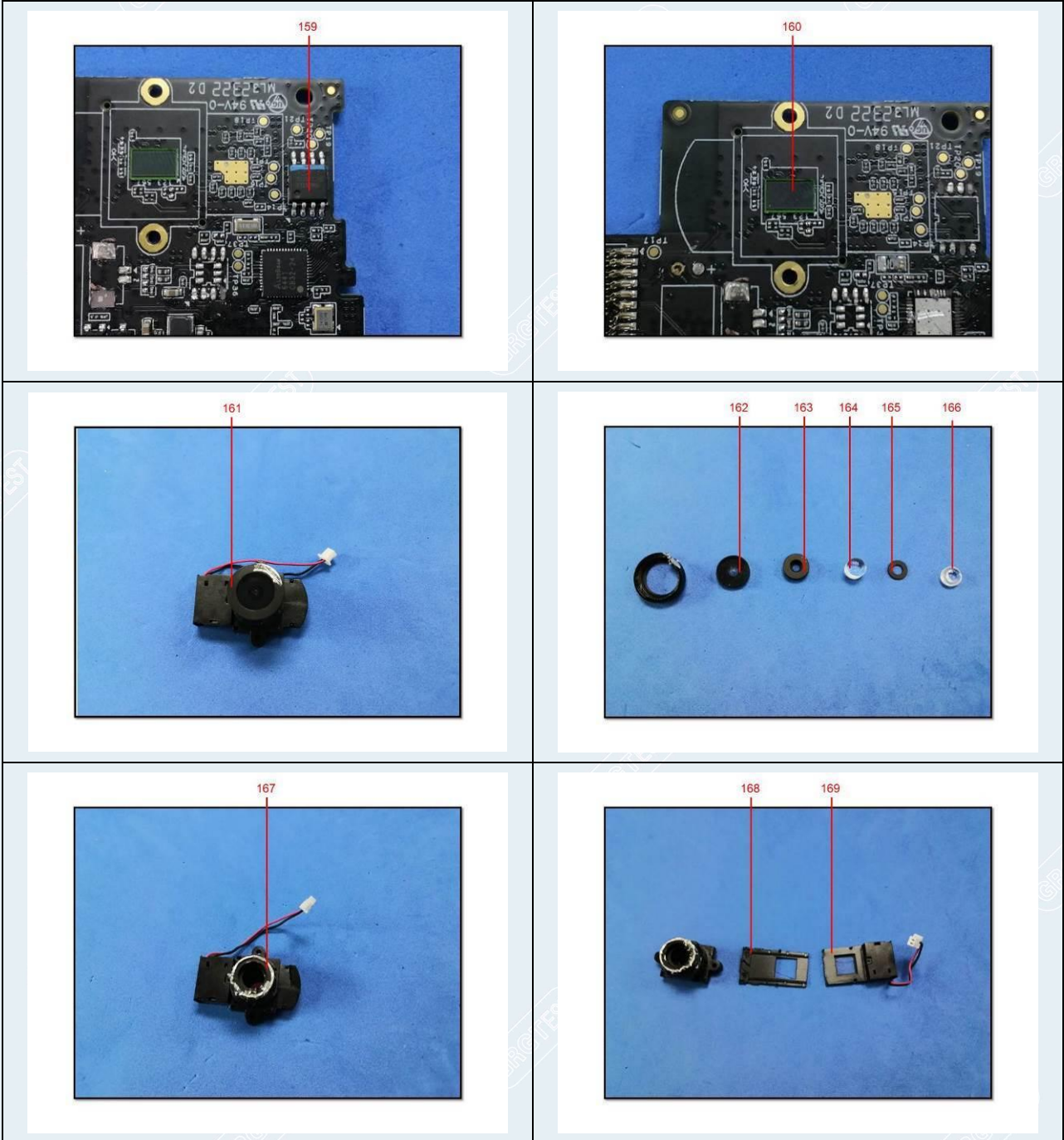
# TEST REPORT

CheckCode:469911  
Report No.:C202213022045E



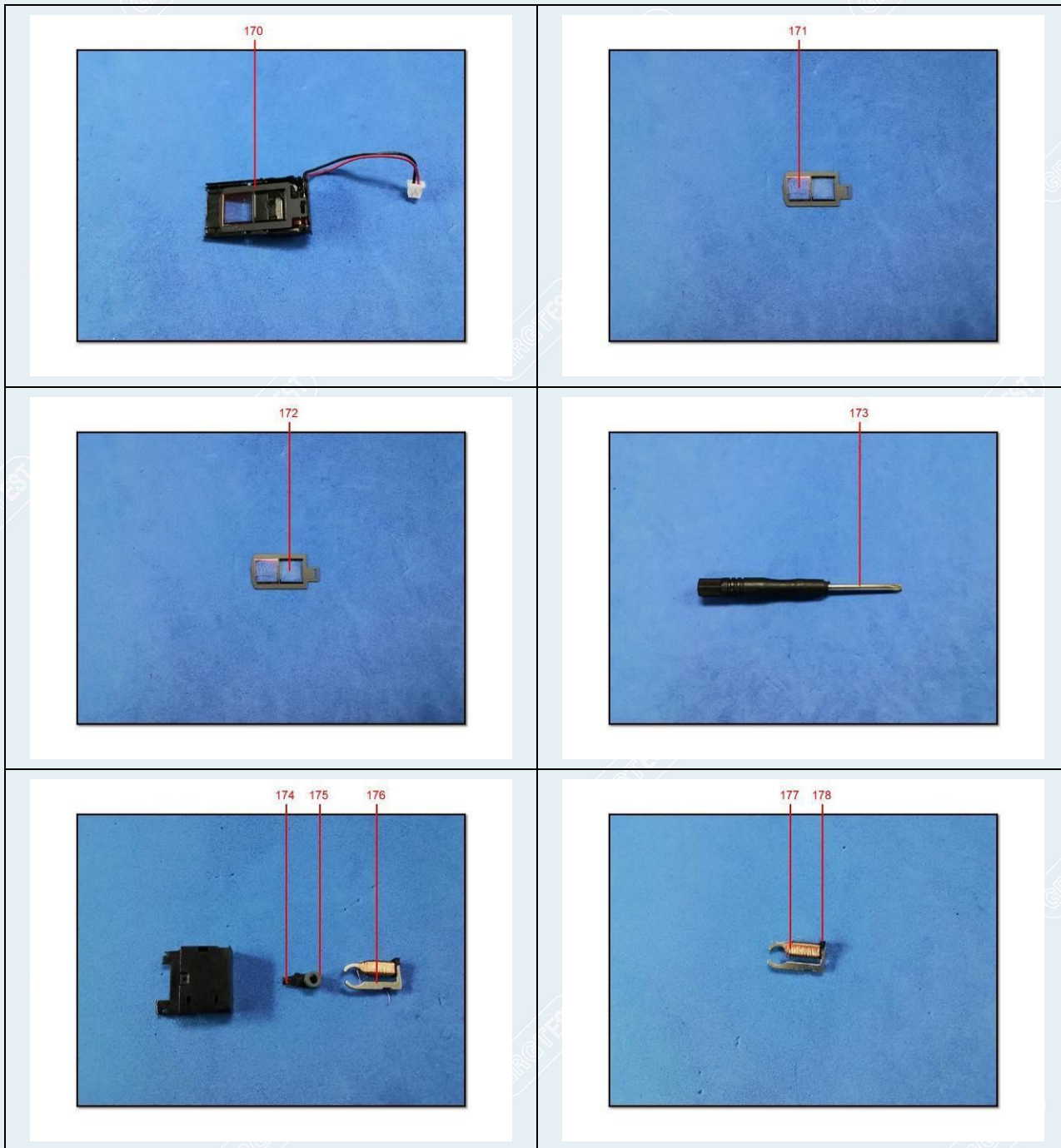
# TEST REPORT

CheckCode:469911  
Report No.:C202213022045E



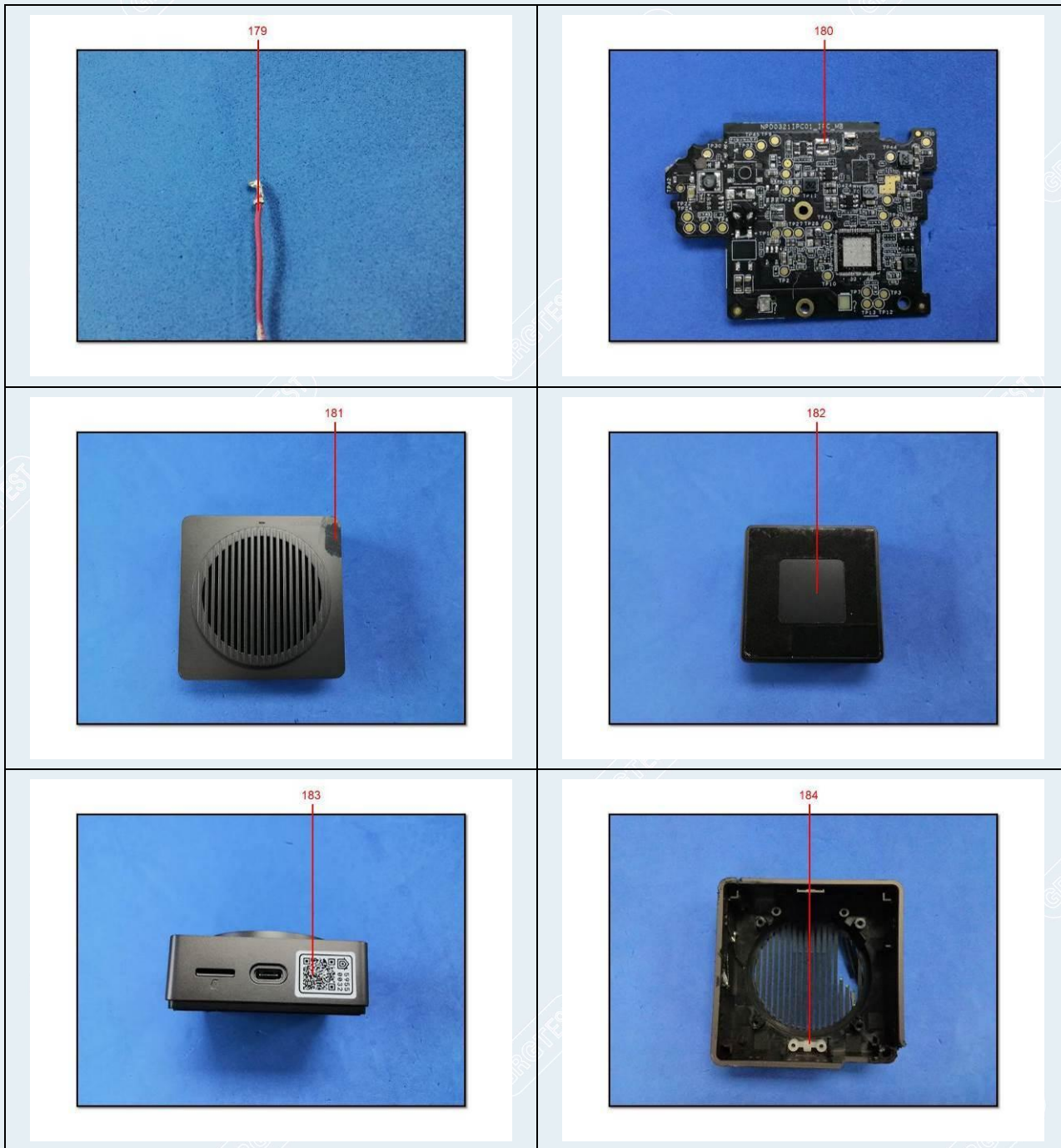
# TEST REPORT

CheckCode:469911  
Report No.:C202213022045E



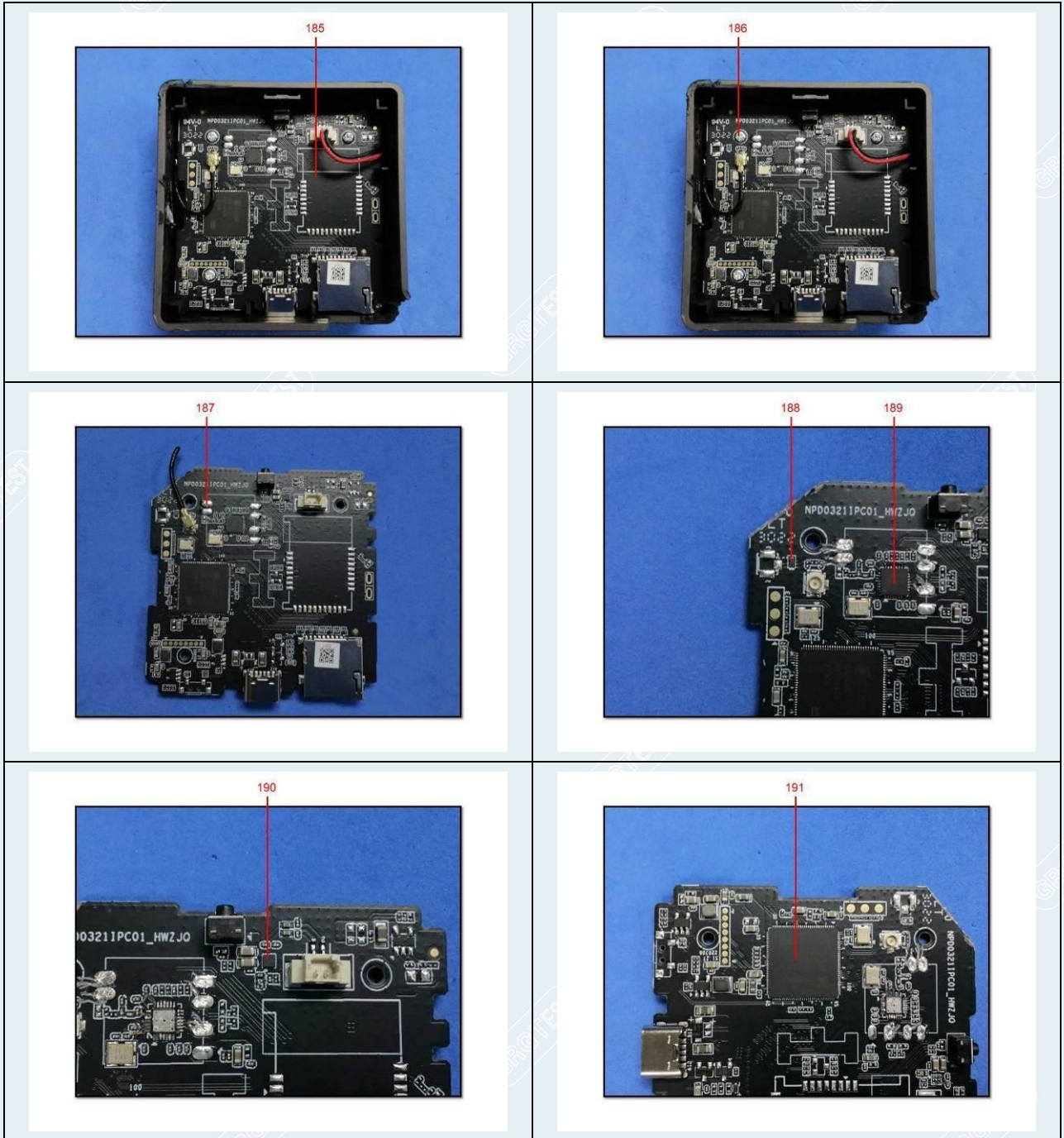
# TEST REPORT

CheckCode:469911  
Report No.:C202213022045E



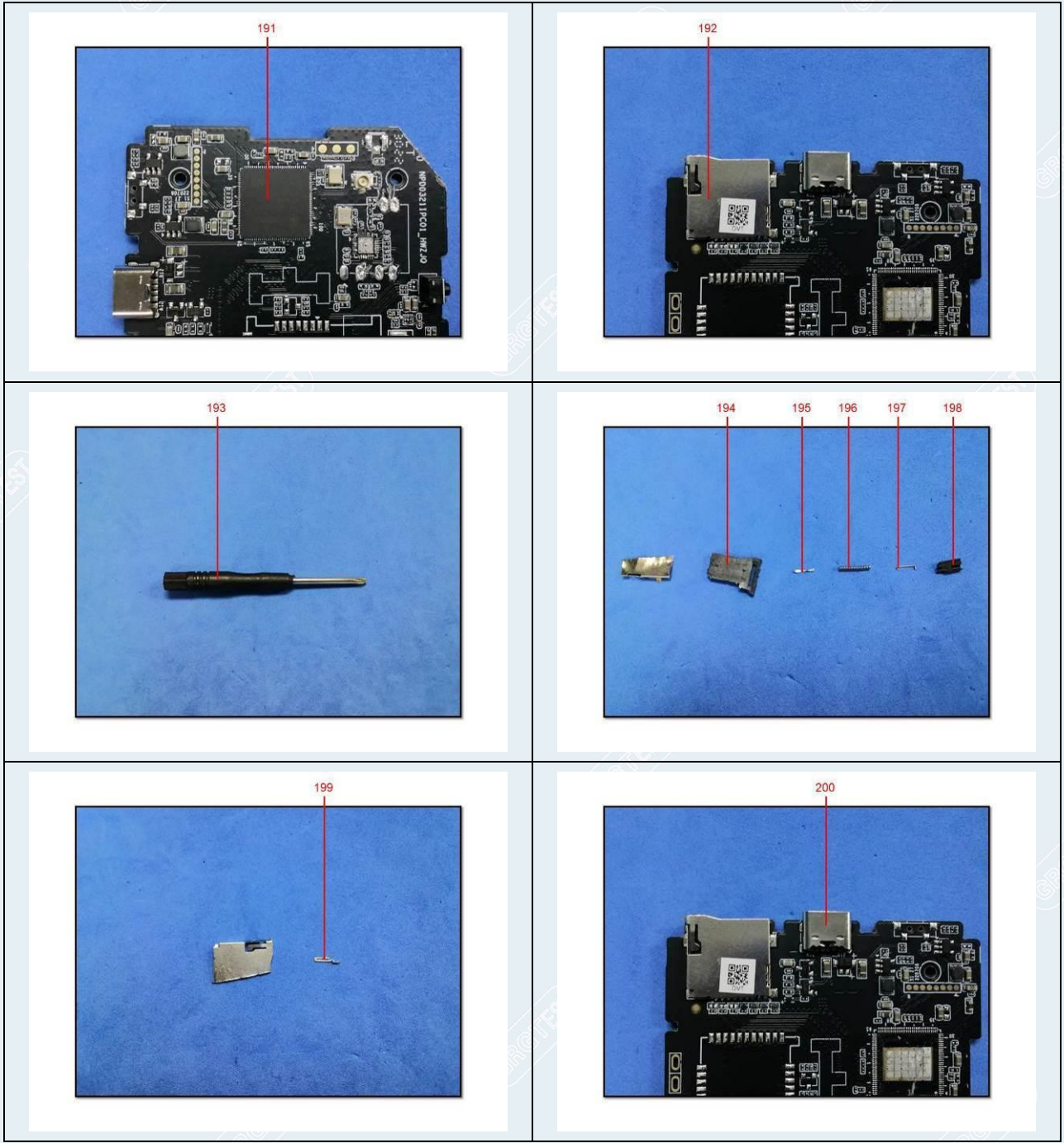
# TEST REPORT

CheckCode:469911  
Report No.:C202213022045E



# TEST REPORT

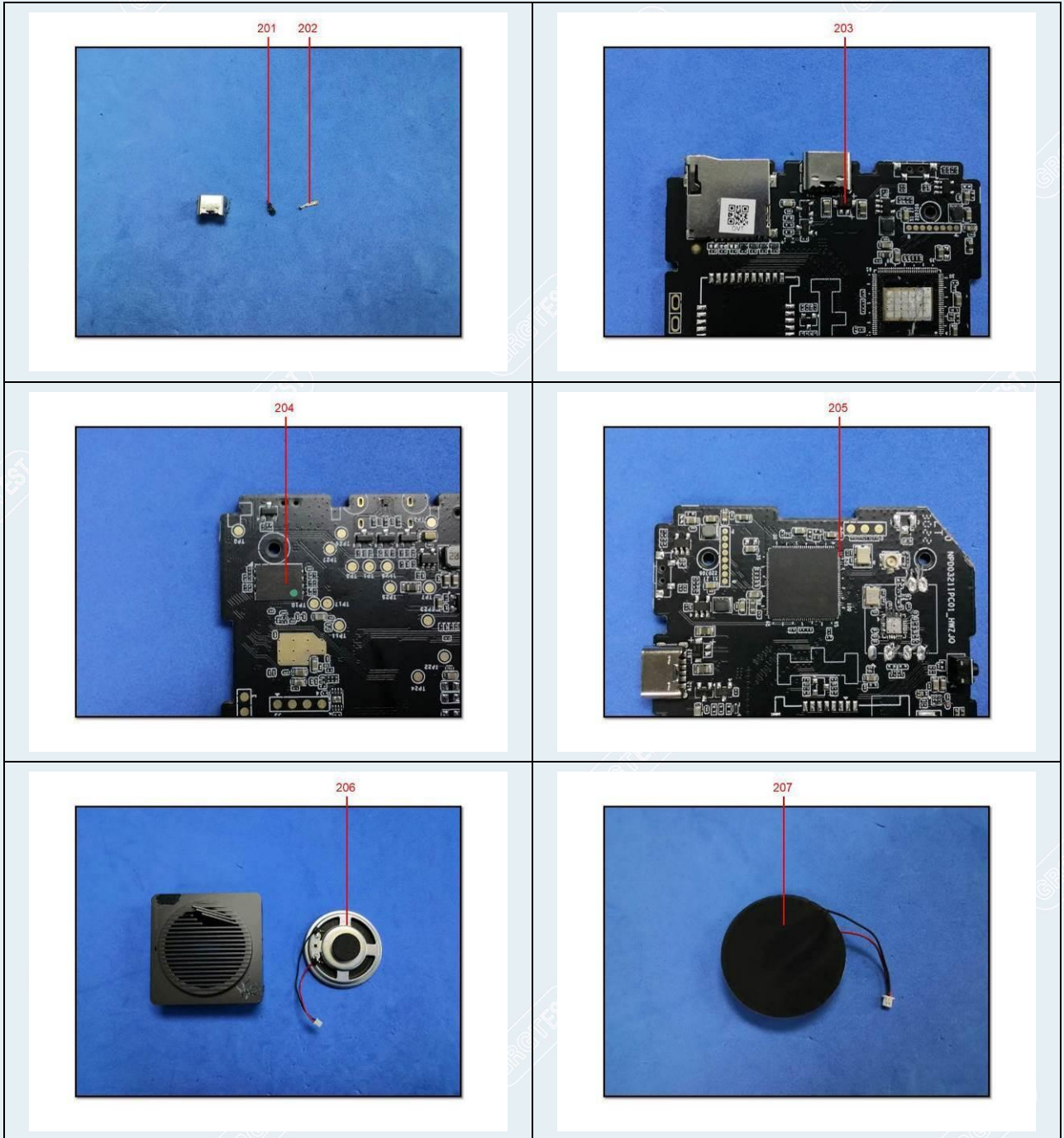
CheckCode:469911  
Report No.:C202213022045E





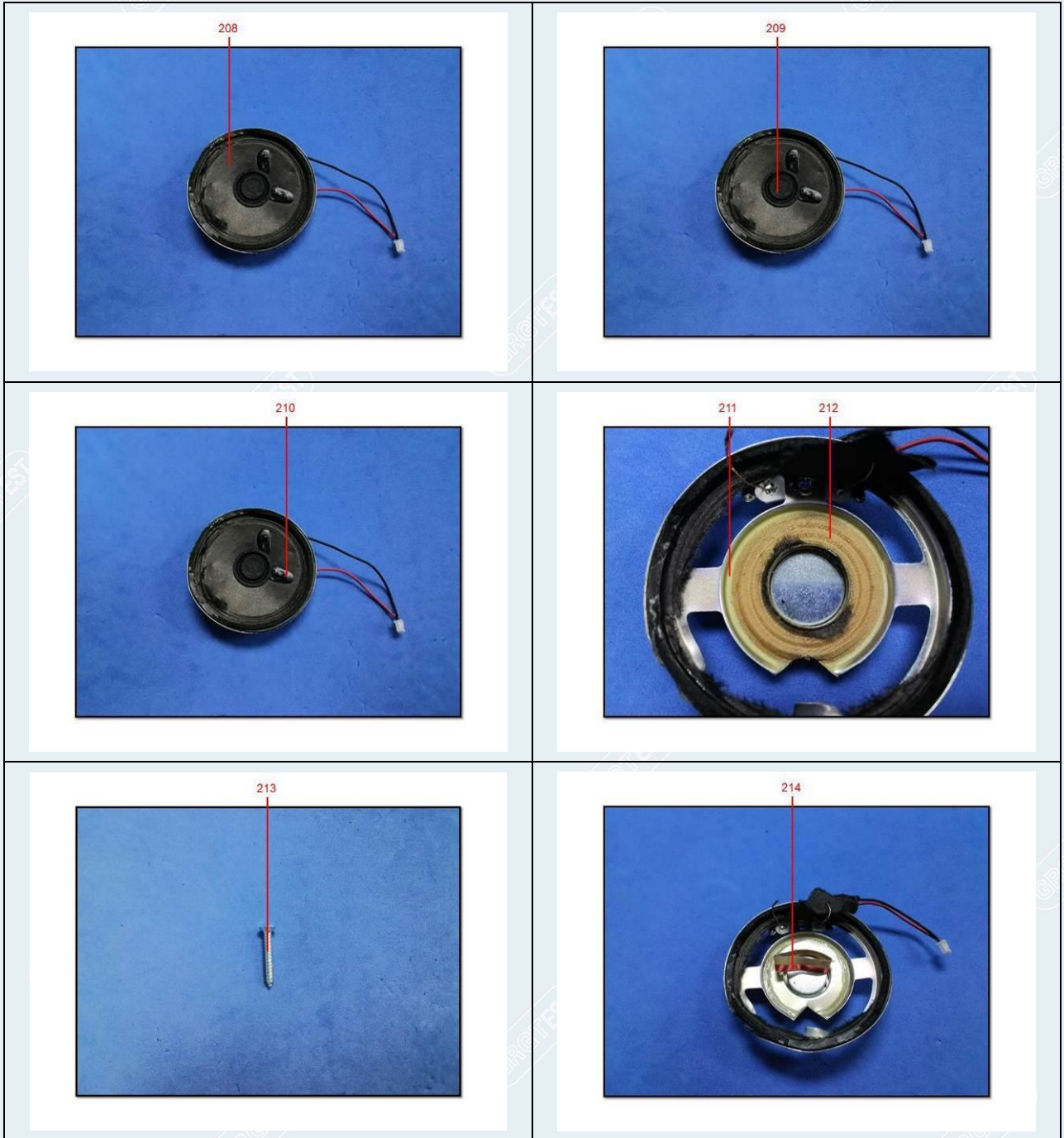
# TEST REPORT

CheckCode:469911  
Report No.:C202213022045E



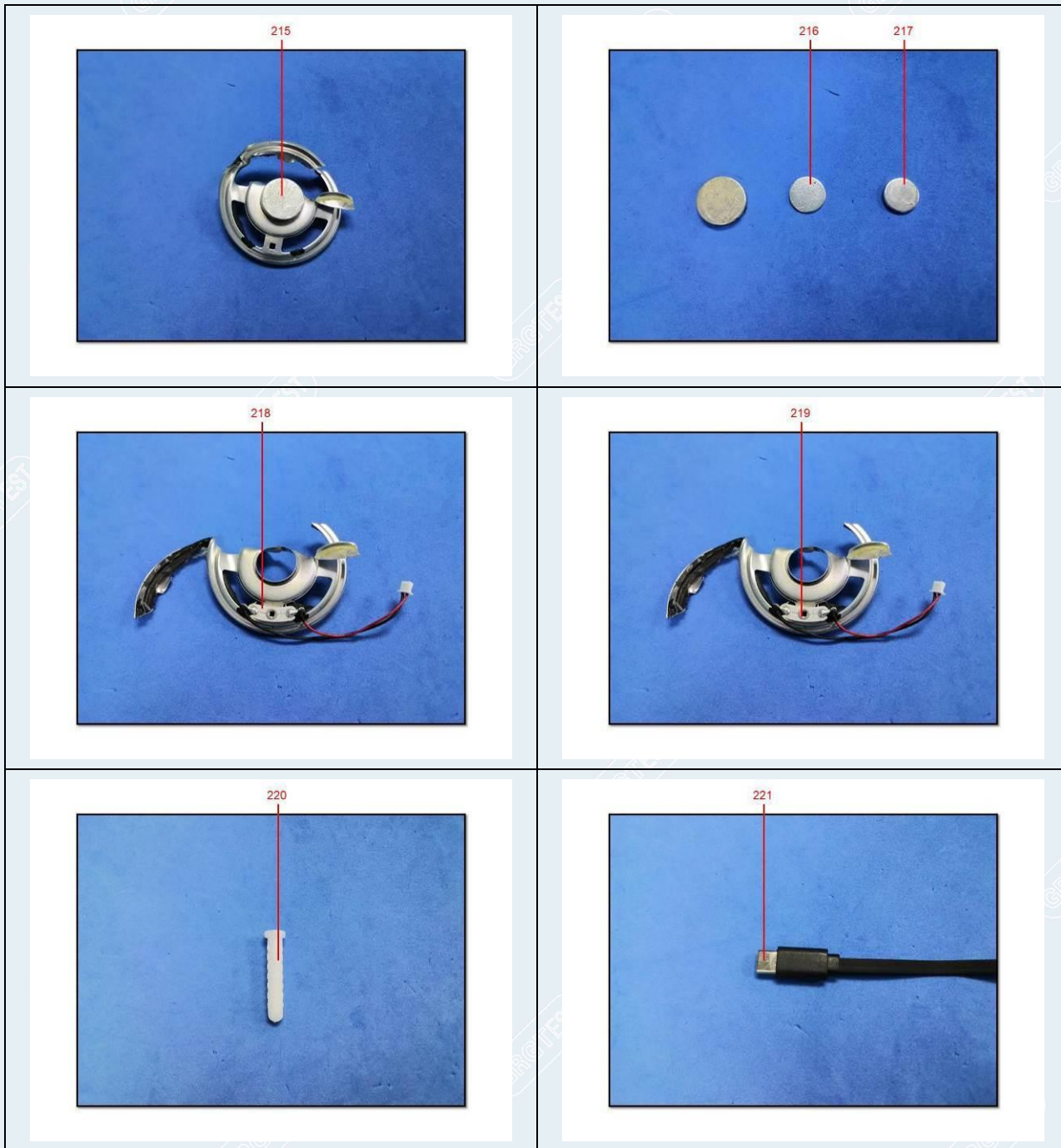
# TEST REPORT

CheckCode:469911  
Report No.:C202213022045E



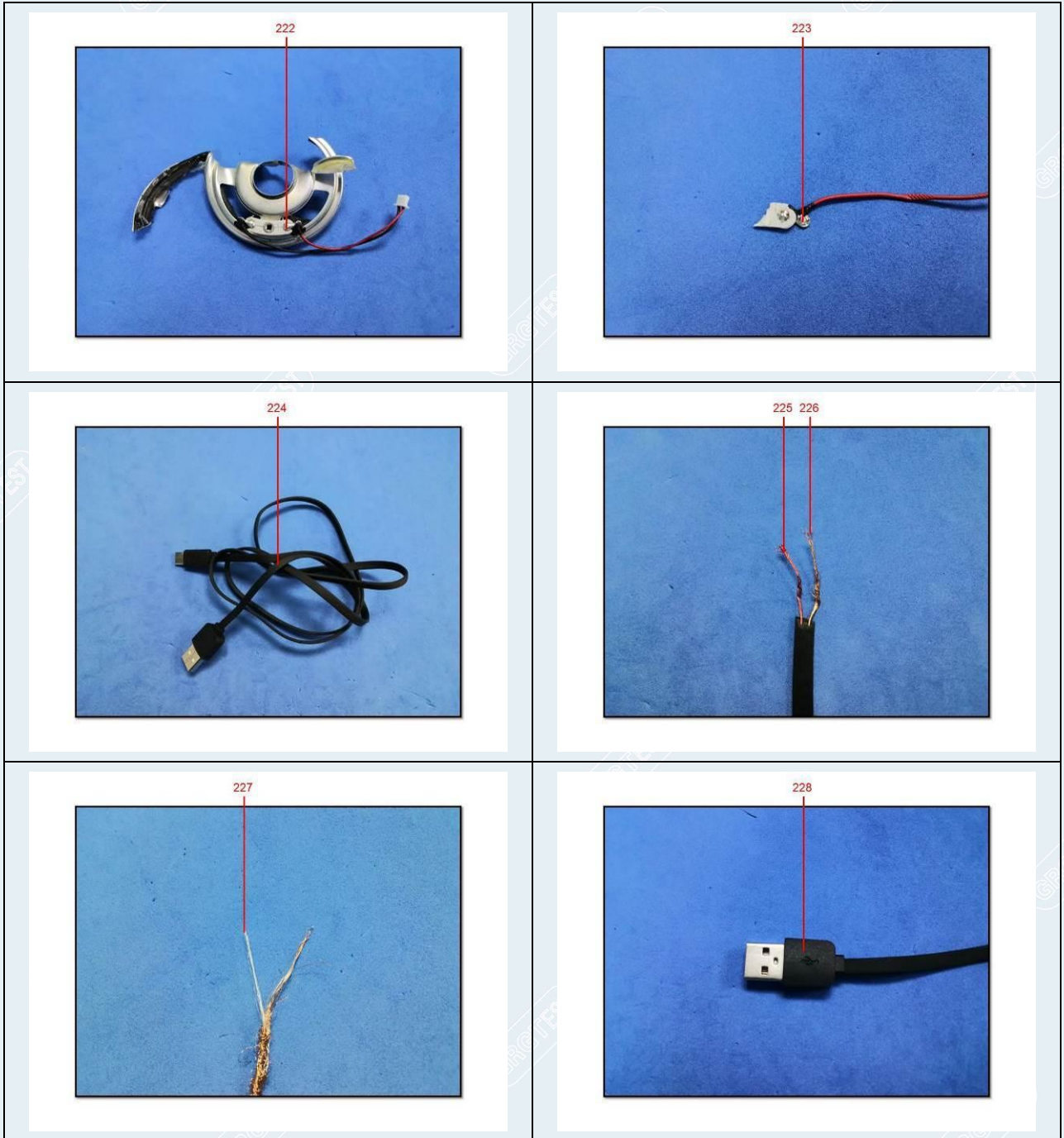
# TEST REPORT

CheckCode:469911  
Report No.:C202213022045E



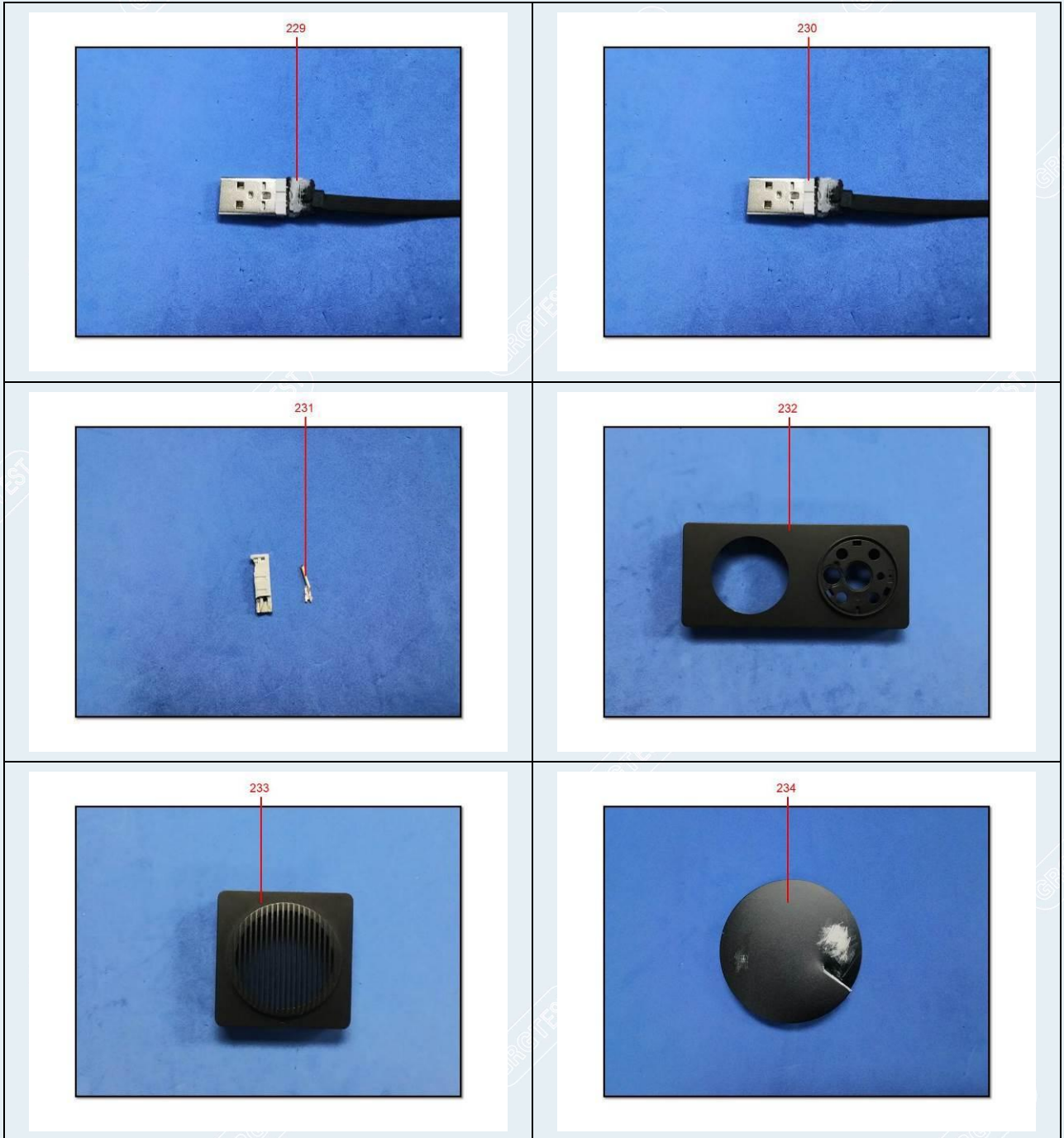
# TEST REPORT

CheckCode:469911  
Report No.:C202213022045E



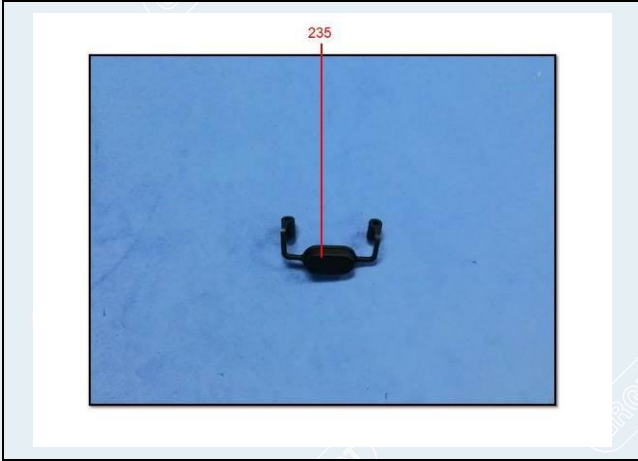
# TEST REPORT

CheckCode:469911  
Report No.:C202213022045E



# TEST REPORT

CheckCode:469911  
Report No.:C202213022045E



-----End of Report-----