



HP-LAB

TEST REPORT

No. C230511045002-1

Date: May 25, 2023

Page 1 of 7

Applicant: DOKE COMMUNICATION (HK) LIMITED

Applicant address: RM 1902 EASEY COMM BLDG 253-261 HENNESSY ROAD WANCHAI HK CHINA

The following samples were submitted and identified on behalf of the clients as

Sample Name: smartphone

Model: N6000

Category under the WEEE Directive: VI (Small IT and telecommunication equipment)

Trademark: Blackview

Manufacturer: Shenzhen DOKE Electronic Co., Ltd.

Manufacturer Address: 801, Building3, 7th Industrial Zone, Yulv Community, Yutang Road, Guangming District, Shenzhen, China.

Sample Received Date: May 11, 2023

Test Period: May 11, 2023 to May 25, 2023

Test Method: Please refer to next page(s).

Test Result: Please refer to next page(s).

CONCLUSION :

TESTED SAMPLES	TEST ITEM	RESULT
smartphone	1.Reuse /Recycling /Recovery - 2012/19/EU WEEE Directive	PASS

Signed for and on behalf of
HP-LAB

Tony Tang Manager



Photo of the Submitted Sample





Result of Reuse /Recycling /Recovery Assessment

Reuse /Recycling /Recovery	Reuse /Recycling (%)	Recovery (%)
Reuse /Recycling /Recovery Targets under the 2012/19/EU WEEE Directive	55	75
Result of Assessment	86.13	86.13
WEEE requirement compliance	OK	OK

Appearance of the Product





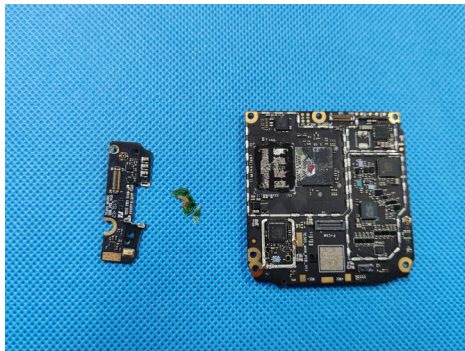
Disassembly Tree



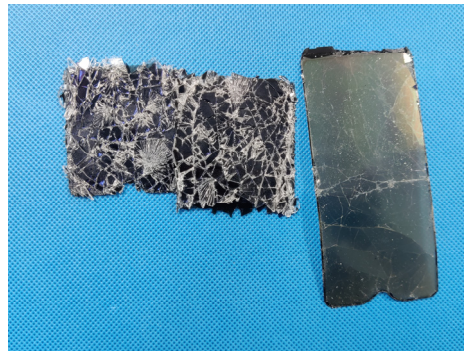
A



B



C



D



Photo No.	Component/Material	Weight(g)	Reuse/Recycling(%)	Energy Recovery (%)	Recovery(%)
A	Plastic	287.60	90	---	90
B	Metal	49.00	80	---	80
C	PCB	10.00	70	---	70
D	Glasses	18.00	50	---	50
Total		364.60	86.13	---	86.13

Disassembly Procedure



The disassembly procedure taken here is in accordance with the treatment requirements under the Annex II of the WEEE Directive. In addition, to consider economic and efficiency factors, manual operation and disassembly tools have been applied to separate the components and materials from this product in order to simulate the scenario at the treatment facility, and to achieve the objective that the separated components and materials can be reused, recycled and recovered.

Connection technique

For this product, the connection technology including as following: Glue and Screwed

Disassembly tool:

The disassembly tools used for this product show as following:

Disassembly Tool	Pictures	Disassembly Tool	Pictures
Diagonal Pliers		Cross Screwdriver	

Disassembly time: 60 minutes

Selective Treatment for Materials and Components

According to Articles 6(1) and the Annex VII of the WEEE Directive, this product contains components and material items are described in the following table.

Component/Material	Photo No.	Size & Quantity	Weight (g)
Printed circuit boards of mobile phones generally, and of other devices if the surface of the printed circuit board is greater than 10 square centimeters	C	8.40 cm ² *1 0.56 cm ² *1 50.00 cm ² *1	10.00

Material and Recycling Information

According to the information declared by the applicant company, the material and recycling information for this product is described in the following table.

The reuse, recycling and recovery assessment for this product is based upon economic and efficiency considerations, and the waste treatment technologies and equipment that are most frequently available to the market.

Photo No.	Component/Material	Weight (g)	Percent Weight (%)	Reuse/Recycling (%)	Energy Recovery (%)	Recovery (%)
A	Plastic	287.60	78.88	90	---	90
B	Metal	49.00	13.44	80	---	80
C	PCB	10.00	2.74	70	---	70
D	Glasses	18.00	4.94	50	---	50
Total		364.60	---	86.13	---	86.13

Note:

Calculation of the recovery rate about this product is not including the battery. Battery should execute the Directive 2006/66/EC.

Due to their insignificant weight and the difficulty of their separation in a manual operation, sticker, solder, paint and printing materials are not included in this assessment.

Plastic containing brominated flame retardants is not assessed in the list

Recycling and Recovery Rate Calculation

Reuse Recycling & Recovery Rate using in the report are calculated as following formulas:

Reuse & Recycling Rate = (Reuse & Recycling Weight) / (Product Total Weight) (%)

Recovery Rate = (Reuse & Recycling Weight + Energy Recovery Weight) / (Product Total Weight) (%)

Total weight of the product is including the main product and accessories

ANNEX VII of WEEE Directive

Selective treatment for materials and components of waste electrical and electronic equipment:

- polychlorinated biphenyls (PCB) containing capacitors in accordance with Council Directive 96/59/EC of 16 September 1996 on the disposal of polychlorinated biphenyls and polychlorinated terphenyls (PCB/PCT) (1),
- mercury containing components, such as switches or backlighting lamps,
- batteries,
- printed circuit boards of mobile phones generally, and of other devices if the surface of the printed circuit board is greater than 10 square centimeters,
- toner cartridges, liquid and paste, as well as colour toner,
- plastic containing brominated flame retardants,
- asbestos waste and components which contain asbestos,



- cathode ray tubes,
- chlorofluorocarbons (CFC), hydrochlorofluorocarbons (HCFC) or hydrofluorocarbons (HFC), hydrocarbons (HC),
- gas discharge lamps,
- liquid crystal displays (together with their casing where appropriate) of a surface greater than 80 square centimetres and all those back-lighted with gas discharge lamps,
- external electric cables,
- components containing refractory ceramic fibres as described in Commission Directive 97/69/EC of 5 December 1997 adapting to technical progress for the 23rd time Council Directive 67/548/EEC on the approximation of the laws, regulations and administrative provisions relating to the classification, packaging and labelling of dangerous substances,
- components containing radioactive substances with the exception of components that are below the exemption thresholds set in Article 3 of and Annex I to Council Directive 96/29/Euratom of 13 May 1996 laying down basic safety standards for the protection of the health of workers and the general public against the dangers arising from ionizing radiation,
- electrolyte capacitors containing substances of concern (height > 25 mm, diameter > 25 mm or proportionately similar volume).

Recommendations for WEEE Directive Compliance

- In order to avoid the product not meeting the reuse/recycling /recovery targets regulated under the WEEE Directive and the regulations of EU countries, the applicant company should, when selecting material and components design, consider they can be easy to reuse and recycle, This consideration will lessen the impact of the required international environmental directives and also improve the product's competitiveness
- It is recommended that the applicant company, when designing new product, especially where components and material have a large weight ratio, should consider using recyclable materials in order to increase the product's reuse/recycling /recover ration
- The product should comply with the RoHS Directive (Directive 2011/65/EU on the restriction of the use of certain hazardous substance in electrical and electronics equipment), the hazardous substance specification in the Directive should be controlled in the homogenous material of this product
- If a product has changed its product design, or materials or components employed, then the product should be reassessed and retested in accordance with the WEEE Directive for reuse/recycling /recovery assessment and RoHS for restricted /banned substances requirements.
- Remark: As specified by applicant, to test content in the selected materials of the submitted samples. The test results are only responsible for the submitted sample. The test report is only for customer research, teaching, internal quality control, product development and other purposes, for reference only.

*** End of Report ***