



# Test Report

**Report No.:** PTC25070304201C-EN01

**Issue Date:** Aug. 11, 2025

Page1 of 10

**Applicant:** Hangzhou Huacheng Network Technology Co.,Ltd.

**Address:** 13th Floor, Building 3, No. 582, Liye Road, Changhe Street, Binjiang District, Hangzhou, China (Zhejiang) Pilot Free Trade Zone

The following merchandise was (were) submitted and identified by client as:

**Sample Name:** Dash Camera

**Model:** S800PRO

**Manufacturer:** Hangzhou Huacheng Network Technology Co.,Ltd.

**Address:** 13th Floor, Building 3, No. 582, Liye Road, Changhe Street, Binjiang District, Hangzhou, China (Zhejiang) Pilot Free Trade Zone

**Sample Received Date:** Aug. 06, 2025

**Completed Date:** Aug. 11, 2025

**Test Requested:** As specified by client, with reference to RoHS Directive 2011/65/EU and its subsequent amendments regulation EU No.2015/863, to determine the Lead (Pb), Cadmium(Cd), Mercury(Hg), Hexavalent Chromium( $\text{Cr}^{6+}$ ), PBBs, PBDEs, Phthalates (DBP, BBP,DEHP,DIBP) content in the submitted sample.

**Conclusion(s):** According to the test results of below test parameters, Tested materials of submitted samples complied with the requirements for RoHS Directive 2011/65/EU and its subsequent amendments regulation EU No.2015/863.

**Test Result(s) and Test Method(s):**Please refer to next page(s).



Prepared by: Anne

Checked by:Crystal

Approved by: Miya

Anne

Crystal

Miya

This report is issued according to the general clauses in [www.ptc-testing.com](http://www.ptc-testing.com) by PTC. Responsibility, guarantee and law restriction are defined in the general service clauses. The report is only responsible for the submitted sample(s) except as otherwise noted. The report could not be copied without permission of the company.

**Precise Testing & Certification (Guangdong) Co., Ltd. (PTC)**

Building 1, No. 6, Tongxin Road, Dongcheng Street, Dongguan, Guangdong, China

Tel: 86-769-38808222

Fax: 86-769-38826111

[http:// www.ptc-testing.com](http://www.ptc-testing.com)



# Test Report

Report No.: PTC25070304201C-EN01

Issue Date: Aug. 11, 2025

Page2 of 10

## Test Result(s):

### 1.1) RoHS Directive 2011/65/EU -(Lead (Pb)/Cadmium(Cd)/Mercury(Hg)/Hexavalent Chromium(Cr<sup>6+</sup>)/PBBs/PBDEs)

Test Method: IEC 62321-3-1: 2013, IEC 62321-6:2015, IEC 62321-7-1:2015, analyzed by EDXRF & GC-MS & UV-Vis.

No.	Materials Description	EDXRF Result(s) (mg/kg)					Chemical Result (mg/kg)	Conclusion
		Pb	Cd	Hg	Cr	Br		
1	Silver metal with black coating (screw)	BL	BL	BL	BL	--	--	PASS
2	Black plastic (body shell)	BL	BL	BL	BL	BL	--	PASS
3	Silver metal (lens gasket)	BL	BL	BL	IN	--	Cr <sup>6+</sup> :Negative	PASS
4	Black plastic (button)	BL	BL	BL	BL	BL	--	PASS
5	Black plastic (lens gasket)	BL	BL	BL	BL	BL	--	PASS
6	Black plastic with silver coating (body shell)	BL	BL	BL	BL	BL	--	PASS
7	Black soft plastic (gasket)	BL	BL	BL	BL	BL	--	PASS
8	Black fabric adhesive (adhesive tape)	BL	BL	BL	BL	BL	--	PASS
9	Transparent plastic with black coating (display screen panel)	BL	BL	BL	BL	BL	--	PASS
10	Transparent plastic (substrate, display screen)	BL	BL	BL	BL	BL	--	PASS
11	White plastic (inner frame, display screen)	BL	BL	BL	BL	BL	--	PASS
12	Black plastic (wire jacket, sensor)	BL	BL	BL	BL	BL	--	PASS
13	Silver metal (base, speaker)	BL	BL	BL	BL	--	--	PASS
14	Silver-colored metal (power socket)	BL	BL	BL	IN	--	Cr <sup>6+</sup> :Negative	PASS
15	Silver metal (memory card slot)	BL	BL	BL	BL	--	--	PASS
16	Green PCB (main PCB)	BL	BL	BL	BL	BL	--	PASS
17	Black PCB (camera PCB)	BL	BL	BL	BL	IN	PBBs:N.D. PBDEs:N.D.	PASS

This report is issued according to the general clauses in [www.ptc-testing.com](http://www.ptc-testing.com) by PTC. Responsibility, guarantee and law restriction are defined in the general service clauses. The report is only responsible for the submitted sample(s) except as otherwise noted.  
The report could not be copied without permission of the company.

**Precise Testing & Certification (Guangdong) Co., Ltd. (PTC)**

Building 1, No. 6, Tongxin Road, Dongcheng Street, Dongguan, Guangdong, China

Tel: 86-769-38808222

Fax: 86-769-38826111

[http:// www.ptc-testing.com](http://www.ptc-testing.com)



# Test Report

Report No.: PTC25070304201C-EN01

Issue Date: Aug. 11, 2025

Page3 of 10

No.	Materials Description	EDXRF Result(s) (mg/kg)					Chemical Result (mg/kg)	Conclusion
		Pb	Cd	Hg	Cr	Br		
18	Black plastic (camera lens cover)	BL	BL	BL	BL	BL	--	PASS

- Note:**
1. mg/kg = milligram per kilogram (ppm).
  2. N.D. = Not Detected
  3. The sample is positive for  $\text{Cr}^{6+}$  if the  $\text{Cr}^{6+}$  concentration is greater than  $0.13\mu\text{g}/\text{cm}^2$ . The sample coating is considered to contain  $\text{Cr}^{6+}$ .
  4. The sample is negative for  $\text{Cr}^{6+}$  if the  $\text{Cr}^{6+}$  concentration is less than  $0.10\mu\text{g}/\text{cm}^2$ . The sample is considered a non-Cr(VI) based coating.
  5. The result of  $\text{Cr}^{6+}$  between  $0.10\mu\text{g}/\text{cm}^2$  and  $0.13\mu\text{g}/\text{cm}^2$  is considered to be inconclusive - unavoidable coating variations may influence the determination.
  6. The result are obtained by EDXRF for primary screening, if the result exceeds the below limit (BL), and further chemical testing.
  7. For EDXRF screening, the result(s) of Cr VI was (were) reported as total chromium and the result(s) of PBBs and PBDEs was (were) reported as total bromine.

## Screening limits in mg/kg for regulated elements in various matrices

Elements	Polymer	Metal	Composite Materials
Pb	$\text{BL} \leq (700-3\sigma) < X < (1300+3\sigma) \leq \text{OL}$	$\text{BL} \leq (700-3\sigma) < X < (1300+3\sigma) \leq \text{OL}$	$\text{BL} \leq (500-3\sigma) < X < (1500+3\sigma) \leq \text{OL}$
Cd	$\text{BL} \leq (70-3\sigma) < X < (130+3\sigma) \leq \text{OL}$	$\text{BL} \leq (70-3\sigma) < X < (130+3\sigma) \leq \text{OL}$	$\text{LOD} < X < (150+3\sigma) \leq \text{OL}$
Hg	$\text{BL} \leq (700-3\sigma) < X < (1300+3\sigma) \leq \text{OL}$	$\text{BL} \leq (700-3\sigma) < X < (1300+3\sigma) \leq \text{OL}$	$\text{BL} \leq (500-3\sigma) < X < (1500+3\sigma) \leq \text{OL}$
Cr	$\text{BL} \leq (700-3\sigma) < X$	$\text{BL} \leq (700-3\sigma) < X$	$\text{BL} \leq (500-3\sigma) < X$
Br	$\text{BL} \leq (300-3\sigma) < X$	--	$\text{BL} \leq (250-3\sigma) < X$

BL = Below Limit, OL = Over Limit, IN = Inconclusive, LOD = Limit of Detection

This report is issued according to the general clauses in [www.ptc-testing.com](http://www.ptc-testing.com) by PTC. Responsibility, guarantee and law restriction are defined in the general service clauses. The report is only responsible for the submitted sample(s) except as otherwise noted.  
The report could not be copied without permission of the company.

**Precise Testing & Certification (Guangdong) Co., Ltd. (PTC)**

Building 1, No. 6, Tongxin Road, Dongcheng Street, Dongguan, Guangdong, China

Tel: 86-769-38808222

Fax: 86-769-38826111

[http:// www.ptc-testing.com](http://www.ptc-testing.com)



# Test Report

Report No.: PTC25070304201C-EN01

Issue Date: Aug. 11, 2025

Page4 of 10

## Chemical Testing - Detection Limit & 2011/65/EU Limit:

Name of Chemicals	Method Detection Limit (mg/kg)	2011/65/EU Limit (mg/kg)
Lead (Pb)	5	1000
Cadmium (Cd)	5	100
Mercury (Hg)	5	1000
Chromium VI (Cr VI)	Non-metal: 5 Metal: Negative	Non-metal: 1000 Metal: Negative
Polybromobiphenyls (PBBs) -Bromobiphenyl (MonoBB) -Dibromobiphenyl (DiBB) -Tribromobiphenyl (TriBB) -Tetrabromobiphenyl (TetraBB) -Pentabromobiphenyl (PentaBB) -Hexabromobiphenyl (HexaBB) -Heptabromobiphenyl (HeptaBB) -Octabromobiphenyl (OctaBB) -Nonabromobiphenyl (NonaBB) -Decabromobiphenyl (DecaBB)	Each 5	Sum: 1 000
Polybromodiphenyl ethers (PBDEs) -Bromodiphenyl ether (MonoBDE) -Dibromodiphenyl ether (DiBDE) -Tribromodiphenyl ether (TriBDE) -Tetrabromodiphenyl ether (TetraBDE) -Pentabromodiphenyl ether (PentaBDE) -Hexabromodiphenyl ether (HexaBDE) -Heptabromodiphenyl ether (HeptaBDE) -Octabromodiphenyl ether (OctaBDE) -Nonabromodiphenyl ether (NonaBDE) -Decabromodiphenyl ether (DecaBDE)	Each 5	Sum: 1 000

This report is issued according to the general clauses in [www.ptc-testing.com](http://www.ptc-testing.com) by PTC. Responsibility, guarantee and law restriction are defined in the general service clauses. The report is only responsible for the submitted sample(s) except as otherwise noted.  
The report could not be copied without permission of the company.

**Precise Testing & Certification (Guangdong) Co., Ltd. (PTC)**

Building 1, No. 6, Tongxin Road, Dongcheng Street, Dongguan, Guangdong, China

Tel: 86-769-38808222

Fax: 86-769-38826111

[http:// www.ptc-testing.com](http://www.ptc-testing.com)



# Test Report

Report No.: PTC25070304201C-EN01

Issue Date: Aug. 11, 2025

Page5 of 10

## Test Result(s):

### 1.2) RoHS Directive 2011/65/EU and its subsequent amendments regulation EU No.2015/863 - (Phthalates DIBP,DBP, BBP, DEHP)

Method: IEC 62321-8: 2017, analyzed by Gas Chromatograph-Mass Spectrometry (GC-MS).

Substances	DBP	BBP	DEHP	DIBP	Conclusion
CAS No.	84-74-2	85-68-7	117-81-7	84-69-5	
Limit(s) (mg/kg)	1000	1000	1000	1000	
MDL (mg/kg)	50	50	50	50	
Material No.	Result (mg/kg)				
2+4+5	N.D.	N.D.	N.D.	N.D.	PASS
6+7+8	N.D.	N.D.	N.D.	N.D.	PASS
9+10+11	N.D.	N.D.	N.D.	N.D.	PASS
12	N.D.	N.D.	246	N.D.	PASS
16+17+18	N.D.	N.D.	N.D.	N.D.	PASS

- Note:**
1. mg/kg = milligram per kilogram (ppm).
  2. N.D. = Not Detected (< MDL).
  3. MDL = Method Detection Limit.

This report is issued according to the general clauses in [www.ptc-testing.com](http://www.ptc-testing.com) by PTC. Responsibility, guarantee and law restriction are defined in the general service clauses. The report is only responsible for the submitted sample(s) except as otherwise noted.  
The report could not be copied without permission of the company.

**Precise Testing & Certification (Guangdong) Co., Ltd. (PTC)**

Building 1, No. 6, Tongxin Road, Dongcheng Street, Dongguan, Guangdong, China

Tel: 86-769-38808222

Fax: 86-769-38826111

[http:// www.ptc-testing.com](http://www.ptc-testing.com)



# Test Report

Report No.: PTC25070304201C-EN01

Issue Date: Aug. 11, 2025

Page6 of 10

## Test Material List

The following materials apply only to the samples submitted for phthalates testing.

Material No.	Description (Location)
2	Black plastic (body shell)
4	Black plastic (button)
5	Black plastic (lens gasket)
6	Black plastic with silver coating (body shell)
7	Black soft plastic (gasket)
8	Black fabric adhesive (adhesive tape)
9	Transparent plastic with black coating (display screen panel)
10	Transparent plastic (substrate, display screen)
11	White plastic (inner frame, display screen)
12	Black plastic (wire jacket, sensor)
16	Green PCB (main PCB)
17	Black PCB (camera PCB)
18	Black plastic (camera lens cover)

This report is issued according to the general clauses in [www.ptc-testing.com](http://www.ptc-testing.com) by PTC. Responsibility, guarantee and law restriction are defined in the general service clauses. The report is only responsible for the submitted sample(s) except as otherwise noted.  
The report could not be copied without permission of the company.

**Precise Testing & Certification (Guangdong) Co., Ltd. (PTC)**

Building 1, No. 6, Tongxin Road, Dongcheng Street, Dongguan, Guangdong, China

Tel: 86-769-38808222

Fax: 86-769-38826111

[http:// www.ptc-testing.com](http://www.ptc-testing.com)



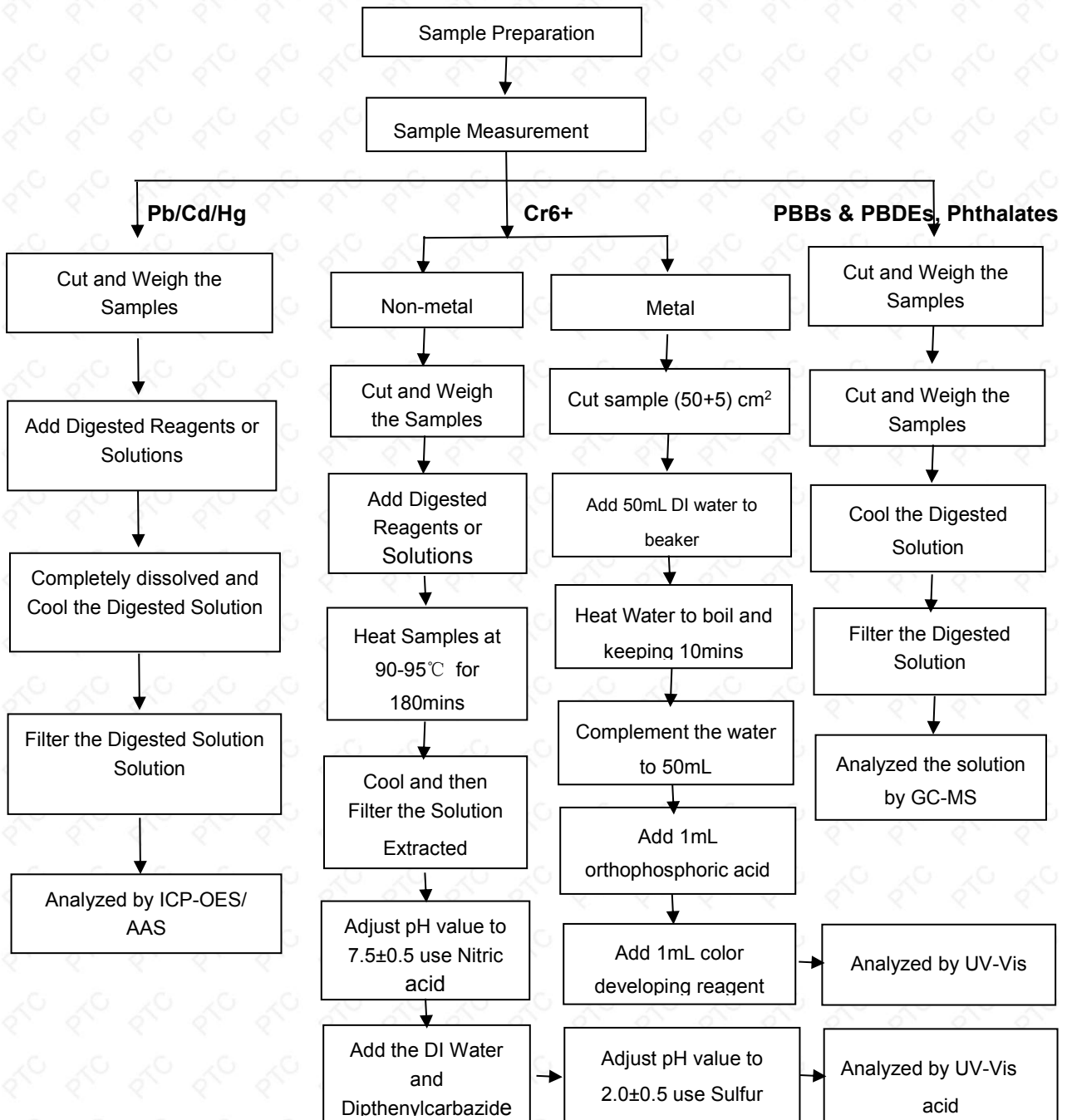
# Test Report

Report No.: PTC25070304201C-EN01

Issue Date: Aug. 11, 2025

Page7 of 10

## Pb/Cd/Hg/Cr6+/PBBs/PBDEs , Phthalates Testing Flow Chart



This report is issued according to the general clauses in [www.ptc-testing.com](http://www.ptc-testing.com) by PTC. Responsibility, guarantee and law restriction are defined in the general service clauses. The report is only responsible for the submitted sample(s) except as otherwise noted. The report could not be copied without permission of the company.

**Precise Testing & Certification (Guangdong) Co., Ltd. (PTC)**

Building 1, No. 6, Tongxin Road, Dongcheng Street, Dongguan, Guangdong, China

Tel: 86-769-38808222

Fax: 86-769-38826111

[http:// www.ptc-testing.com](http://www.ptc-testing.com)



# Test Report

Report No.: PTC25070304201C-EN01

Issue Date: Aug. 11, 2025

Page 8 of 10

Photo(s) of Sample:



This report is issued according to the general clauses in [www.ptc-testing.com](http://www.ptc-testing.com) by PTC. Responsibility, guarantee and law restriction are defined in the general service clauses. The report is only responsible for the submitted sample(s) except as otherwise noted. The report could not be copied without permission of the company.

**Precise Testing & Certification (Guangdong) Co., Ltd. (PTC)**

Building 1, No. 6, Tongxin Road, Dongcheng Street, Dongguan, Guangdong, China

Tel: 86-769-38808222

Fax: 86-769-38826111

[http:// www.ptc-testing.com](http://www.ptc-testing.com)



Page9 of 10



Building 1, No. 6, Tongxin Road, Dongcheng Street, Dongguan, Guangdong, China  
Tel: 86-769-38808222      Fax: 86-769-38826111      [http:// www.ptc-testing.com](http://www.ptc-testing.com)

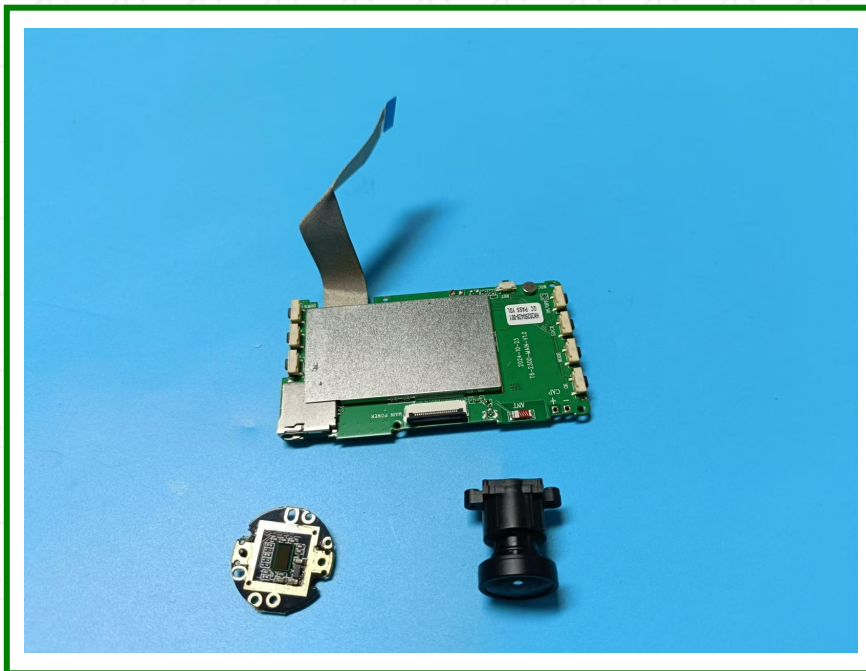


# Test Report

Report No.: PTC25070304201C-EN01

Issue Date: Aug. 11, 2025

Page10 of 10



\*\*\*End of Report\*\*\*

This report is issued according to the general clauses in [www.ptc-testing.com](http://www.ptc-testing.com) by PTC. Responsibility, guarantee and law restriction are defined in the general service clauses. The report is only responsible for the submitted sample(s) except as otherwise noted. The report could not be copied without permission of the company.

**Precise Testing & Certification (Guangdong) Co., Ltd. (PTC)**

Building 1, No. 6, Tongxin Road, Dongcheng Street, Dongguan, Guangdong, China

Tel: 86-769-38808222

Fax: 86-769-38826111

[http:// www.ptc-testing.com](http://www.ptc-testing.com)