



Test Report

Report No.: PTC25070304202C-EN01

Issue Date: Aug. 11, 2025

Page1 of 10

Applicant: Hangzhou Huacheng Network Technology Co.,Ltd.

Address: 13th Floor, Building 3, No. 582, Liye Road, Changhe Street, Binjiang District, Hangzhou, China (Zhejiang) Pilot Free Trade Zone

The following merchandise was (were) submitted and identified by client as:

Sample Name: Dash Camera

Model: T800

Manufacturer: Hangzhou Huacheng Network Technology Co.,Ltd.

Address: 13th Floor, Building 3, No. 582, Liye Road, Changhe Street, Binjiang District, Hangzhou, China (Zhejiang) Pilot Free Trade Zone

Sample Received Date: Aug. 06, 2025

Completed Date: Aug. 11, 2025

Test Requested: As specified by client, with reference to RoHS Directive 2011/65/EU and its subsequent amendments regulation EU No.2015/863, to determine the Lead (Pb), Cadmium(Cd), Mercury(Hg), Hexavalent Chromium(Cr⁶⁺), PBBs, PBDEs, Phthalates (DBP, BBP,DEHP,DIBP) content in the submitted sample.

Conclusion(s): According to the test results of below test parameters, Tested materials of submitted samples complied with the requirements for RoHS Directive 2011/65/EU and its subsequent amendments regulation EU No.2015/863.

Test Result(s) and Test Method(s):Please refer to next page(s).



Prepared by: Anne

Checked by:Crystal

Approved by: Miya

Anne

Crystal

Miya

This report is issued according to the general clauses in www.ptc-testing.com by PTC. Responsibility, guarantee and law restriction are defined in the general service clauses. The report is only responsible for the submitted sample(s) except as otherwise noted. The report could not be copied without permission of the company.

Precise Testing & Certification (Guangdong) Co., Ltd. (PTC)

Building 1, No. 6, Tongxin Road, Dongcheng Street, Dongguan, Guangdong, China

Tel: 86-769-38808222

Fax: 86-769-38826111

[http:// www.ptc-testing.com](http://www.ptc-testing.com)



Test Report

Report No.: PTC25070304202C-EN01

Issue Date: Aug. 11, 2025

Page2 of 10

Test Result(s):

1.1) RoHS Directive 2011/65/EU -(Lead (Pb)/Cadmium(Cd)/Mercury(Hg)/Hexavalent Chromium(Cr⁶⁺)/PBBs/PBDEs)

Test Method: IEC 62321-3-1: 2013, IEC 62321-6:2015, IEC 62321-7-1:2015, analyzed by EDXRF & GC-MS & UV-Vis.

No.	Materials Description	EDXRF Result(s) (mg/kg)					Chemical Result (mg/kg)	Conclusion
		Pb	Cd	Hg	Cr	Br		
1	Silver metal with black coating (screw)	BL	BL	BL	BL	--	--	PASS
2	Black plastic (body shell)	BL	BL	BL	BL	BL	--	PASS
3	Silver plastic with black printing / adhesive (label)	BL	BL	BL	BL	BL	--	PASS
4	Black plastic (button)	BL	BL	BL	BL	BL	--	PASS
5	Black plastic (keypad pad)	BL	BL	BL	BL	BL	--	PASS
6	Transparent plastic with black coating (label)	BL	BL	BL	BL	BL	--	PASS
7	Blue soft plastic (gasket)	BL	BL	BL	BL	BL	--	PASS
8	Black fabric adhesive (adhesive tape)	BL	BL	BL	BL	BL	--	PASS
9	Black fiber with adhesive (dust cover)	BL	BL	BL	BL	BL	--	PASS
10	White plastic (plug, audio cable)	BL	BL	BL	BL	BL	--	PASS
11	Black plastic (wire jacket, audio cable)	BL	BL	BL	BL	BL	--	PASS
12	Red plastic (wire jacket audio cable)	BL	BL	BL	BL	BL	--	PASS
13	Silver metal (base, speaker)	BL	BL	BL	IN	--	Cr ⁶⁺ :Negative	PASS
14	Silver-colored metal (power socket)	BL	BL	BL	IN	--	Cr ⁶⁺ :Negative	PASS
15	Silver metal (memory card slot)	BL	BL	BL	IN	--	Cr ⁶⁺ :Negative	PASS
16	Green PCB (main PCB)	BL	BL	BL	BL	IN	PBBs:N.D. PBDEs:N.D.	PASS
17	Black substrate (integrated	BL	BL	BL	BL	BL	--	PASS

This report is issued according to the general clauses in www.ptc-testing.com by PTC. Responsibility, guarantee and law restriction are defined in the general service clauses. The report is only responsible for the submitted sample(s) except as otherwise noted. The report could not be copied without permission of the company.

Precise Testing & Certification (Guangdong) Co., Ltd. (PTC)

Building 1, No. 6, Tongxin Road, Dongcheng Street, Dongguan, Guangdong, China

Tel: 86-769-38808222

Fax: 86-769-38826111

[http:// www.ptc-testing.com](http://www.ptc-testing.com)



Test Report

Report No.: PTC25070304202C-EN01

Issue Date: Aug. 11, 2025

Page3 of 10

No.	Materials Description	EDXRF Result(s) (mg/kg)					Chemical Result (mg/kg)	Conclusion
		Pb	Cd	Hg	Cr	Br		
	circuit, main PCB)							
18	Black plastic (camera lens cover)	BL	BL	BL	BL	BL	--	PASS

- Note:**
1. mg/kg = milligram per kilogram (ppm).
 2. N.D. = Not Detected
 3. The sample is positive for Cr⁶⁺ if the Cr⁶⁺ concentration is greater than 0.13µg/cm². The sample coating is considered to contain Cr⁶⁺.
 4. The sample is negative for Cr⁶⁺ if the Cr⁶⁺ concentration is less than 0.10µg/cm². The sample is considered a non-Cr(VI) based coating.
 5. The result of Cr⁶⁺ between 0.10 µg/cm² and 0.13µg/cm² is considered to be inconclusive - unavoidable coating variations may influence the determination.
 6. The result are obtained by EDXRF for primary screening, if the result exceeds the below limit (BL), and further chemical testing.
 7. For EDXRF screening, the result(s) of Cr VI was (were) reported as total chromium and the result(s) of PBBs and PBDEs was (were) reported as total bromine.

Screening limits in mg/kg for regulated elements in various matrices

Elements	Polymer	Metal	Composite Materials
Pb	BL≤(700-3σ)<X<(1300+3σ)≤ OL	BL≤(700-3σ)<X<(1300+3σ)≤ OL	BL≤(500-3σ)<X<(1500+3σ)≤ OL
Cd	BL≤(70-3σ)<X<(130+3σ)≤ OL	BL≤(70-3σ)<X<(130+3σ)≤ OL	LOD<X<(150+3σ)≤OL
Hg	BL≤(700-3σ)<X<(1300+3σ)≤ OL	BL≤(700-3σ)<X<(1300+3σ)≤ OL	BL≤(500-3σ)<X<(1500+3σ)≤ OL
Cr	BL≤(700-3σ)<X	BL≤(700-3σ)<X	BL≤(500-3σ)<X
Br	BL≤(300-3σ)<X	--	BL≤(250-3σ)<X

BL = Below Limit, OL = Over Limit, IN = Inconclusive, LOD = Limit of Detection

This report is issued according to the general clauses in www.ptc-testing.com by PTC. Responsibility, guarantee and law restriction are defined in the general service clauses. The report is only responsible for the submitted sample(s) except as otherwise noted.
The report could not be copied without permission of the company.

Precise Testing & Certification (Guangdong) Co., Ltd. (PTC)

Building 1, No. 6, Tongxin Road, Dongcheng Street, Dongguan, Guangdong, China

Tel: 86-769-38808222

Fax: 86-769-38826111

[http:// www.ptc-testing.com](http://www.ptc-testing.com)



Test Report

Report No.: PTC25070304202C-EN01

Issue Date: Aug. 11, 2025

Page4 of 10

Chemical Testing - Detection Limit & 2011/65/EU Limit:

Name of Chemicals	Method Detection Limit (mg/kg)	2011/65/EU Limit (mg/kg)
Lead (Pb)	5	1000
Cadmium (Cd)	5	100
Mercury (Hg)	5	1000
Chromium VI (Cr VI)	Non-metal: 5 Metal: Negative	Non-metal: 1000 Metal: Negative
Polybromobiphenyls (PBBs) -Bromobiphenyl (MonoBB) -Dibromobiphenyl (DiBB) -Tribromobiphenyl (TriBB) -Tetrabromobiphenyl (TetraBB) -Pentabromobiphenyl (PentaBB) -Hexabromobiphenyl (HexaBB) -Heptabromobiphenyl (HeptaBB) -Octabromobiphenyl (OctaBB) -Nonabromobiphenyl (NonaBB) -Decabromobiphenyl (DecaBB)	Each 5	Sum: 1 000
Polybromodiphenyl ethers (PBDEs) -Bromodiphenyl ether (MonoBDE) -Dibromodiphenyl ether (DiBDE) -Tribromodiphenyl ether (TriBDE) -Tetrabromodiphenyl ether (TetraBDE) -Pentabromodiphenyl ether (PentaBDE) -Hexabromodiphenyl ether (HexaBDE) -Heptabromodiphenyl ether (HeptaBDE) -Octabromodiphenyl ether (OctaBDE) -Nonabromodiphenyl ether (NonaBDE) -Decabromodiphenyl ether (DecaBDE)	Each 5	Sum: 1 000

This report is issued according to the general clauses in www.ptc-testing.com by PTC. Responsibility, guarantee and law restriction are defined in the general service clauses. The report is only responsible for the submitted sample(s) except as otherwise noted.
The report could not be copied without permission of the company.

Precise Testing & Certification (Guangdong) Co., Ltd. (PTC)

Building 1, No. 6, Tongxin Road, Dongcheng Street, Dongguan, Guangdong, China

Tel: 86-769-38808222

Fax: 86-769-38826111

[http:// www.ptc-testing.com](http://www.ptc-testing.com)



Test Report

Report No.: PTC25070304202C-EN01

Issue Date: Aug. 11, 2025

Page5 of 10

Test Result(s):

1.2) RoHS Directive 2011/65/EU and its subsequent amendments regulation EU No.2015/863 - (Phthalates DIBP,DBP, BBP, DEHP)

Method: IEC 62321-8: 2017, analyzed by Gas Chromatograph-Mass Spectrometry (GC-MS).

Substances	DBP	BBP	DEHP	DIBP	Conclusion
CAS No.	84-74-2	85-68-7	117-81-7	84-69-5	
Limit(s) (mg/kg)	1000	1000	1000	1000	
MDL (mg/kg)	50	50	50	50	
Material No.	Result (mg/kg)				
2+4+5	N.D.	N.D.	N.D.	N.D.	PASS
6+7+18	N.D.	N.D.	N.D.	N.D.	PASS
11+12	N.D.	N.D.	N.D.	N.D.	PASS
16	N.D.	N.D.	N.D.	N.D.	PASS
9+8+10	N.D.	N.D.	N.D.	N.D.	PASS
3+17	N.D.	N.D.	N.D.	N.D.	PASS

- Note:**
1. mg/kg = milligram per kilogram (ppm).
 2. N.D. = Not Detected (< MDL).
 3. MDL = Method Detection Limit.

This report is issued according to the general clauses in www.ptc-testing.com by PTC. Responsibility, guarantee and law restriction are defined in the general service clauses. The report is only responsible for the submitted sample(s) except as otherwise noted.
The report could not be copied without permission of the company.

Precise Testing & Certification (Guangdong) Co., Ltd. (PTC)

Building 1, No. 6, Tongxin Road, Dongcheng Street, Dongguan, Guangdong, China

Tel: 86-769-38808222

Fax: 86-769-38826111

[http:// www.ptc-testing.com](http://www.ptc-testing.com)



Test Report

Report No.: PTC25070304202C-EN01

Issue Date: Aug. 11, 2025

Page6 of 10

Test Material List

The following materials apply only to the samples submitted for phthalates testing.

Material No.	Description (Location)
2	Black plastic (body shell)
3	Silver plastic with black printing / adhesive (label)
4	Black plastic (button)
5	Black plastic (keypad pad)
6	Transparent plastic with black coating (label)
7	Blue soft plastic (gasket)
8	Black fabric adhesive (adhesive tape)
9	Black fiber with adhesive (dust cover)
10	White plastic (plug, audio cable)
11	Black plastic (wire jacket, audio cable)
12	Red plastic (wire jacket audio cable)
16	Green PCB (main PCB)
17	Black substrate (integrated circuit, main PCB)
18	Black plastic (camera lens cover)

This report is issued according to the general clauses in www.ptc-testing.com by PTC. Responsibility, guarantee and law restriction are defined in the general service clauses. The report is only responsible for the submitted sample(s) except as otherwise noted.
The report could not be copied without permission of the company.

Precise Testing & Certification (Guangdong) Co., Ltd. (PTC)

Building 1, No. 6, Tongxin Road, Dongcheng Street, Dongguan, Guangdong, China

Tel: 86-769-38808222

Fax: 86-769-38826111

[http:// www.ptc-testing.com](http://www.ptc-testing.com)



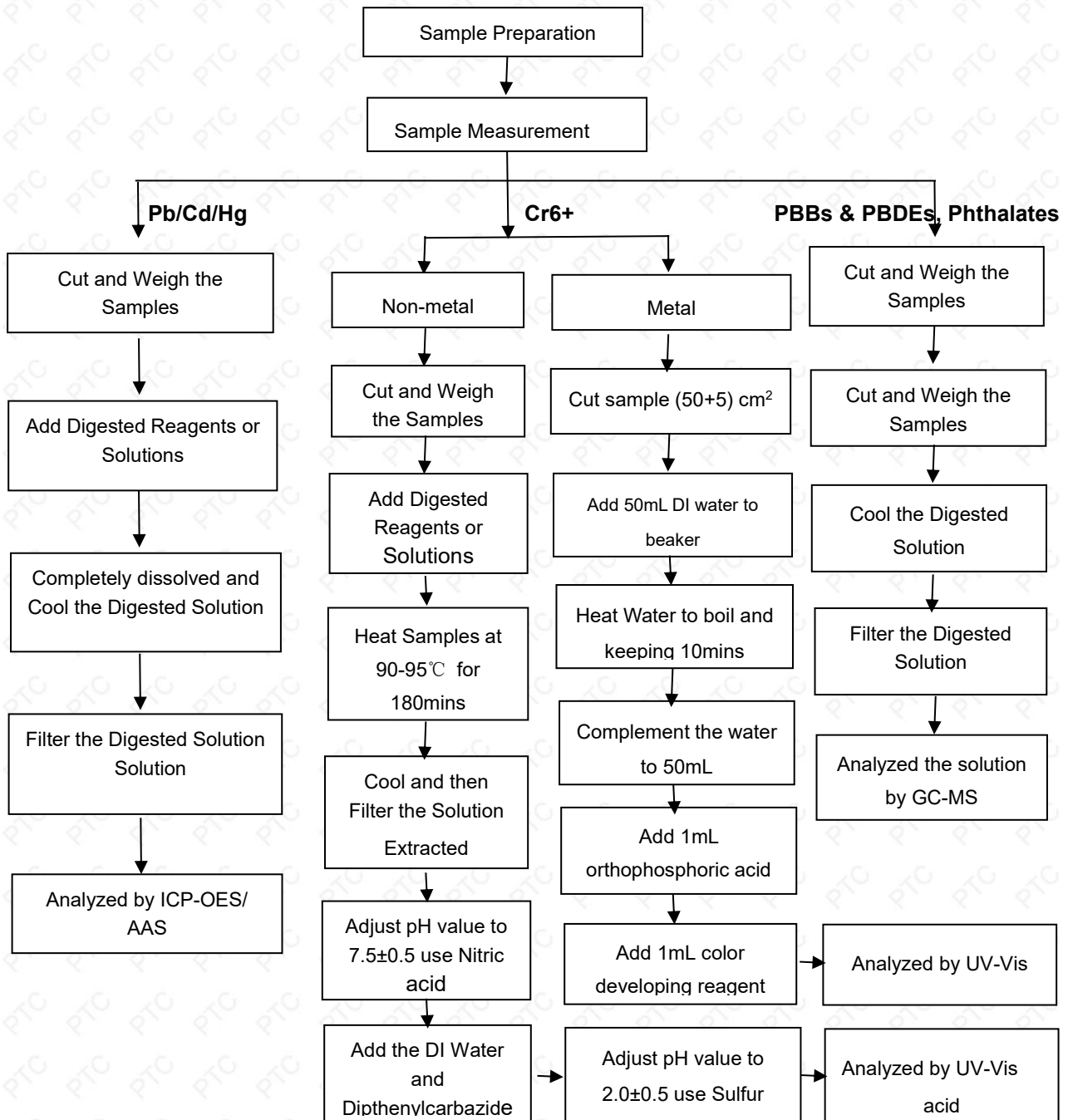
Test Report

Report No.: PTC25070304202C-EN01

Issue Date: Aug. 11, 2025

Page7 of 10

Pb/Cd/Hg/Cr6+/PBBs/PBDEs , Phthalates Testing Flow Chart



This report is issued according to the general clauses in www.ptc-testing.com by PTC. Responsibility, guarantee and law restriction are defined in the general service clauses. The report is only responsible for the submitted sample(s) except as otherwise noted. The report could not be copied without permission of the company.

Precise Testing & Certification (Guangdong) Co., Ltd. (PTC)

Building 1, No. 6, Tongxin Road, Dongcheng Street, Dongguan, Guangdong, China

Tel: 86-769-38808222

Fax: 86-769-38826111

[http:// www.ptc-testing.com](http://www.ptc-testing.com)



Test Report

Report No.: PTC25070304202C-EN01

Issue Date: Aug. 11, 2025

Page 8 of 10

Photo(s) of Sample:



This report is issued according to the general clauses in www.ptc-testing.com by PTC. Responsibility, guarantee and law restriction are defined in the general service clauses. The report is only responsible for the submitted sample(s) except as otherwise noted. The report could not be copied without permission of the company.

Precise Testing & Certification (Guangdong) Co., Ltd. (PTC)

Building 1, No. 6, Tongxin Road, Dongcheng Street, Dongguan, Guangdong, China

Tel: 86-769-38808222

Fax: 86-769-38826111

[http:// www.ptc-testing.com](http://www.ptc-testing.com)

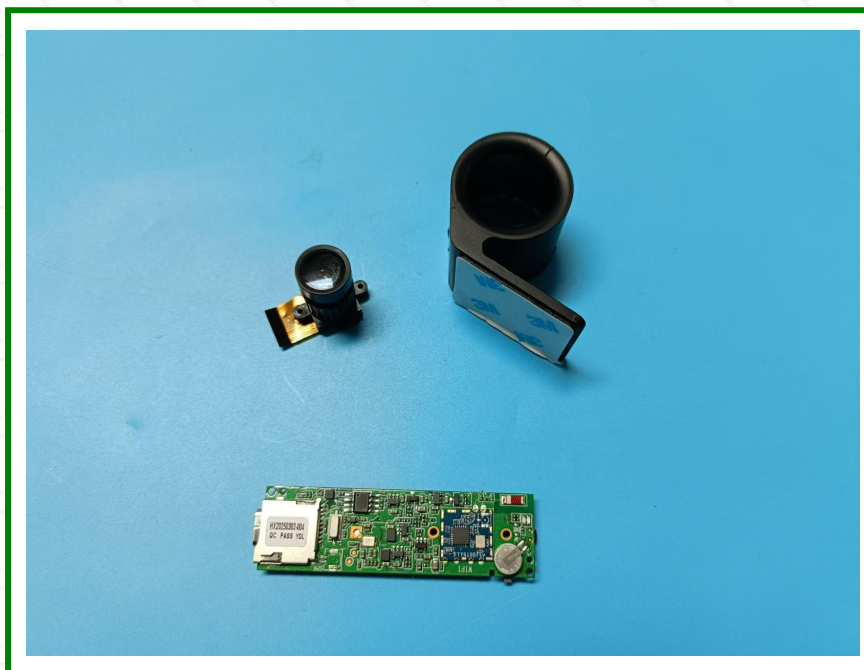
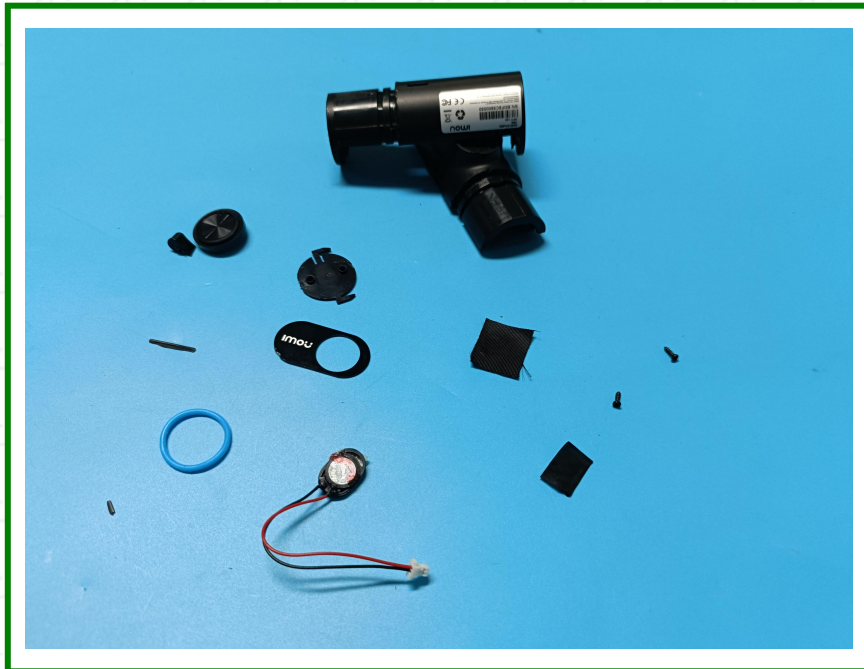


Test Report

Report No.: PTC25070304202C-EN01

Issue Date: Aug. 11, 2025

Page9 of 10



This report is issued according to the general clauses in www.ptc-testing.com by PTC. Responsibility, guarantee and law restriction are defined in the general service clauses. The report is only responsible for the submitted sample(s) except as otherwise noted. The report could not be copied without permission of the company.

Precise Testing & Certification (Guangdong) Co., Ltd. (PTC)

Building 1, No. 6, Tongxin Road, Dongcheng Street, Dongguan, Guangdong, China
Tel: 86-769-38808222 Fax: 86-769-38826111 [http:// www.ptc-testing.com](http://www.ptc-testing.com)

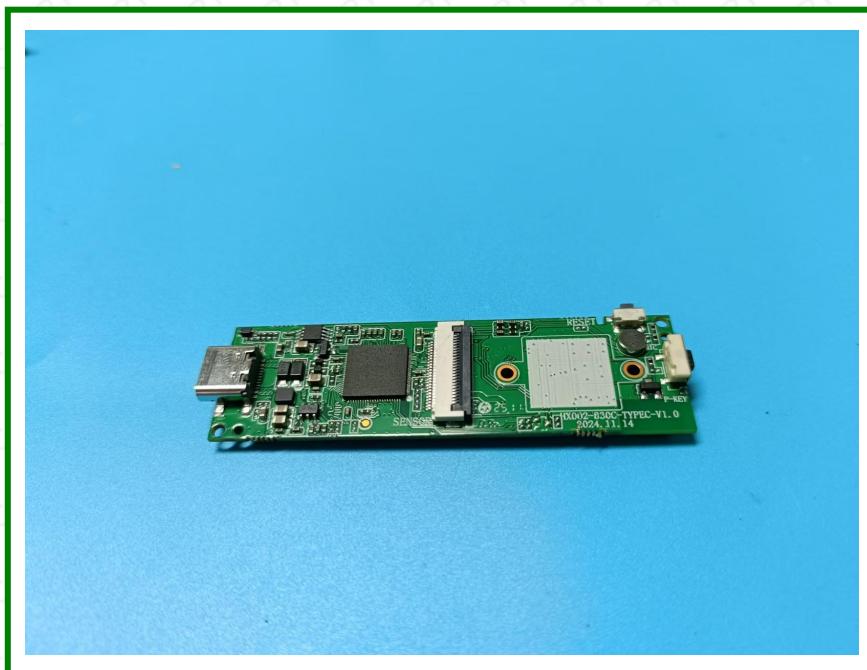


Test Report

Report No.: PTC25070304202C-EN01

Issue Date: Aug. 11, 2025

Page 10 of 10



End of Report

This report is issued according to the general clauses in www.ptc-testing.com by PTC. Responsibility, guarantee and law restriction are defined in the general service clauses. The report is only responsible for the submitted sample(s) except as otherwise noted. The report could not be copied without permission of the company.

Precise Testing & Certification (Guangdong) Co., Ltd. (PTC)

Building 1, No. 6, Tongxin Road, Dongcheng Street, Dongguan, Guangdong, China

Tel: 86-769-38808222

Fax: 86-769-38826111

[http:// www.ptc-testing.com](http://www.ptc-testing.com)